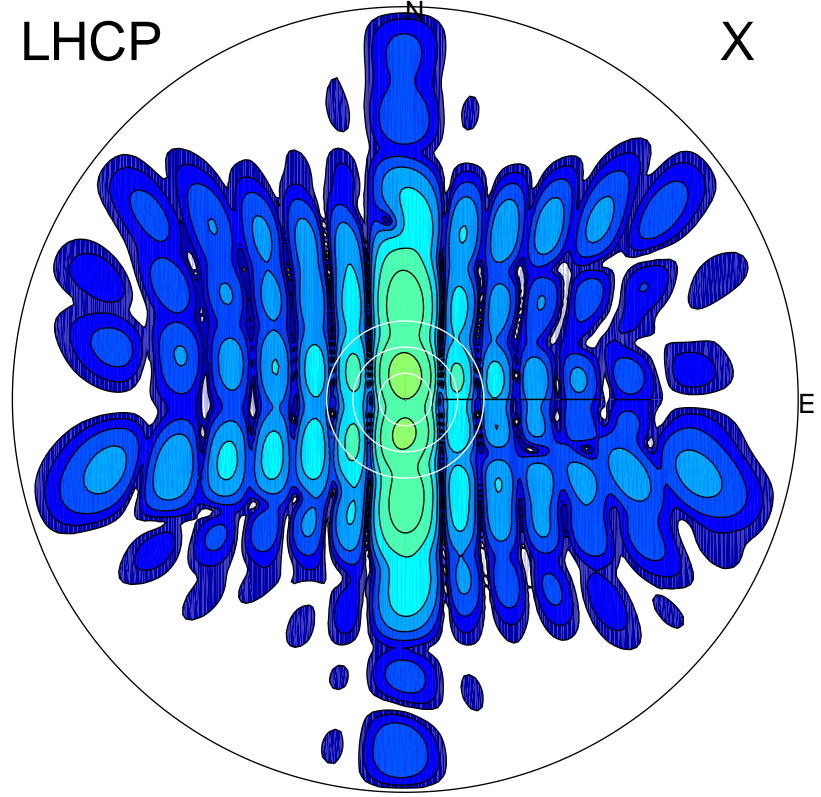


2015-10-31 14:23:05 A1 5.47000000 MHz 655.0 kW

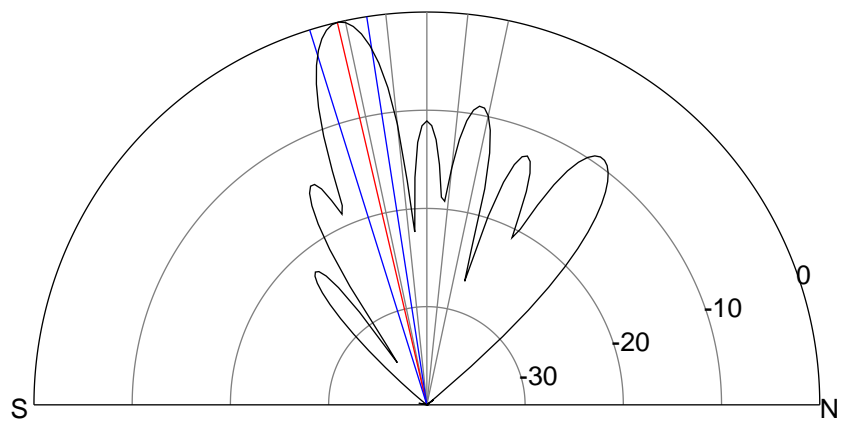
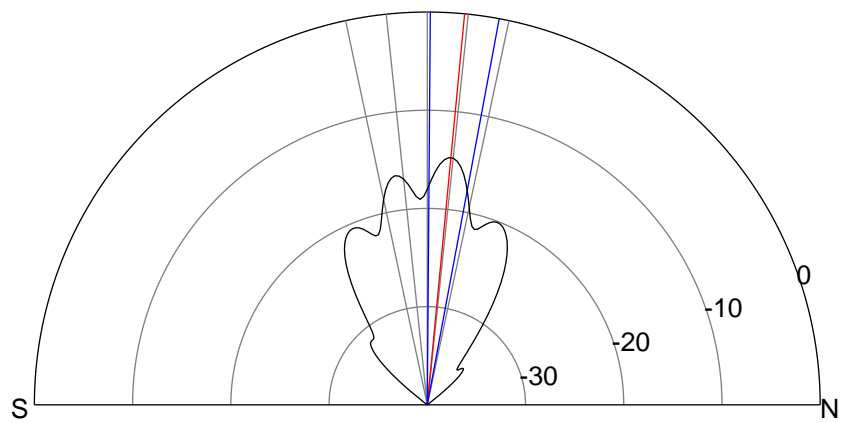
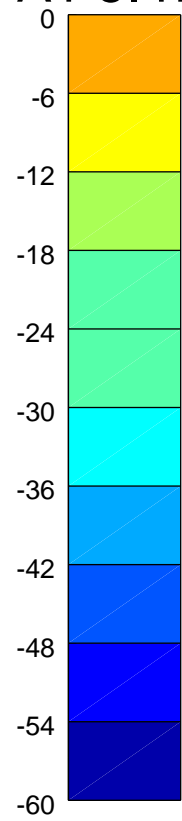
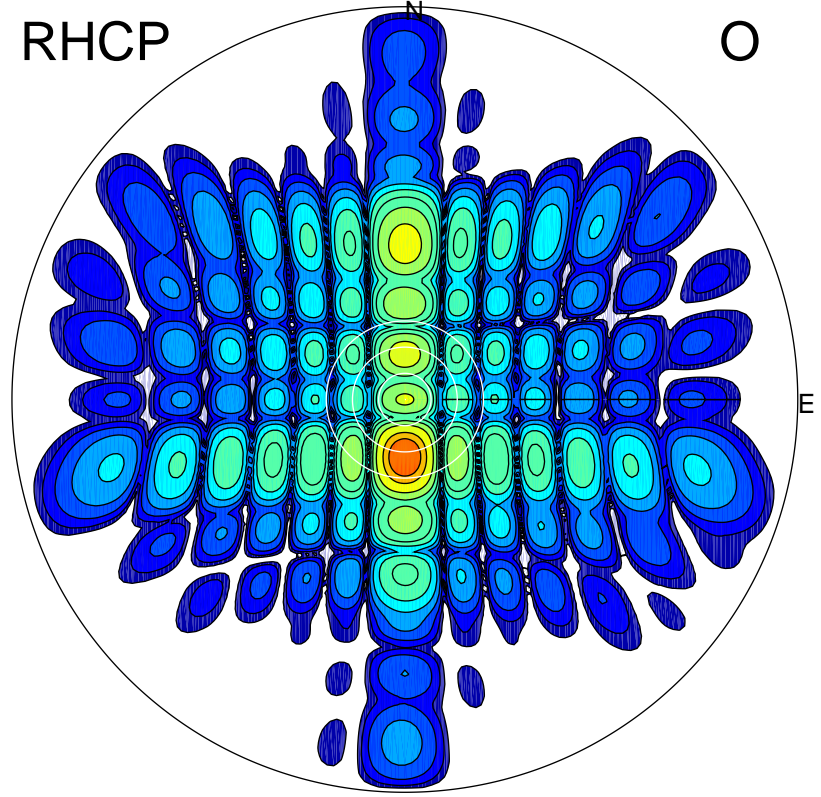
LHCP

X



RHCP

O



ERP 9.0 MW

Peak gain 11.4 dBi at Az 359 Zen 5
RHCP gain 6.9 dBi
N-S peak 11.4 dBi at Zen 5.5
N-S -3 dB beamwidth 10.1 deg.

ERP 266.9 MW

Peak gain 26.1 dBi at Az 180 Zen 13
LHCP gain 6.5 dBi
N-S peak 26.1 dBi at Zen -13.2
N-S -3 dB beamwidth 8.5 deg.