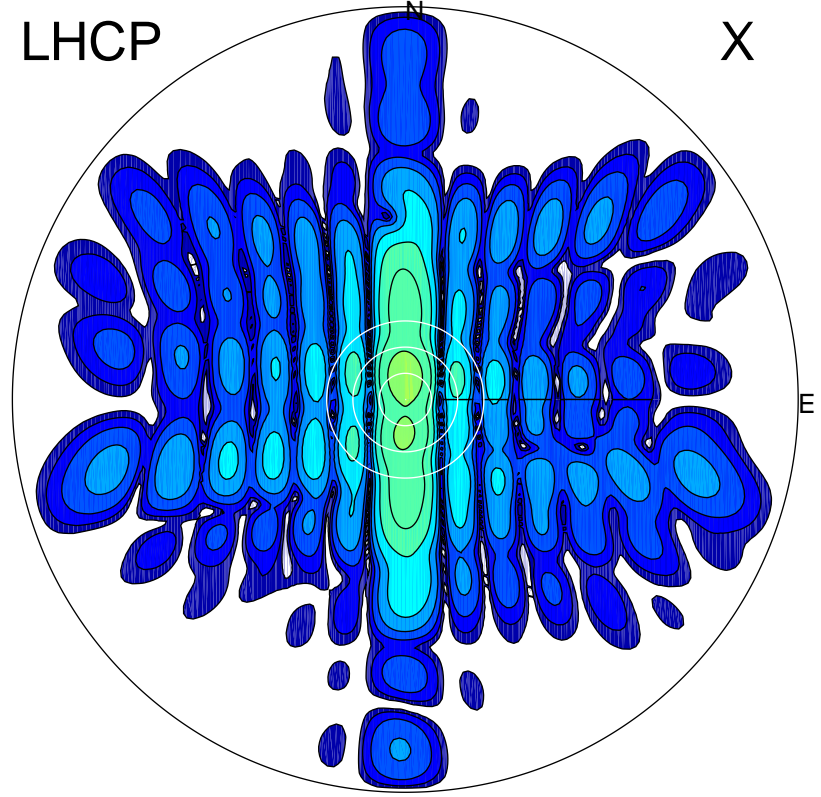


2015-10-31 14:22:25 A1 5.49000000 MHz 647.0 kW

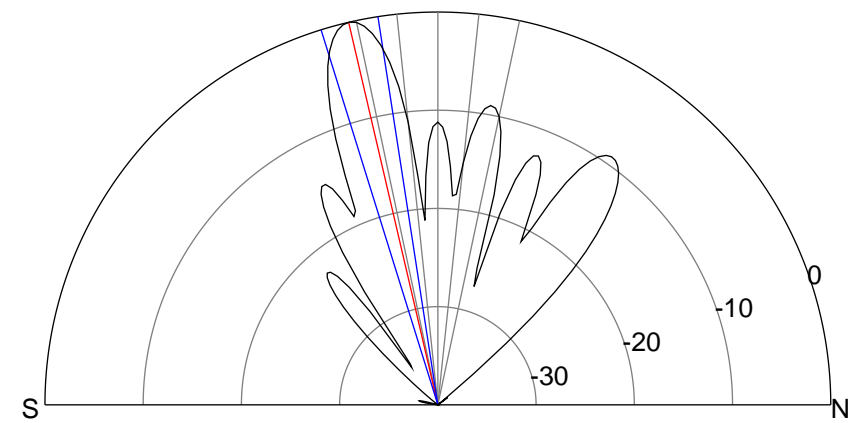
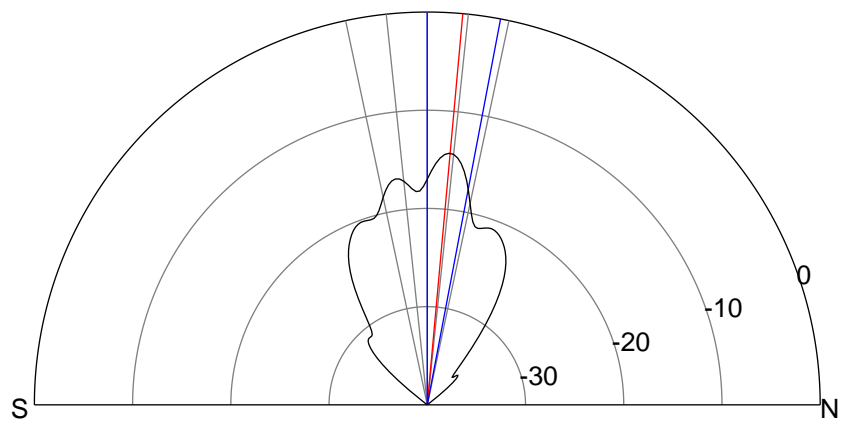
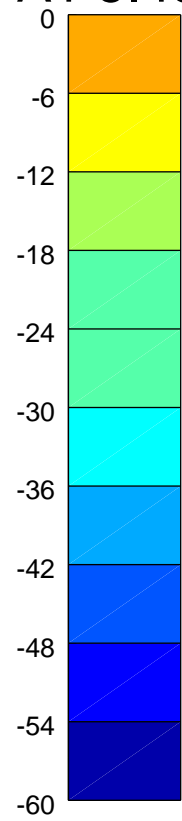
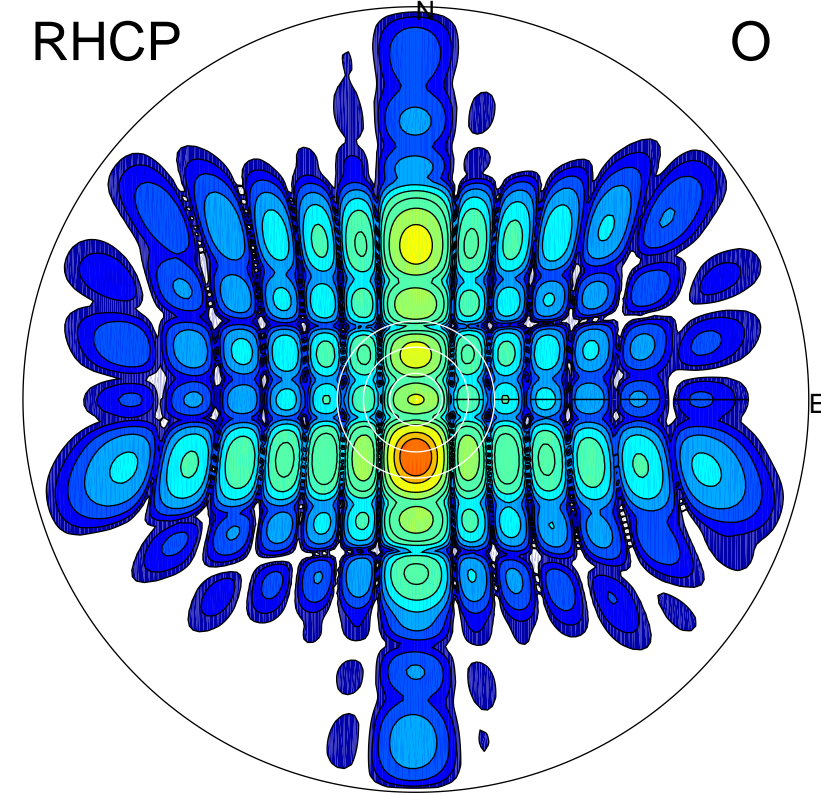
LHCP

X



RHCP

O



### ERP 9.9 MW

Peak gain 11.8 dBi at Az 358 Zen 5  
RHCP gain 7.6 dBi  
N-S peak 11.8 dBi at Zen 5.2  
N-S -3 dB beamwidth 10.8 deg.

### ERP 264.5 MW

Peak gain 26.1 dBi at Az 180 Zen 13  
LHCP gain 7.1 dBi  
N-S peak 26.1 dBi at Zen -13.1  
N-S -3 dB beamwidth 8.5 deg.