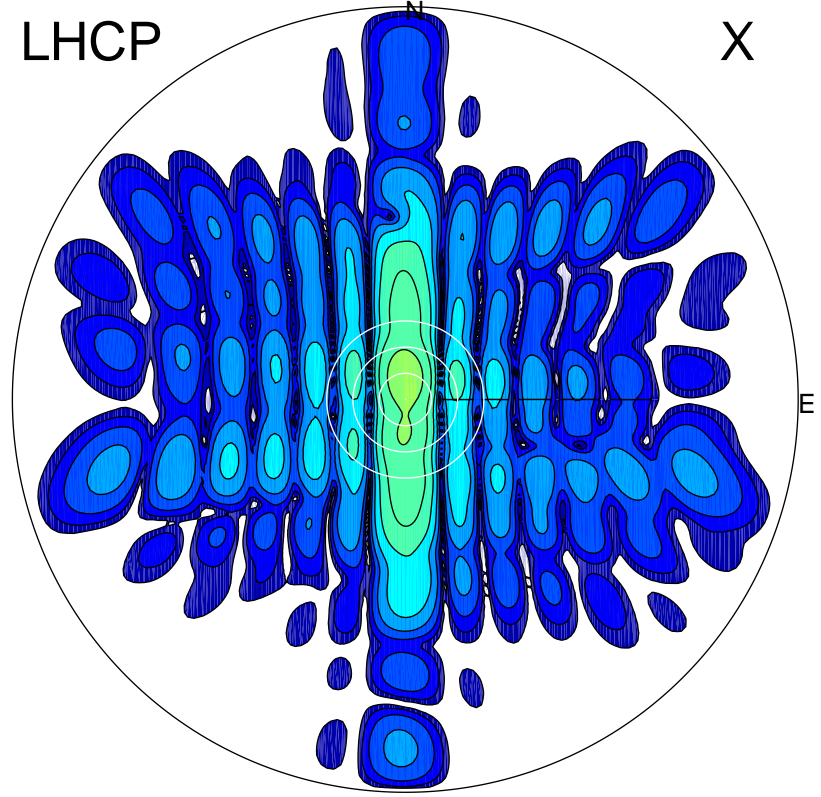


2015-10-31 14:21:45 A1 5.51000000 MHz 647.0 kW

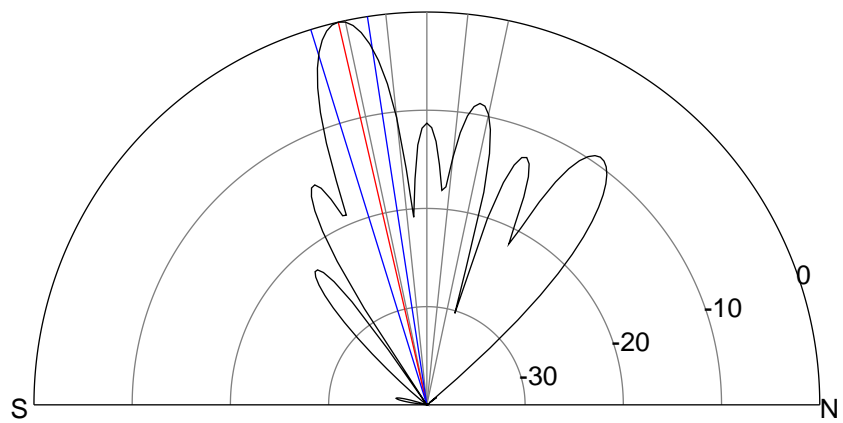
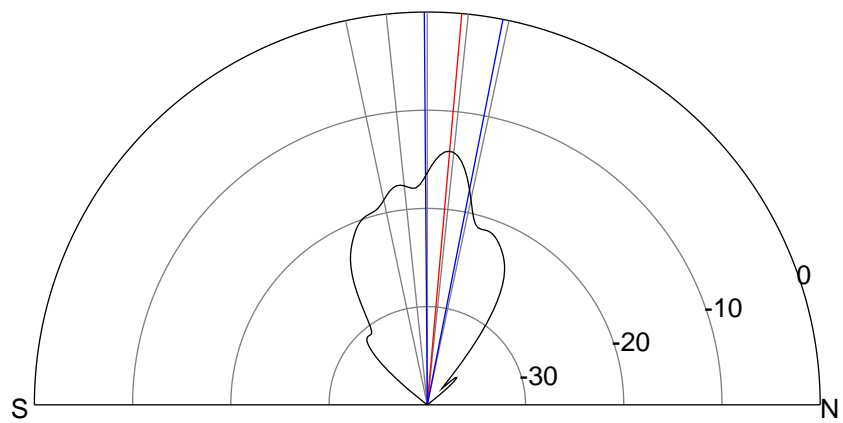
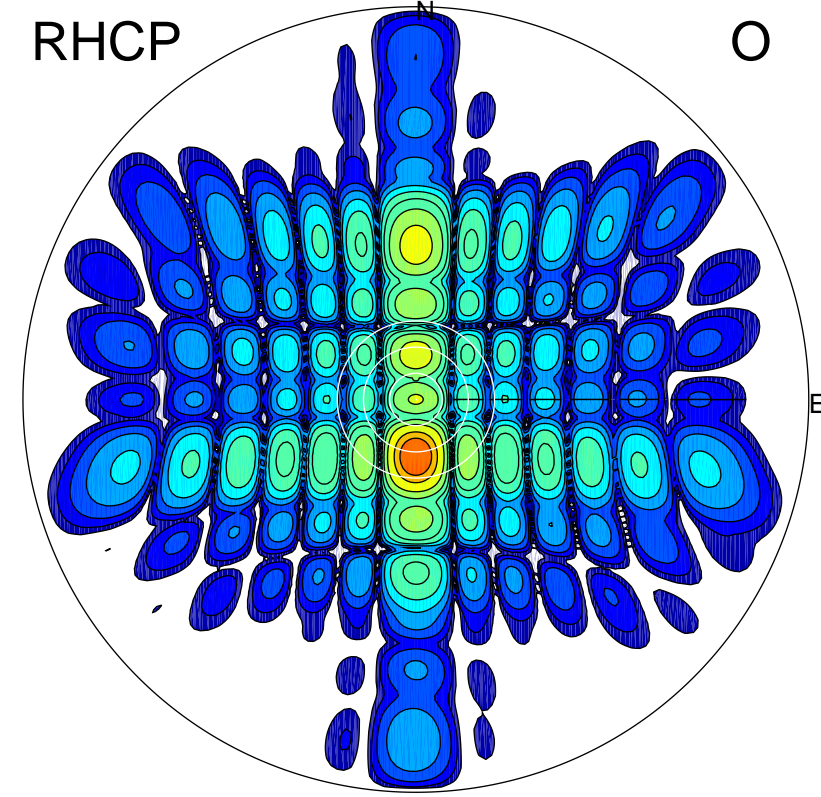
LHCP

X



RHCP

O



ERP 10.4 MW

Peak gain 12.1 dBi at Az 358 Zen 5
RHCP gain 8.4 dBi
N-S peak 12.1 dBi at Zen 5.0
N-S -3 dB beamwidth 11.5 deg.

ERP 265.8 MW

Peak gain 26.1 dBi at Az 180 Zen 13
LHCP gain 7.1 dBi
N-S peak 26.1 dBi at Zen -13.0
N-S -3 dB beamwidth 8.5 deg.