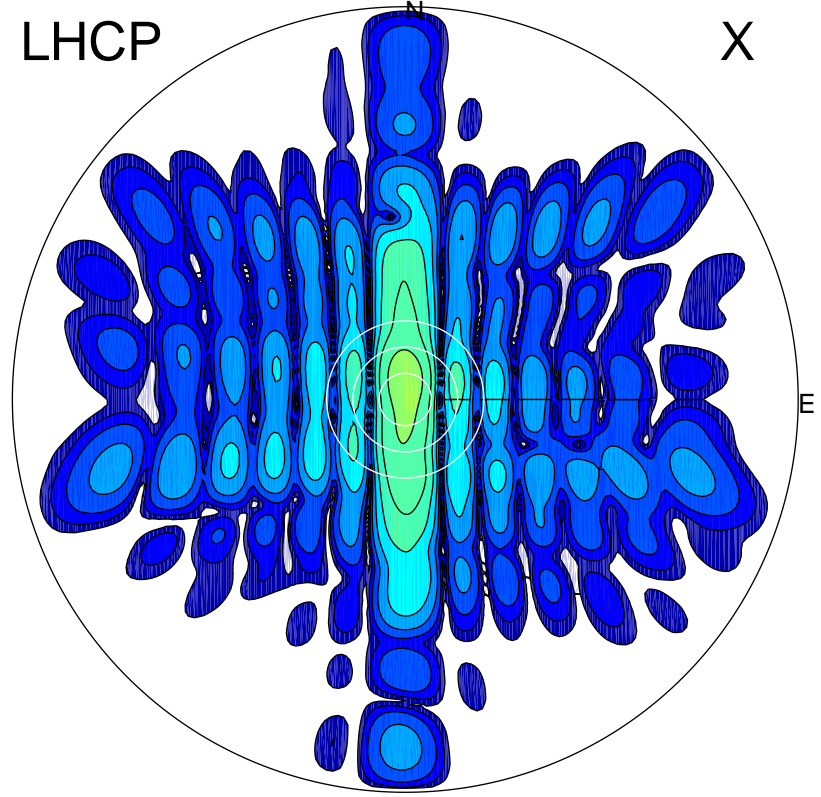


2015-10-31 14:21:05 A1 5.53000000 MHz 642.0 kW

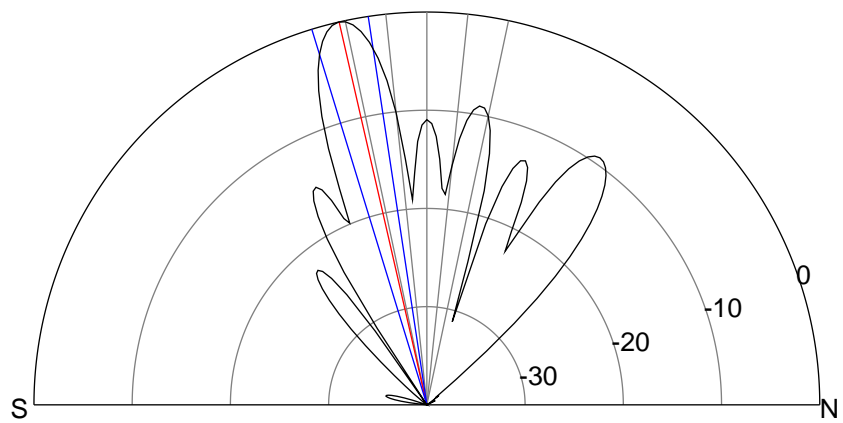
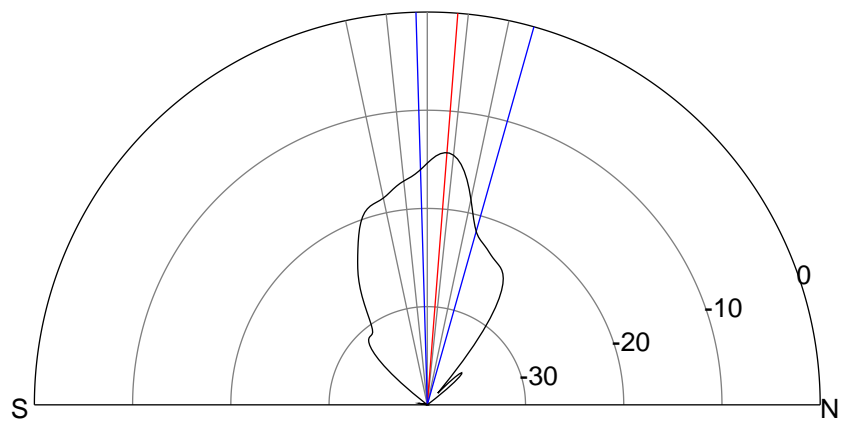
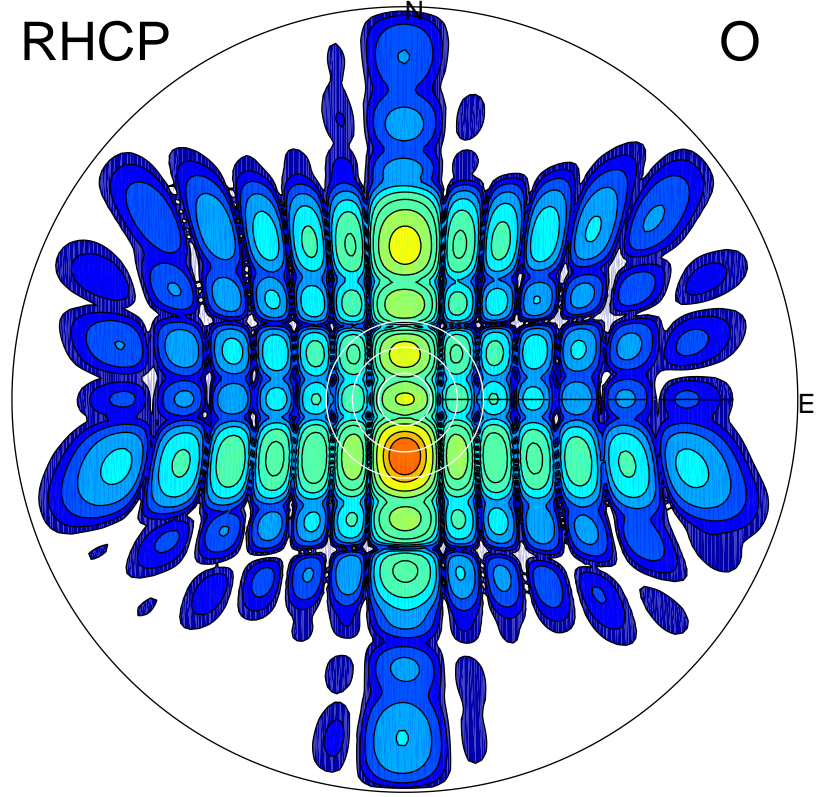
LHCP

X



RHCP

O



### ERP 10.0 MW

Peak gain 11.9 dBi at Az 0 Zen 4  
RHCP gain 8.3 dBi  
N-S peak 11.9 dBi at Zen 4.5  
N-S -3 dB beamwidth 17.4 deg.

### ERP 267.0 MW

Peak gain 26.2 dBi at Az 180 Zen 13  
LHCP gain 7.6 dBi  
N-S peak 26.2 dBi at Zen -12.9  
N-S -3 dB beamwidth 8.4 deg.