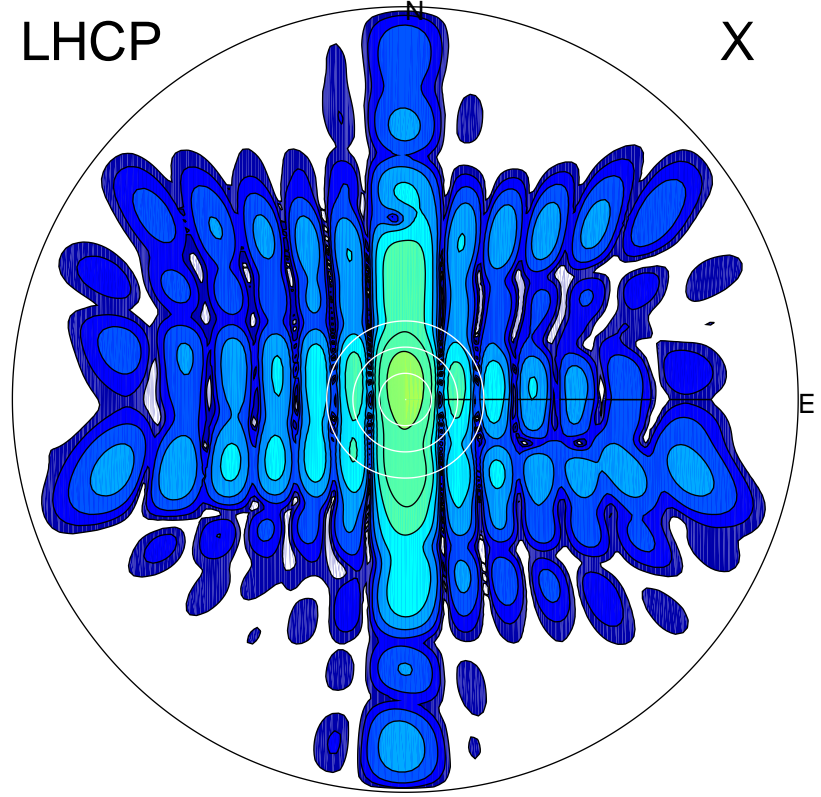


2015-10-31 14:20:25 A1 5.55000000 MHz 638.0 kW

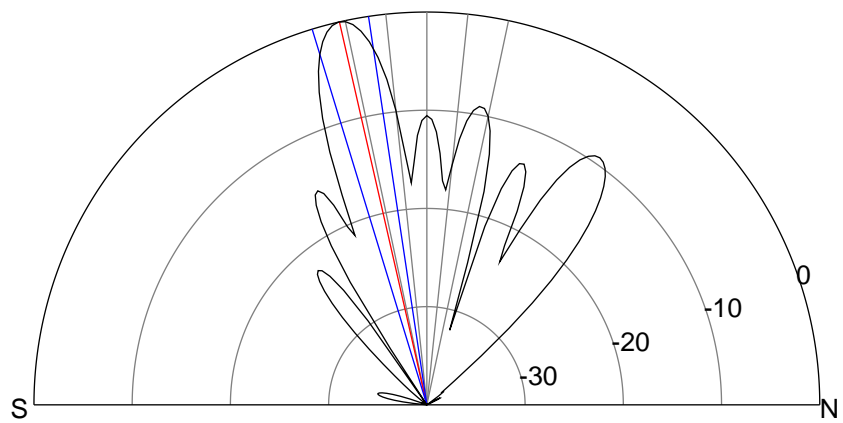
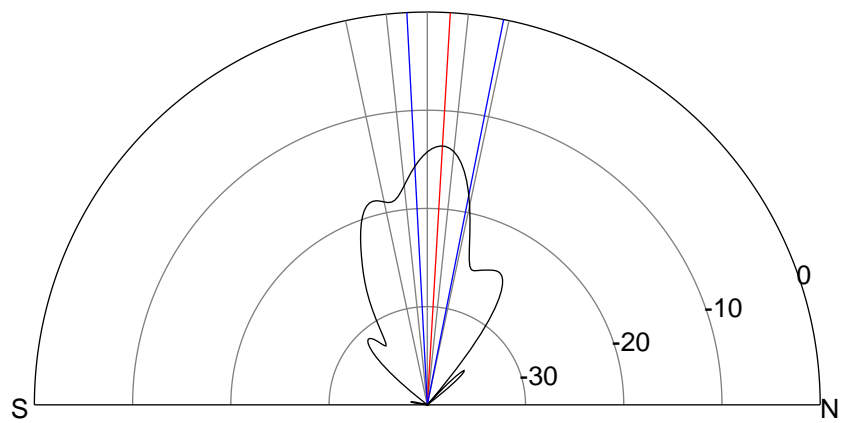
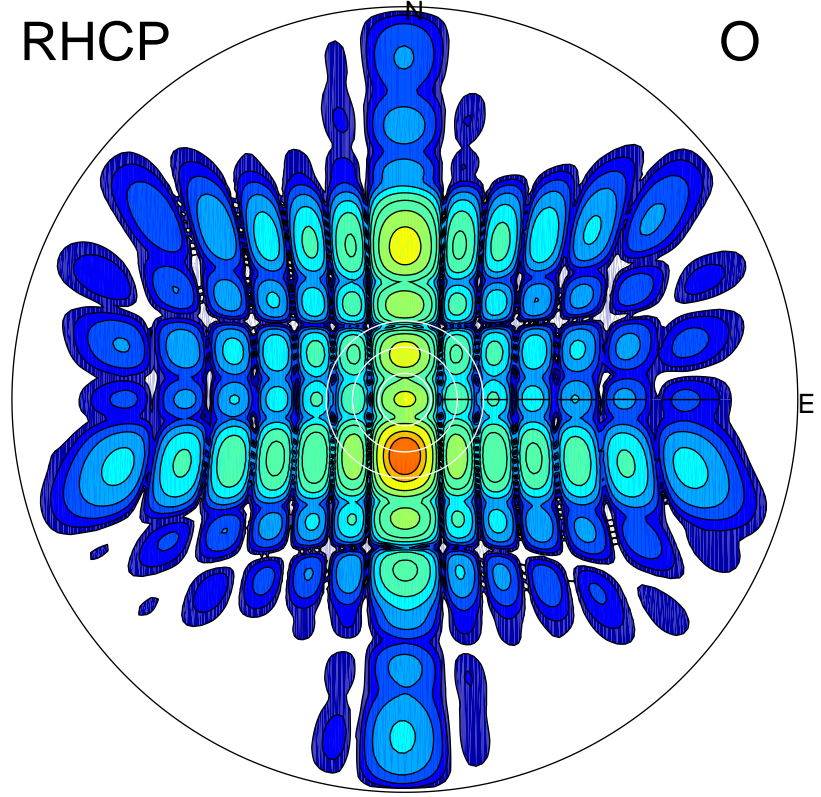
LHCP

X



RHCP

O



ERP 11.6 MW

Peak gain 12.6 dBi at Az 0 Zen 3
RHCP gain 11.9 dBi
N-S peak 12.6 dBi at Zen 3.4
N-S -3 dB beamwidth 14.2 deg.

ERP 266.6 MW

Peak gain 26.2 dBi at Az 180 Zen 13
LHCP gain 7.5 dBi
N-S peak 26.2 dBi at Zen -12.9
N-S -3 dB beamwidth 8.4 deg.