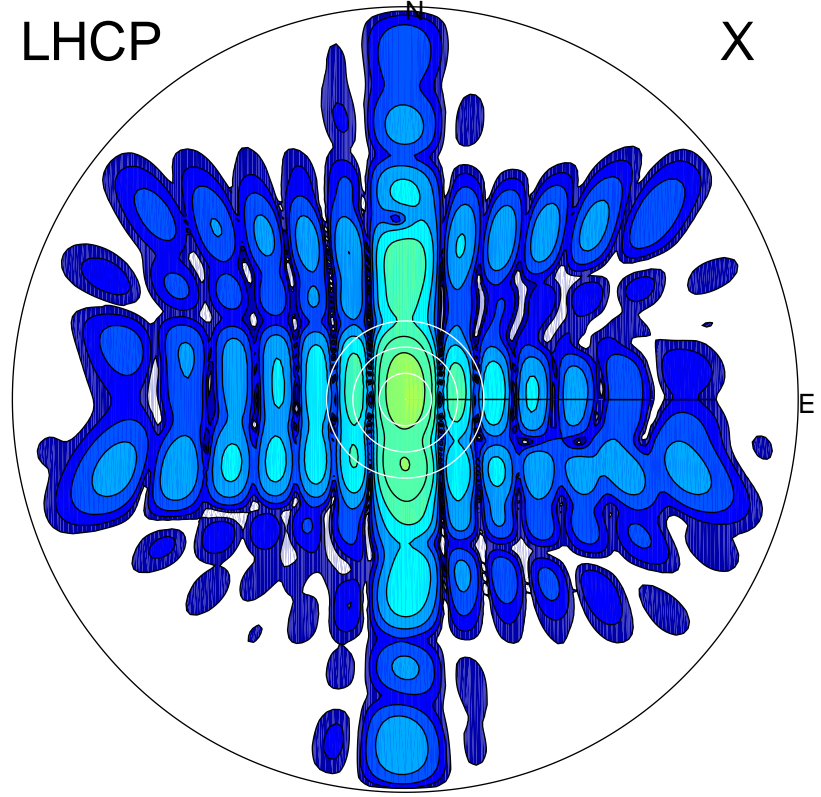


2015-10-31 14:19:45 A1 5.57000000 MHz 636.0 kW

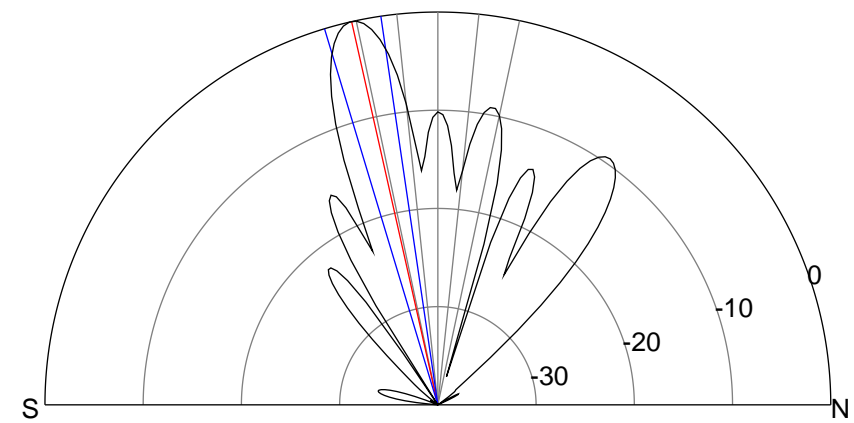
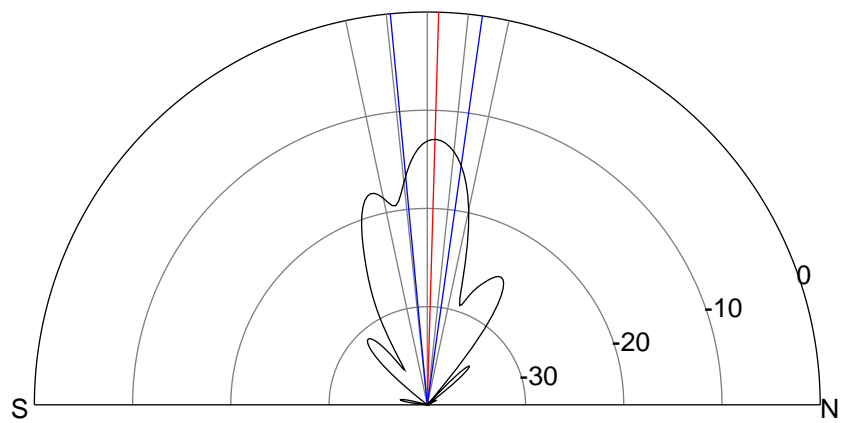
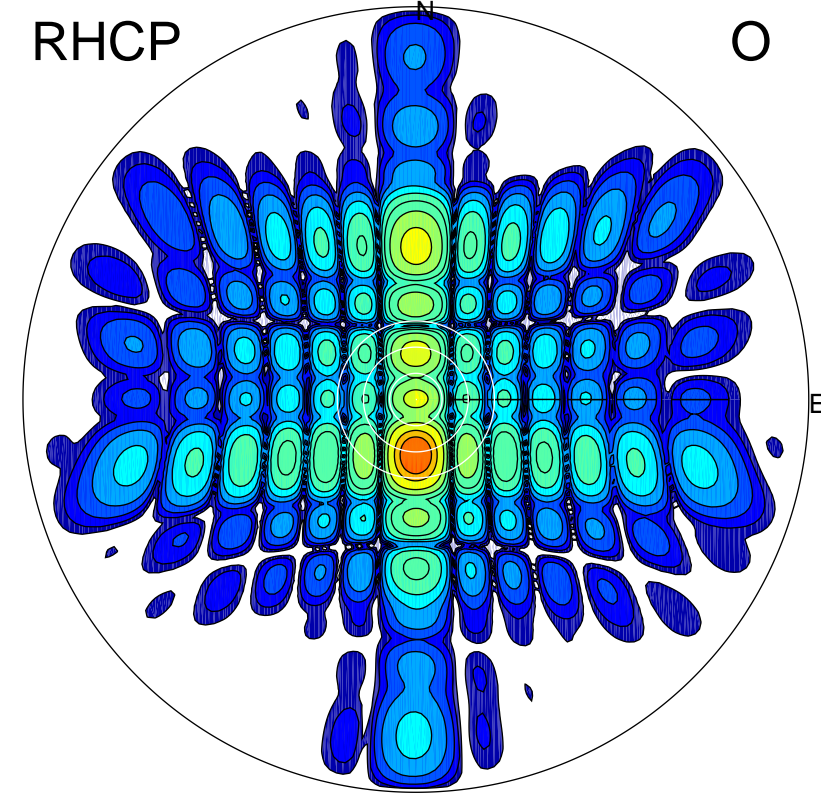
LHCP

X



RHCP

O



ERP 13.5 MW

Peak gain 13.3 dBi at Az 0 Zen 2
RHCP gain 14.7 dBi
N-S peak 13.3 dBi at Zen 1.7
N-S -3 dB beamwidth 13.5 deg.

ERP 266.4 MW

Peak gain 26.2 dBi at Az 180 Zen 13
LHCP gain 8.1 dBi
N-S peak 26.2 dBi at Zen -12.7
N-S -3 dB beamwidth 8.4 deg.