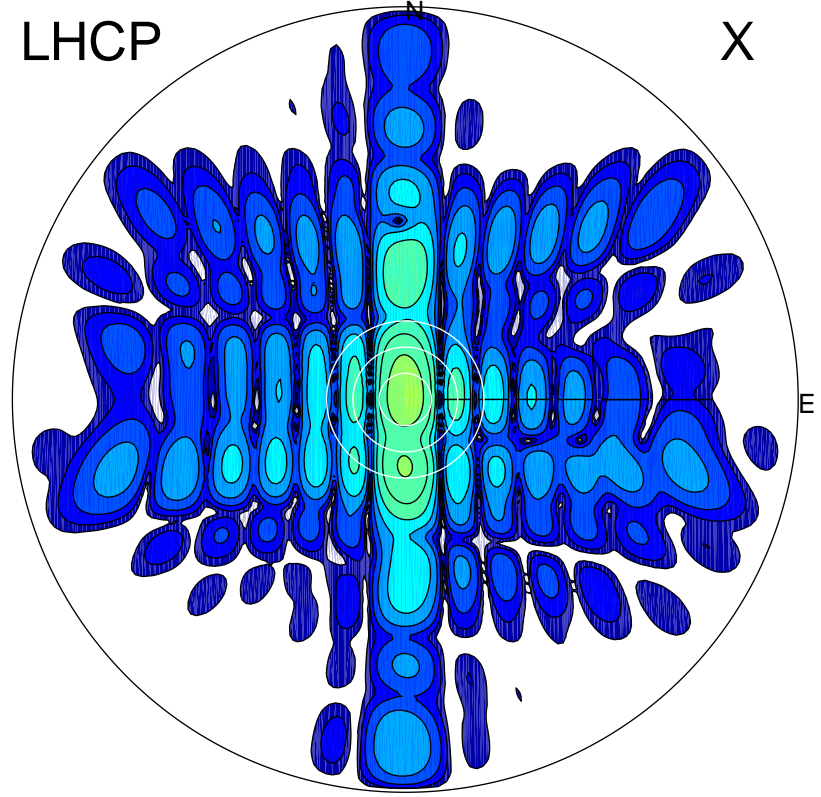


2015-10-31 14:19:05 A1 5.59000000 MHz 635.0 kW

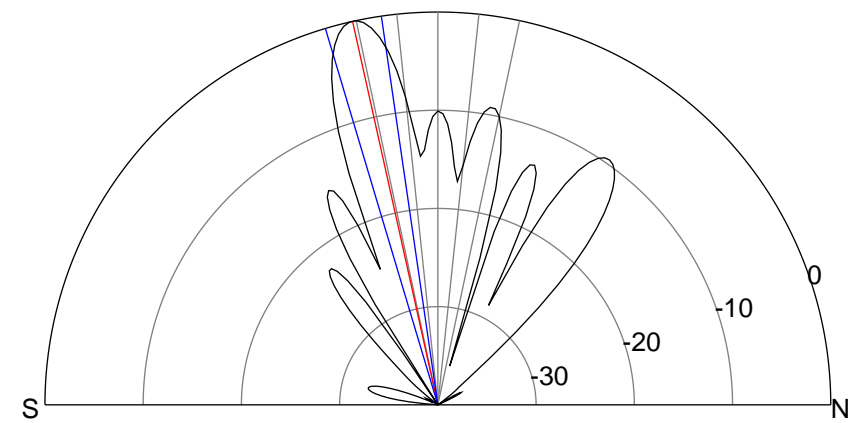
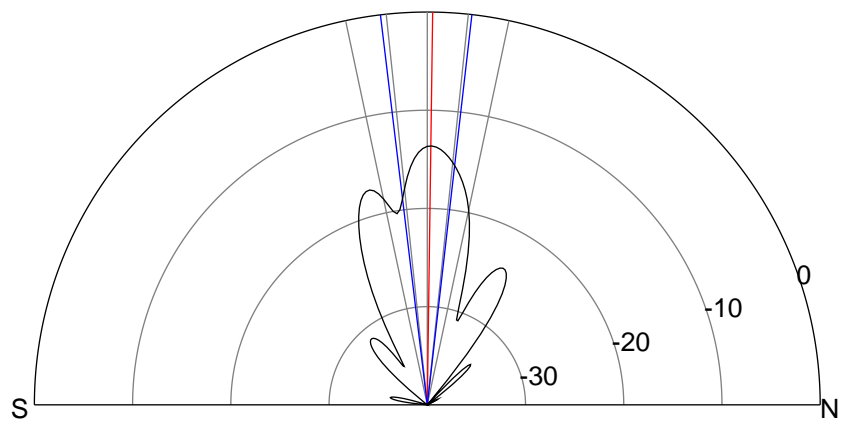
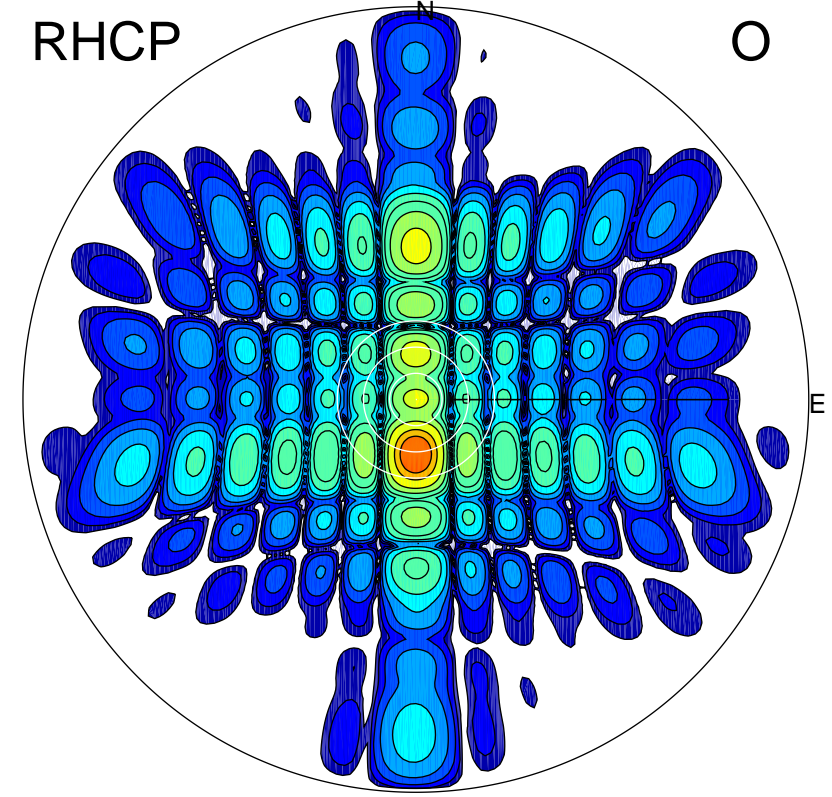
LHCP

X



RHCP

O



ERP 11.6 MW

Peak gain 12.6 dBi at Az 0 Zen 1
RHCP gain 15.9 dBi
N-S peak 12.6 dBi at Zen 0.8
N-S -3 dB beamwidth 13.4 deg.

ERP 268.3 MW

Peak gain 26.3 dBi at Az 180 Zen 13
LHCP gain 8.3 dBi
N-S peak 26.3 dBi at Zen -12.5
N-S -3 dB beamwidth 8.4 deg.