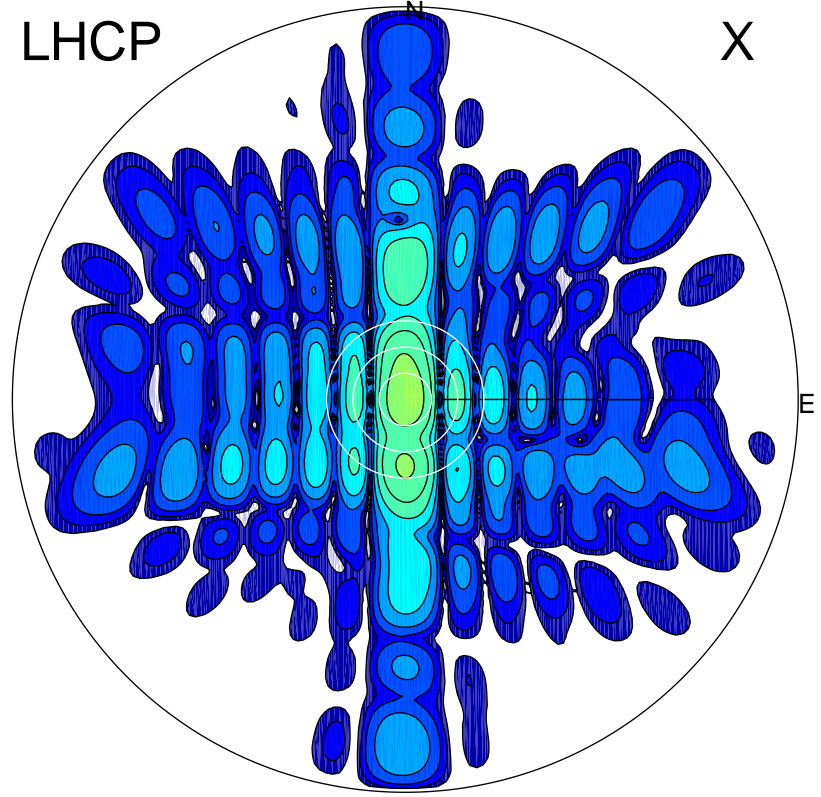


2015-10-31 14:18:25 A1 5.58000000 MHz 635.0 kW

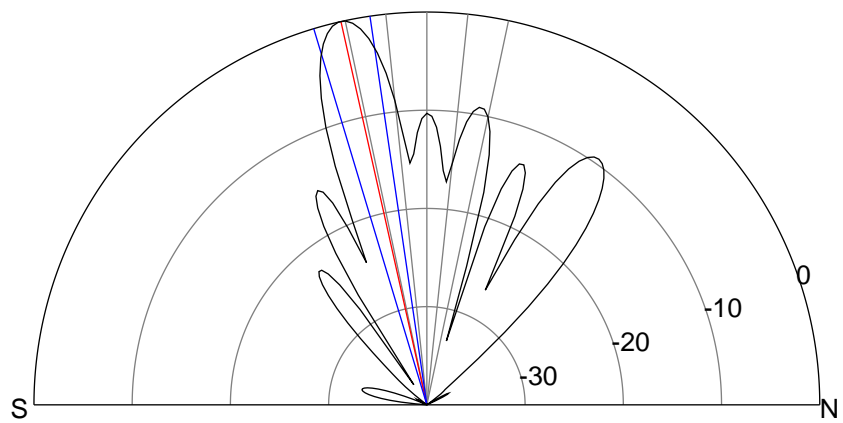
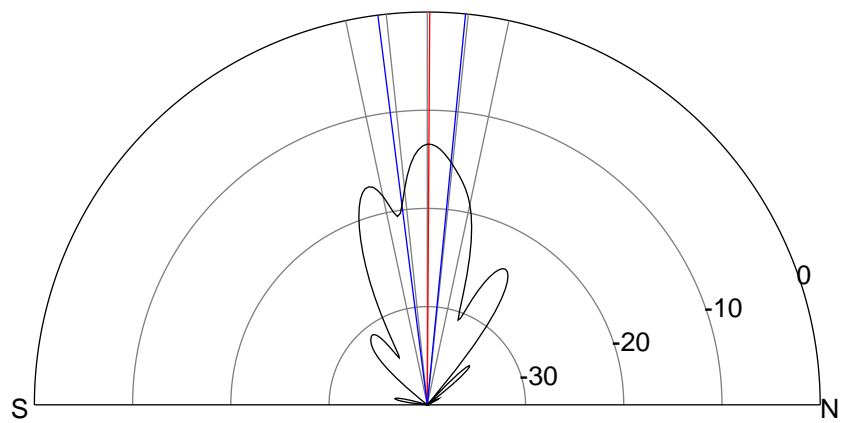
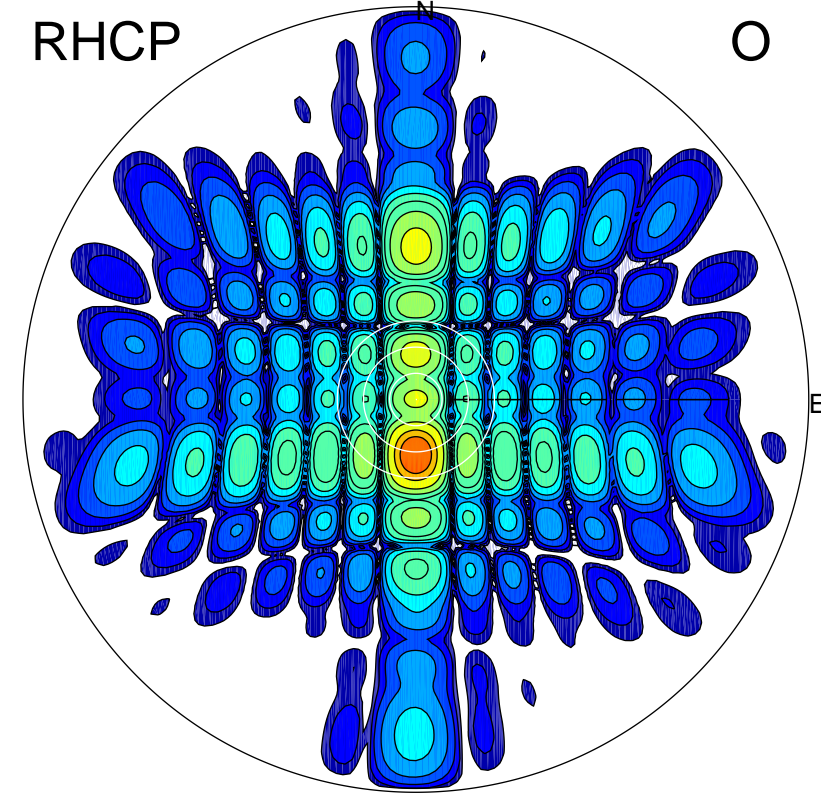
LHCP

X



RHCP

O



ERP 12.1 MW

Peak gain 12.8 dBi at Az 32 Zen 0
RHCP gain 15.9 dBi
N-S peak 12.8 dBi at Zen 0.4
N-S -3 dB beamwidth 12.8 deg.

ERP 267.4 MW

Peak gain 26.2 dBi at Az 180 Zen 13
LHCP gain 8.6 dBi
N-S peak 26.3 dBi at Zen -12.6
N-S -3 dB beamwidth 8.4 deg.