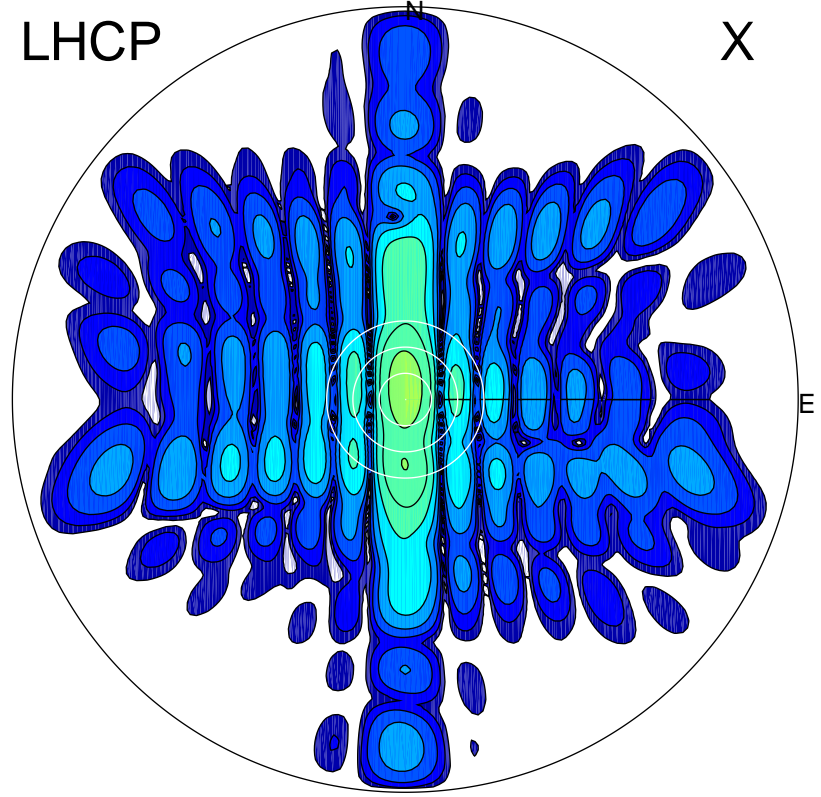


2015-10-31 14:17:05 A1 5.54000000 MHz 646.0 kW

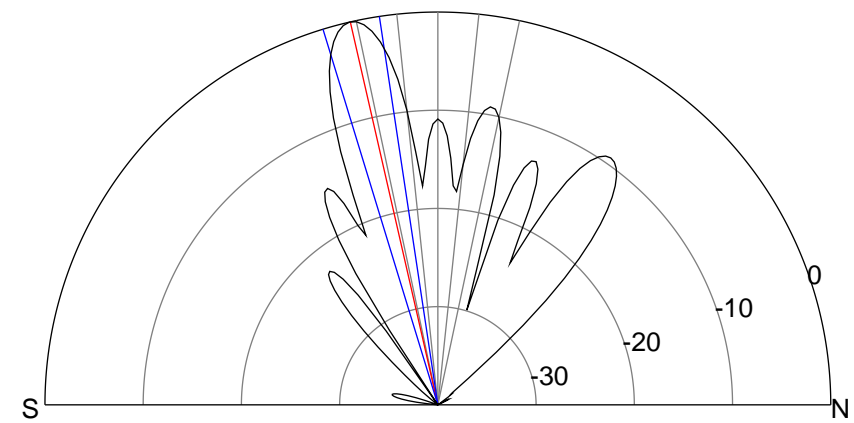
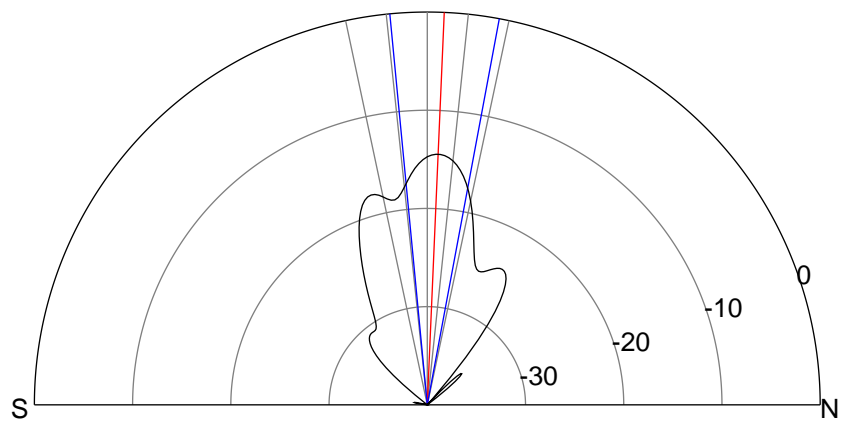
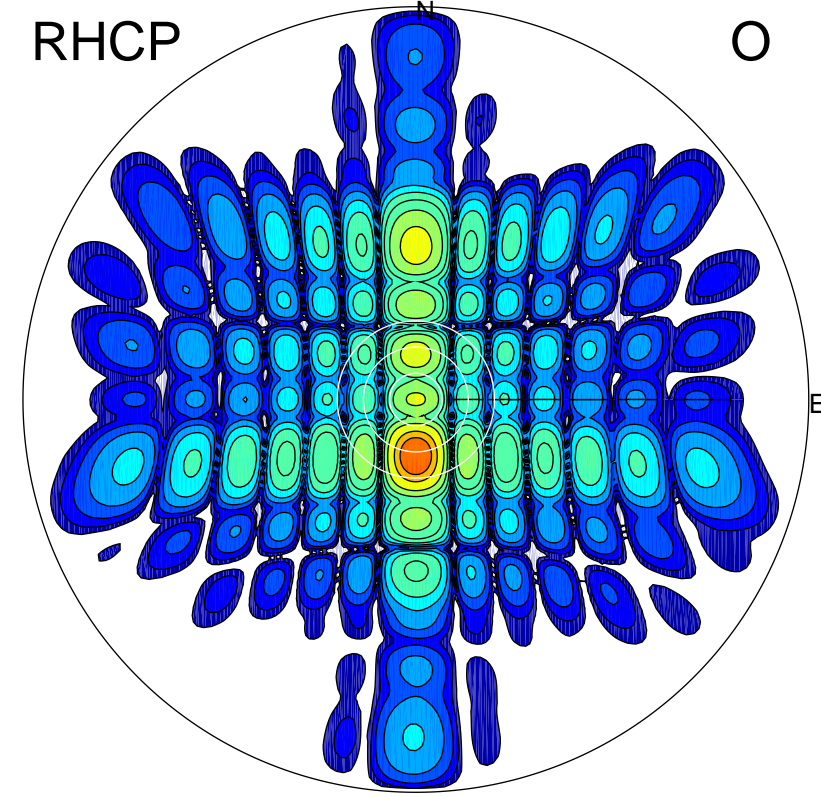
LHCP

X



RHCP

O



### ERP 9.7 MW

Peak gain 11.8 dBi at Az 1 Zen 3  
RHCP gain 11.4 dBi  
N-S peak 11.8 dBi at Zen 2.5  
N-S -3 dB beamwidth 16.0 deg.

### ERP 270.7 MW

Peak gain 26.2 dBi at Az 180 Zen 13  
LHCP gain 8.1 dBi  
N-S peak 26.2 dBi at Zen -12.9  
N-S -3 dB beamwidth 8.4 deg.