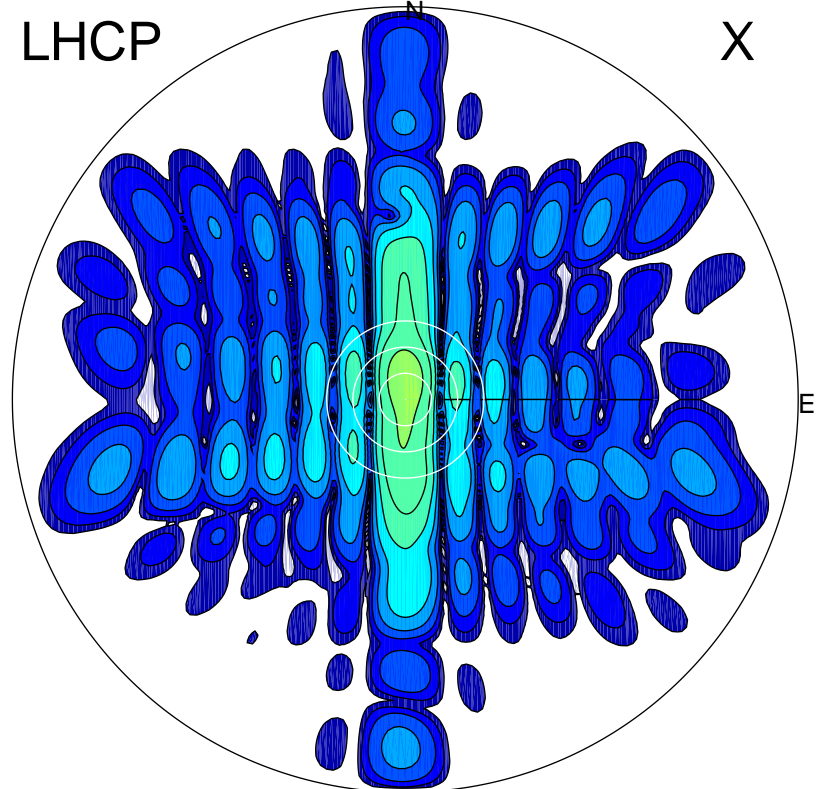


2015-10-31 14:16:25 A1 5.52000000 MHz 652.0 kW

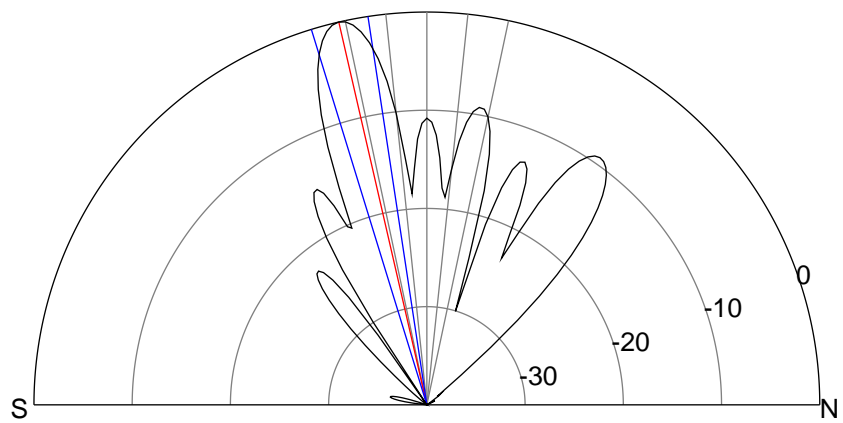
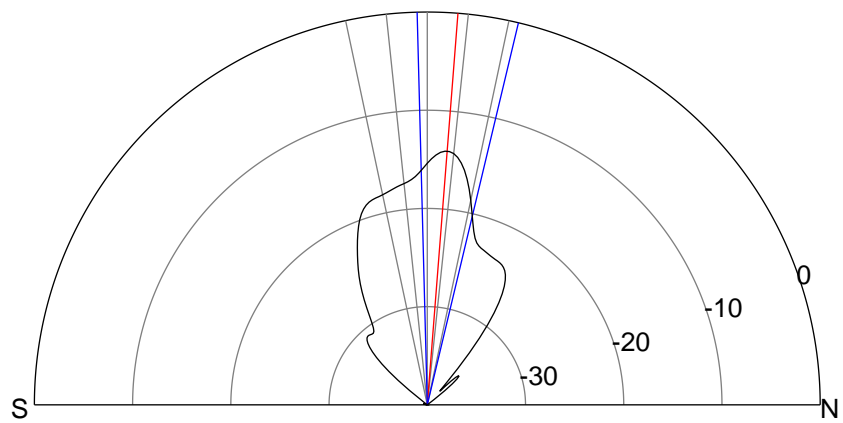
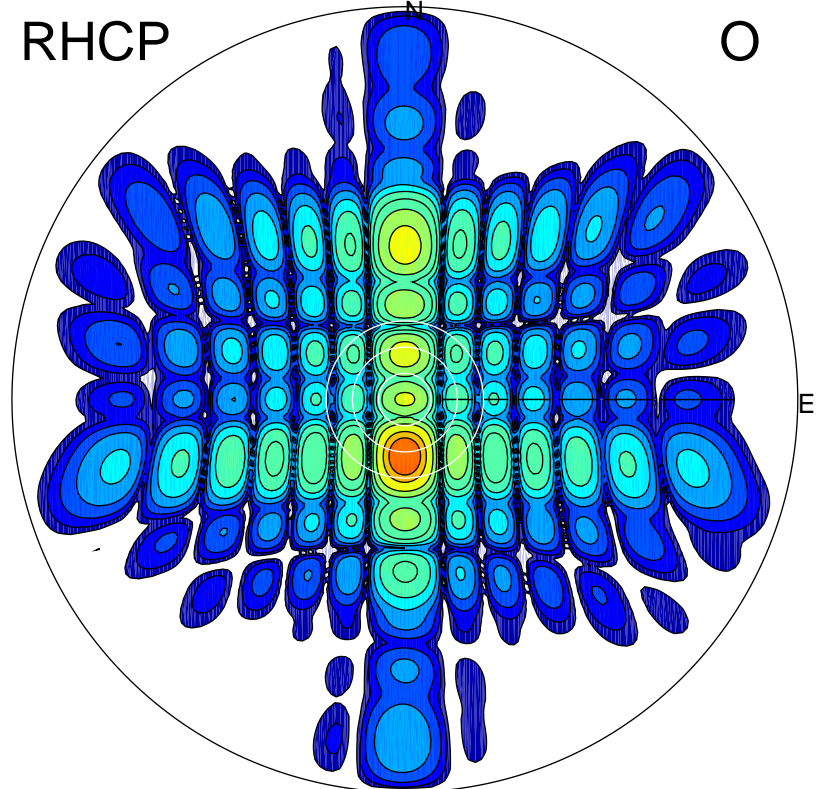
LHCP

X



RHCP

O



ERP 10.5 MW

Peak gain 12.1 dBi at Az 0 Zen 4
RHCP gain 8.3 dBi
N-S peak 12.1 dBi at Zen 4.5
N-S -3 dB beamwidth 14.9 deg.

ERP 270.3 MW

Peak gain 26.2 dBi at Az 180 Zen 13
LHCP gain 7.9 dBi
N-S peak 26.2 dBi at Zen -13.0
N-S -3 dB beamwidth 8.5 deg.