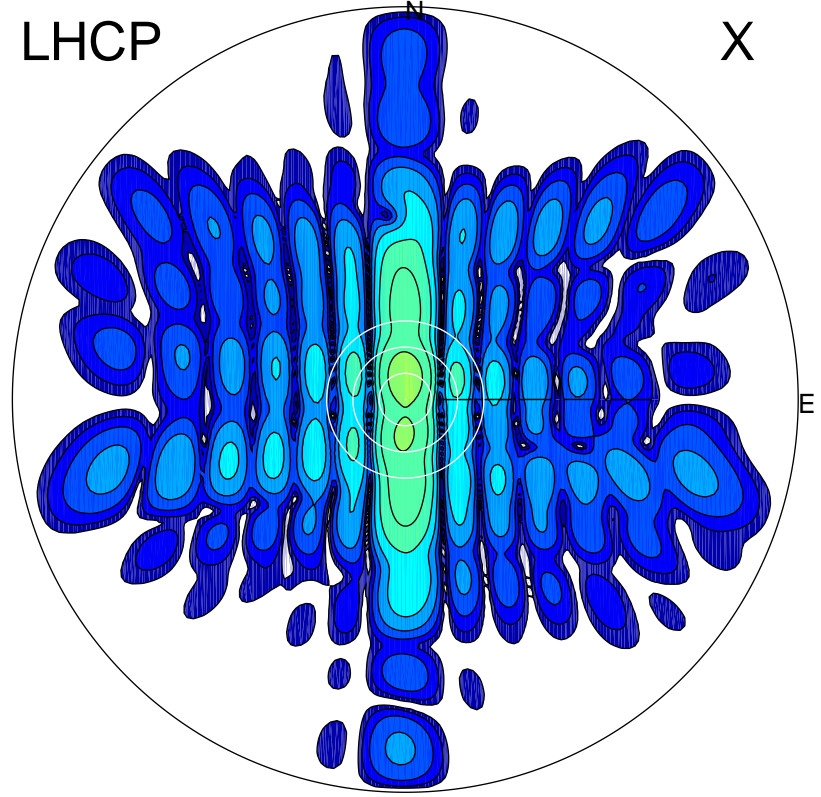


2015-10-31 14:15:45 A1 5.50000000 MHz 658.0 kW

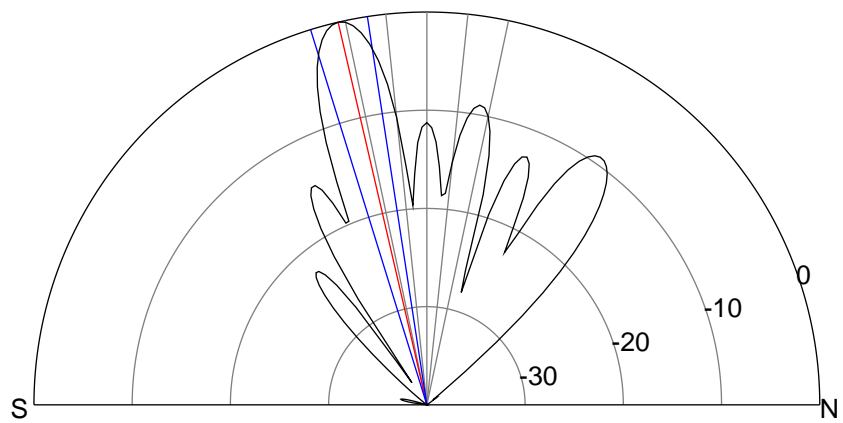
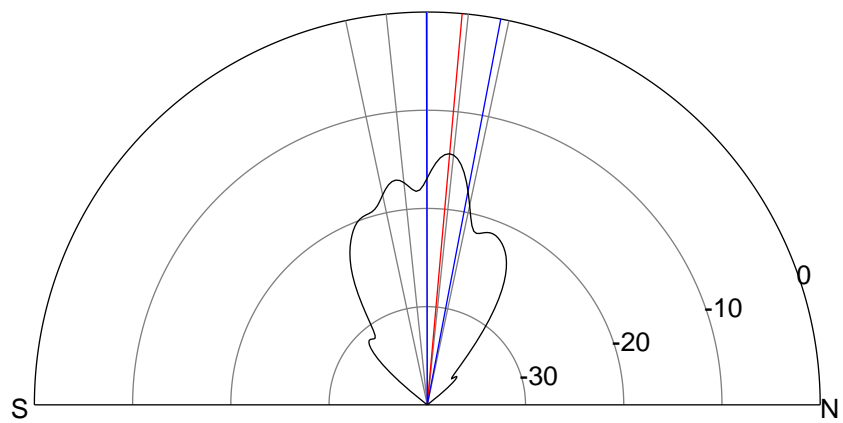
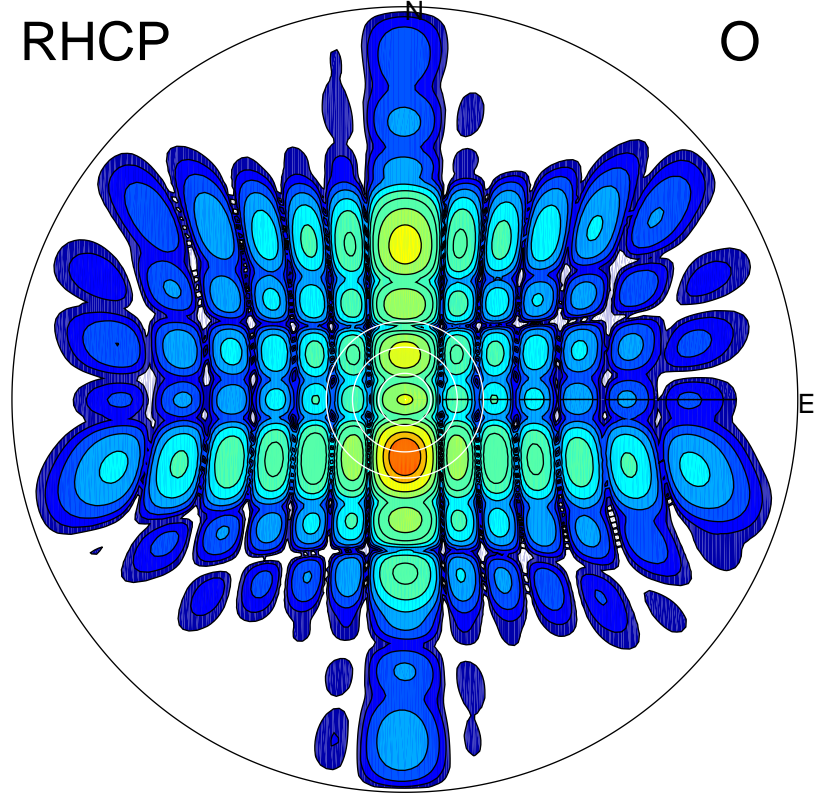
LHCP

X



RHCP

O



### ERP 10.0 MW

Peak gain 11.8 dBi at Az 359 Zen 5  
RHCP gain 7.8 dBi  
N-S peak 11.8 dBi at Zen 5.1  
N-S -3 dB beamwidth 10.9 deg.

### ERP 270.6 MW

Peak gain 26.1 dBi at Az 180 Zen 13  
LHCP gain 7.5 dBi  
N-S peak 26.1 dBi at Zen -13.1  
N-S -3 dB beamwidth 8.5 deg.