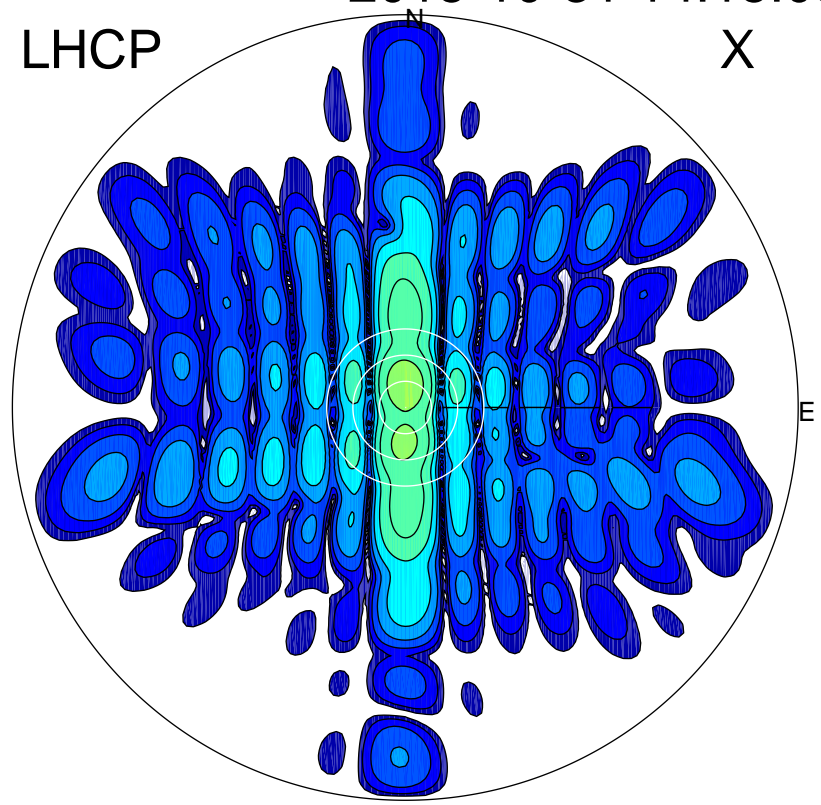


2015-10-31 14:15:05 A1 5.48000000 MHz 665.0 kW

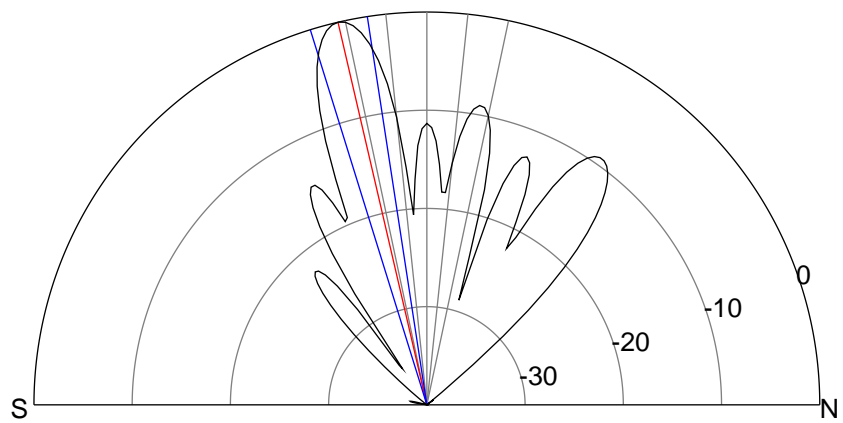
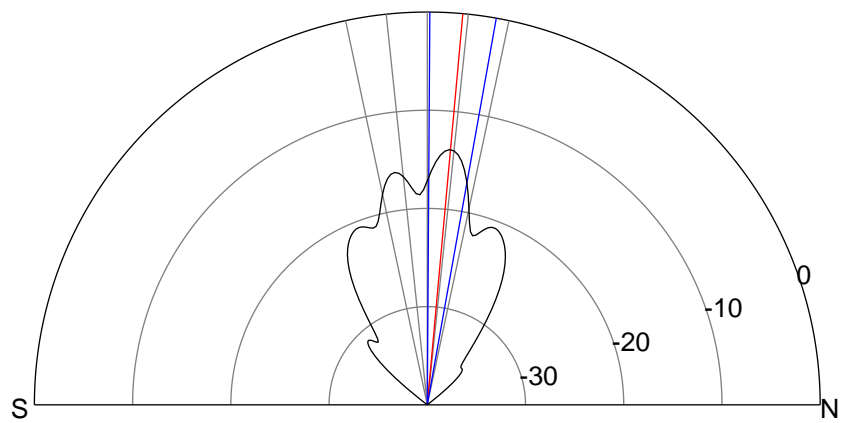
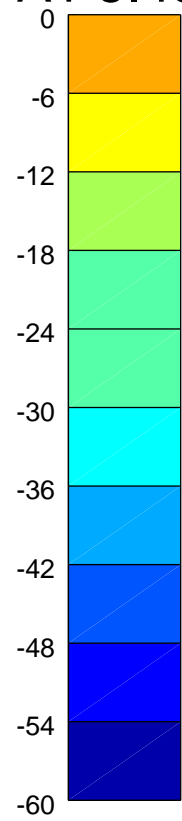
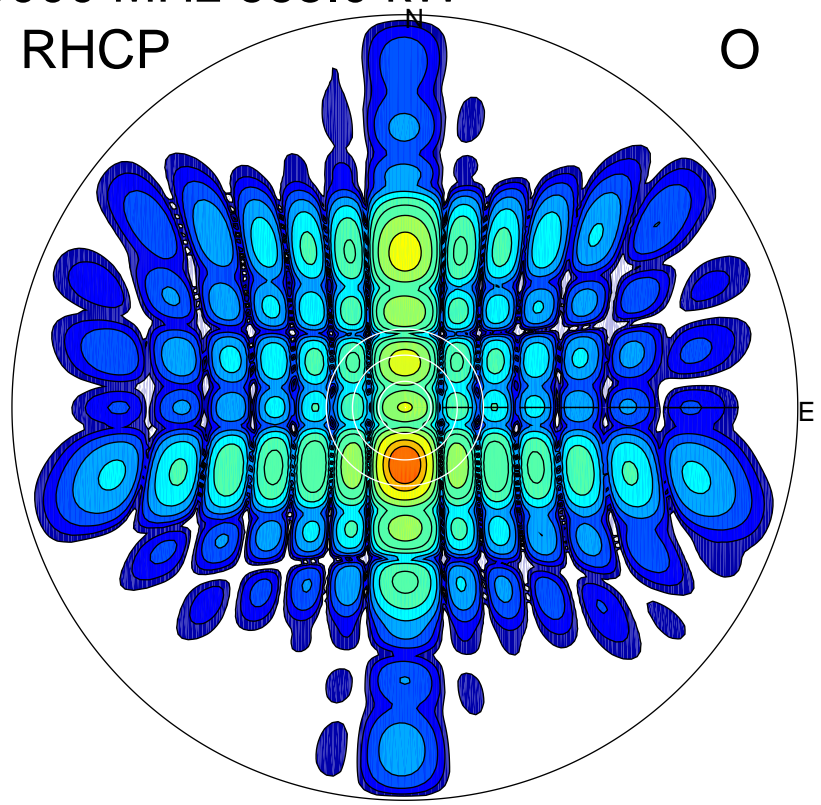
LHCP

X



RHCP

O



### ERP 11.0 MW

Peak gain 12.2 dBi at Az 359 Zen 5  
RHCP gain 7.8 dBi  
N-S peak 12.2 dBi at Zen 5.2  
N-S -3 dB beamwidth 9.7 deg.

### ERP 271.2 MW

Peak gain 26.1 dBi at Az 180 Zen 13  
LHCP gain 7.1 dBi  
N-S peak 26.1 dBi at Zen -13.1  
N-S -3 dB beamwidth 8.5 deg.