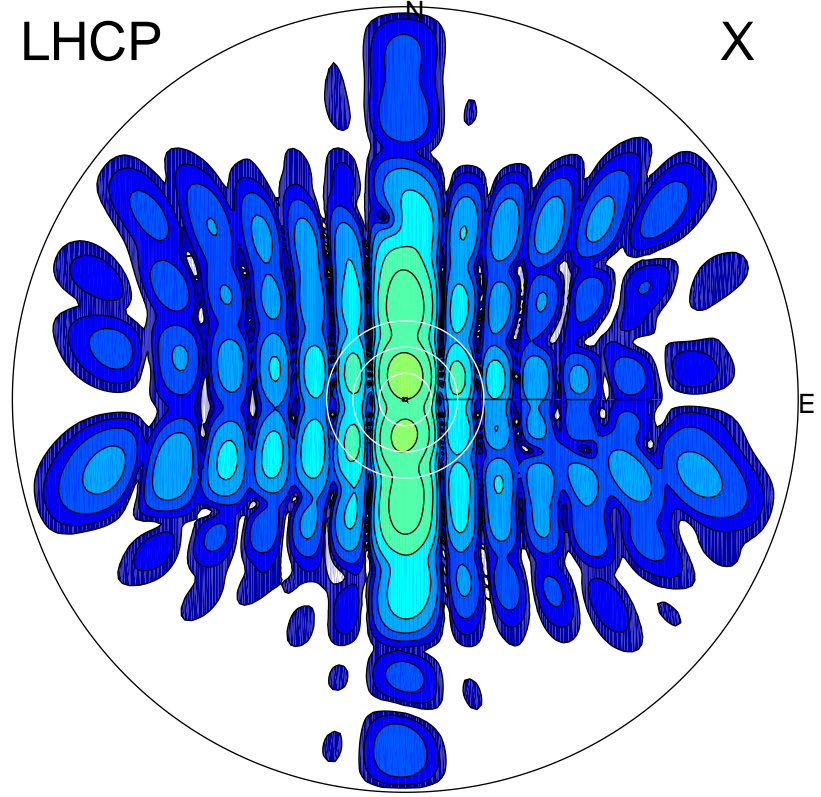


2015-10-31 14:14:25 A1 5.46000000 MHz 670.0 kW

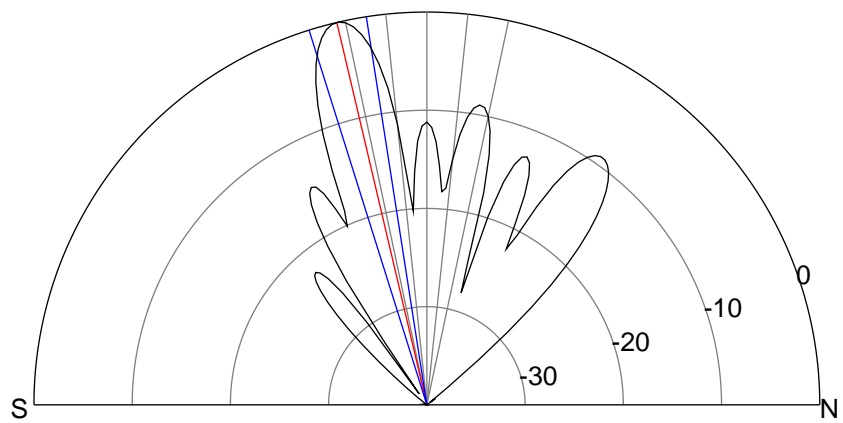
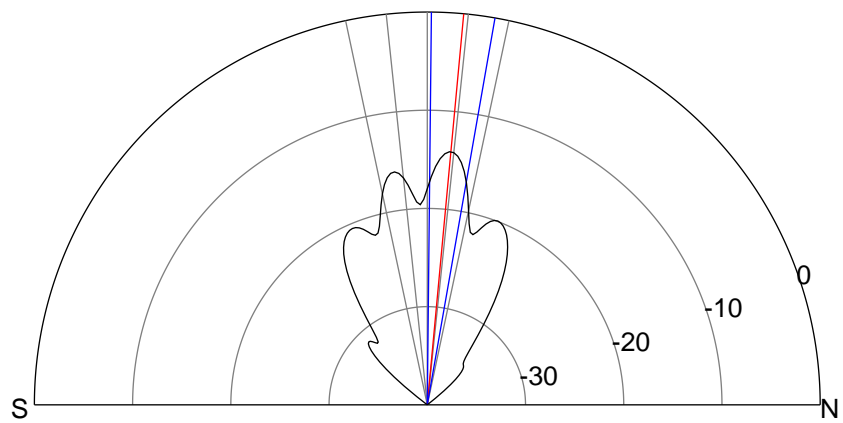
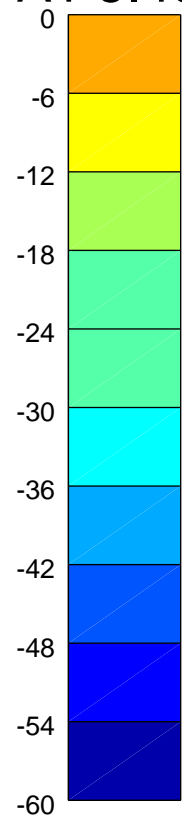
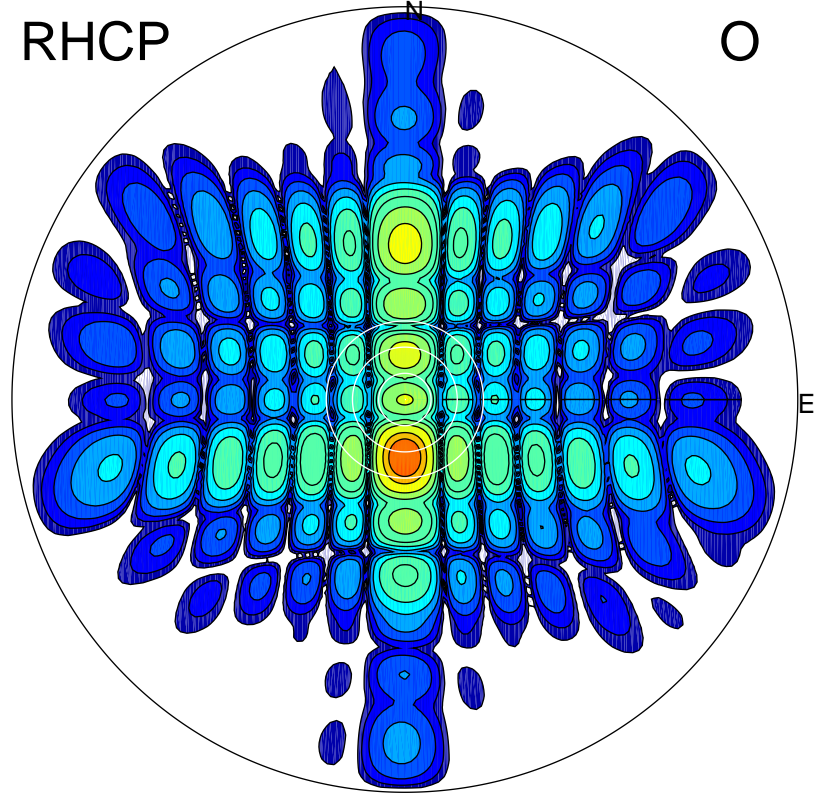
LHCP

X



RHCP

O



### ERP 10.4 MW

Peak gain 11.9 dBi at Az 0 Zen 5  
RHCP gain 8.2 dBi  
N-S peak 11.9 dBi at Zen 5.3  
N-S -3 dB beamwidth 9.3 deg.

### ERP 270.3 MW

Peak gain 26.1 dBi at Az 180 Zen 13  
LHCP gain 7.0 dBi  
N-S peak 26.1 dBi at Zen -13.2  
N-S -3 dB beamwidth 8.6 deg.