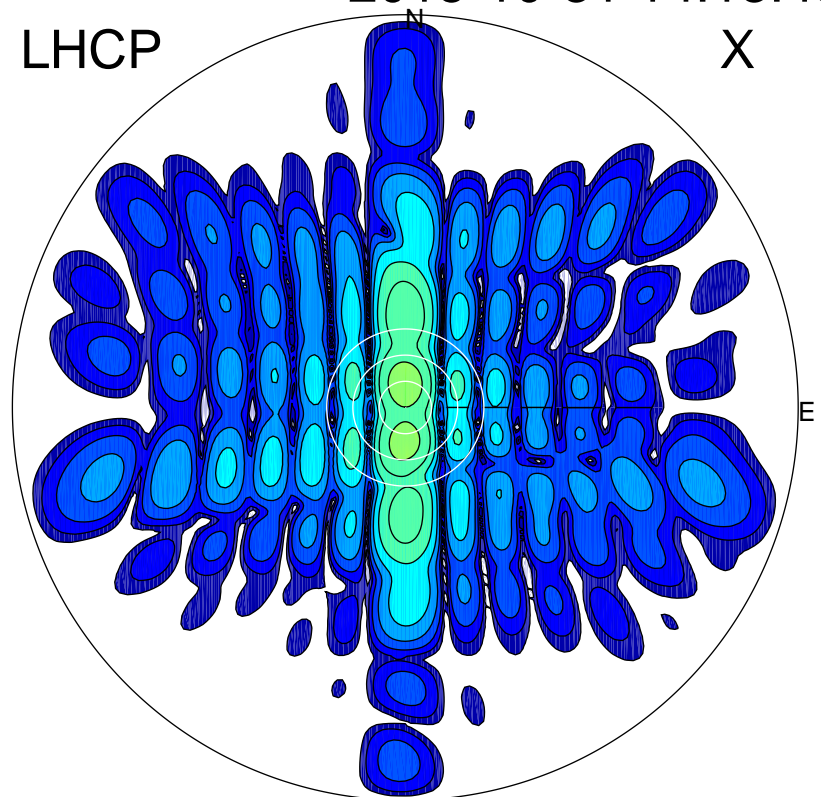


2015-10-31 14:13:45 A1 5.44000000 MHz 681.0 kW

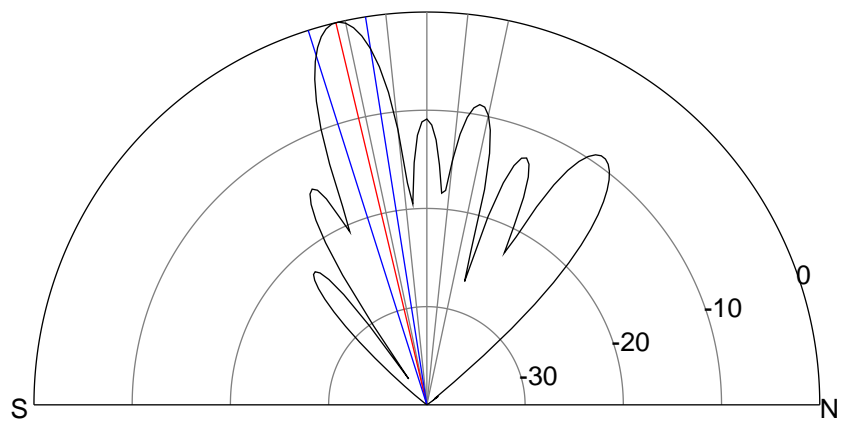
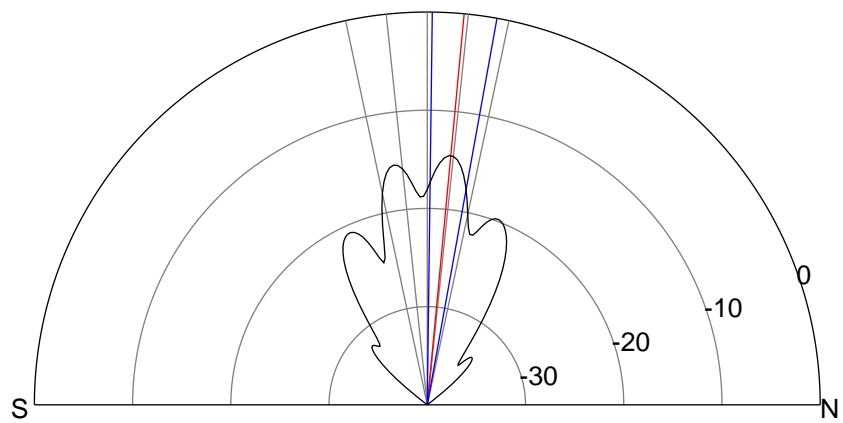
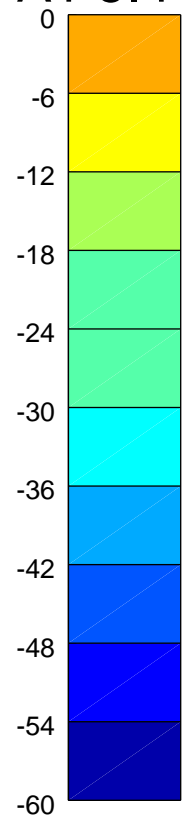
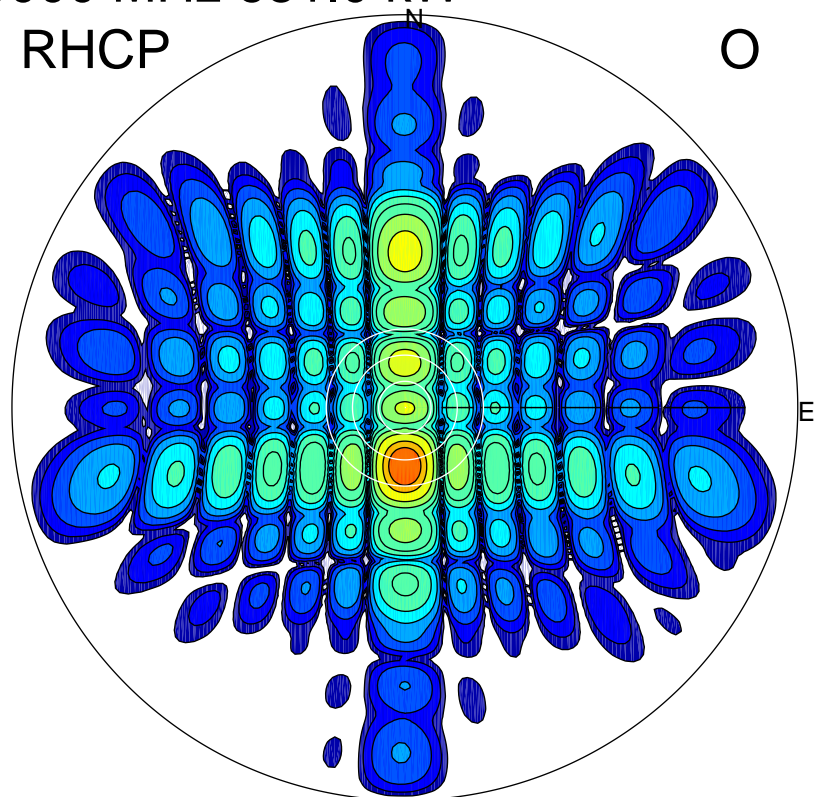
LHCP

X



RHCP

O



### ERP 9.6 MW

Peak gain 11.5 dBi at Az 359 Zen 5  
RHCP gain 7.9 dBi  
N-S peak 11.5 dBi at Zen 5.4  
N-S -3 dB beamwidth 9.5 deg.

### ERP 271.8 MW

Peak gain 26.0 dBi at Az 180 Zen 13  
LHCP gain 6.5 dBi  
N-S peak 26.0 dBi at Zen -13.4  
N-S -3 dB beamwidth 8.6 deg.