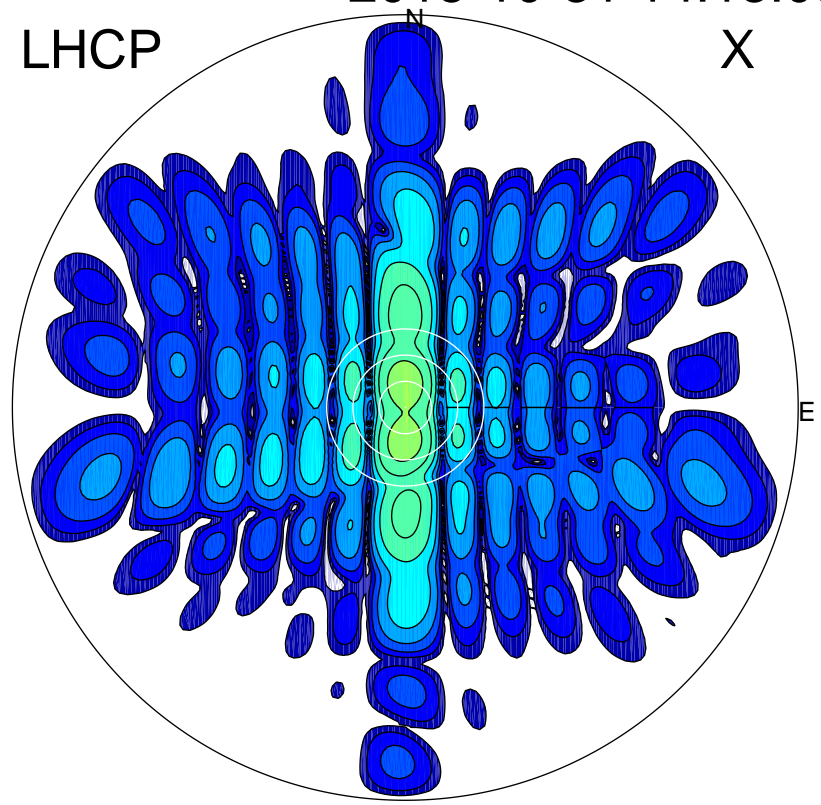


2015-10-31 14:13:05 A1 5.42000000 MHz 683.0 kW

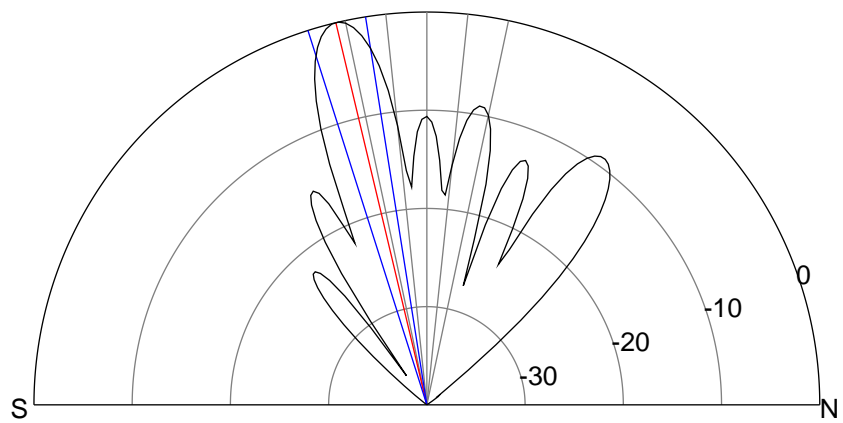
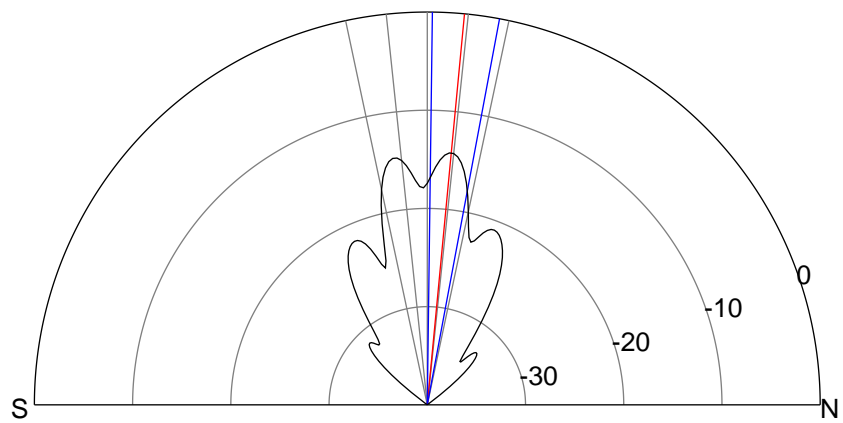
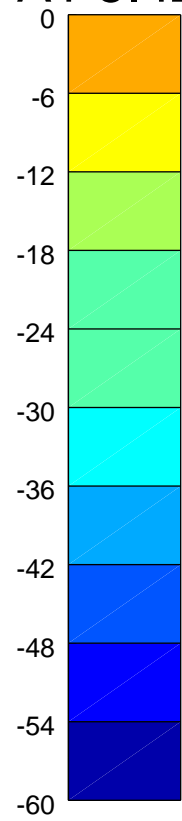
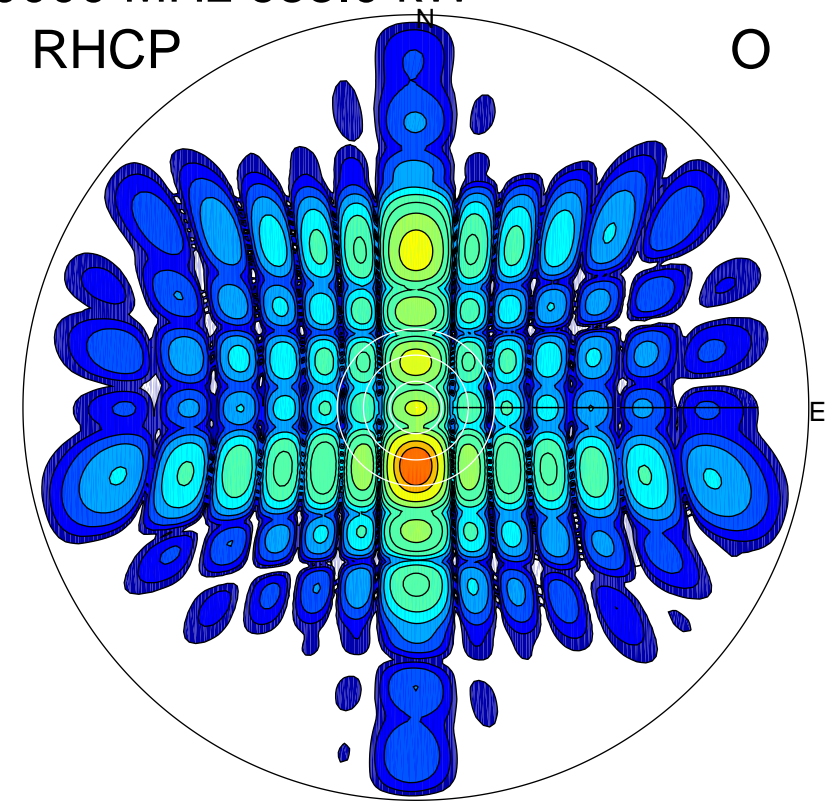
LHCP

X



RHCP

O



### ERP 10.2 MW

Peak gain 11.7 dBi at Az 359 Zen 5  
RHCP gain 7.4 dBi  
N-S peak 11.8 dBi at Zen 5.4  
N-S -3 dB beamwidth 9.9 deg.

### ERP 270.5 MW

Peak gain 26.0 dBi at Az 180 Zen 13  
LHCP gain 6.8 dBi  
N-S peak 26.0 dBi at Zen -13.4  
N-S -3 dB beamwidth 8.6 deg.