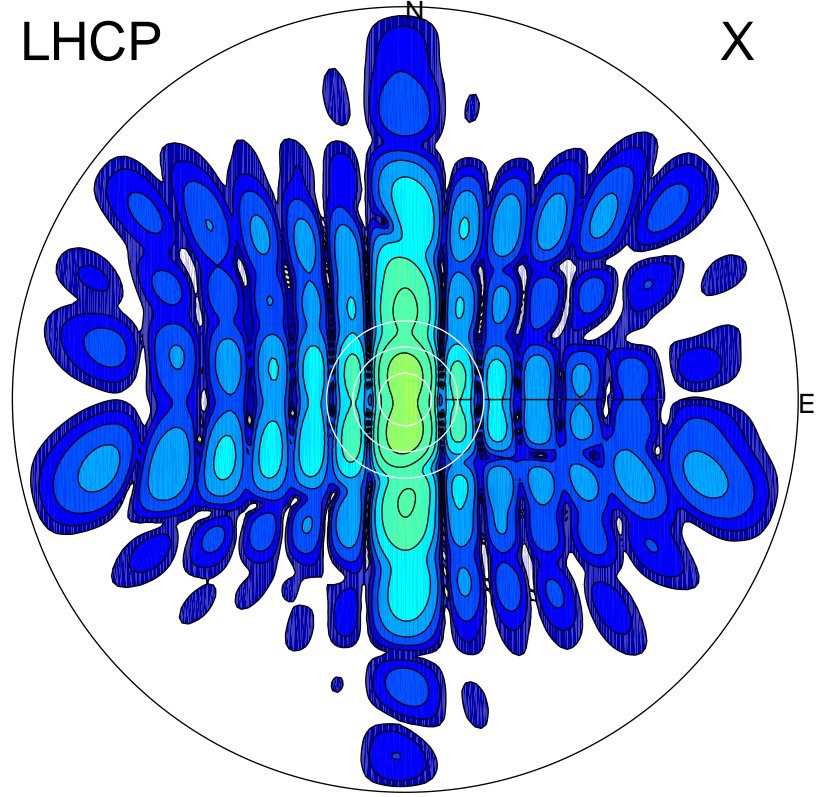


2015-10-31 14:12:25 A1 5.40000000 MHz 694.0 kW

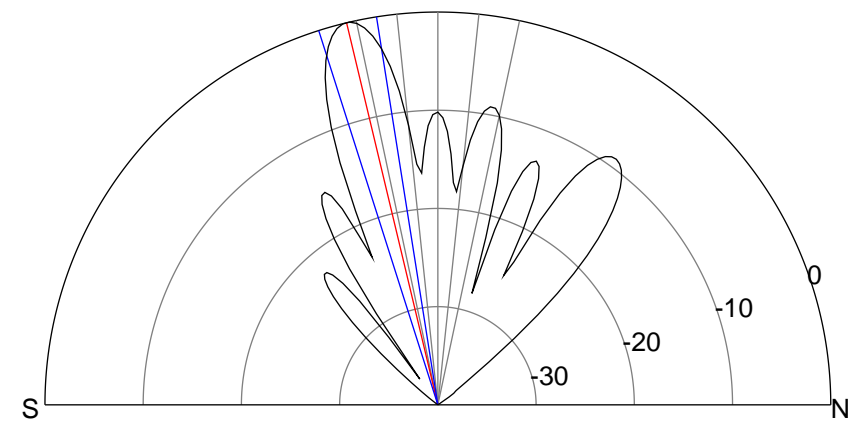
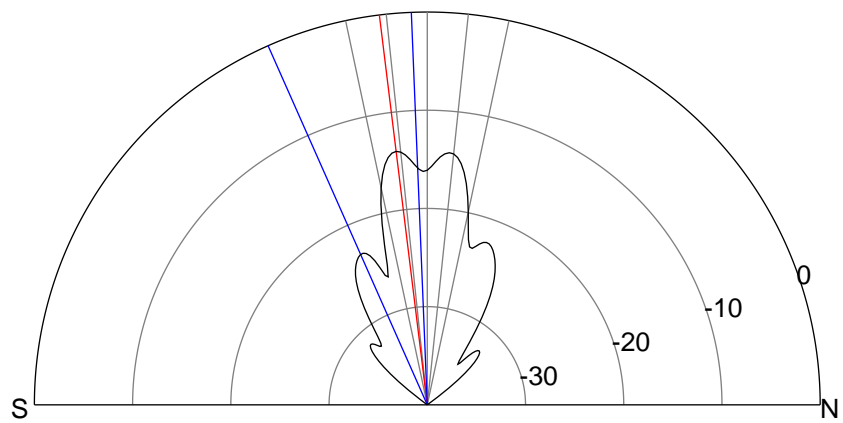
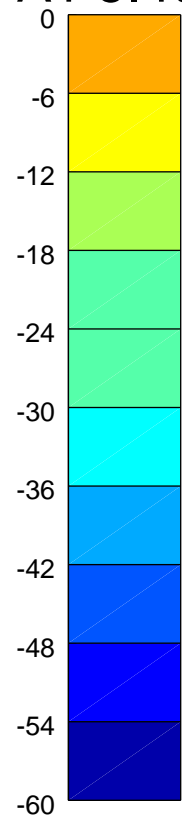
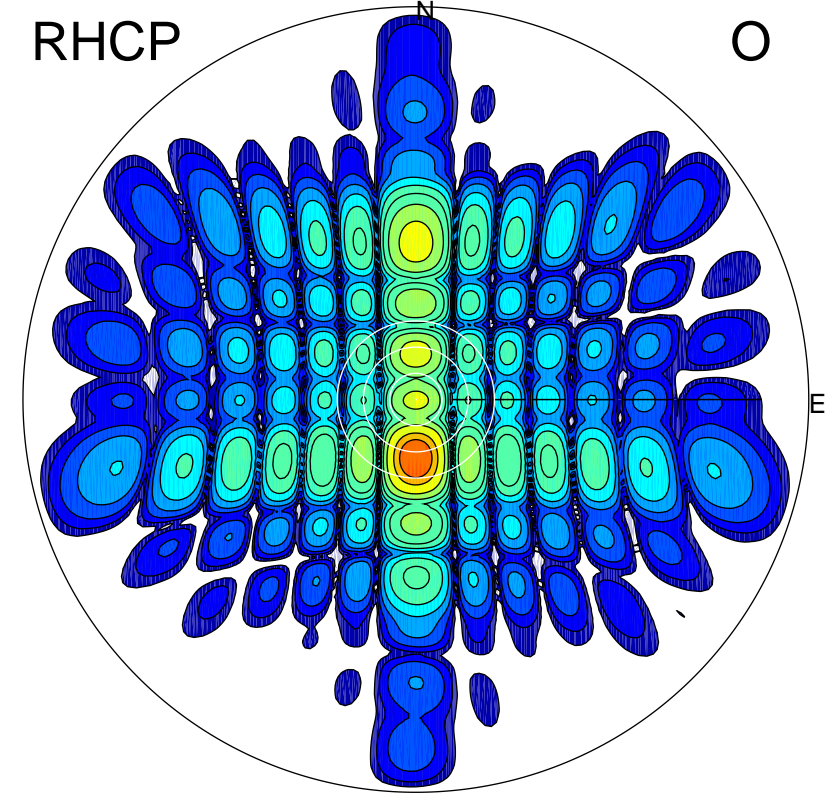
LHCP

X



RHCP

O



ERP 10.8 MW

Peak gain 11.9 dBi at Az 182 Zen 7
RHCP gain 18.1 dBi
N-S peak 11.9 dBi at Zen -7.0
N-S -3 dB beamwidth 21.6 deg.

ERP 271.5 MW

Peak gain 25.9 dBi at Az 180 Zen 13
LHCP gain 6.9 dBi
N-S peak 26.0 dBi at Zen -13.4
N-S -3 dB beamwidth 8.7 deg.