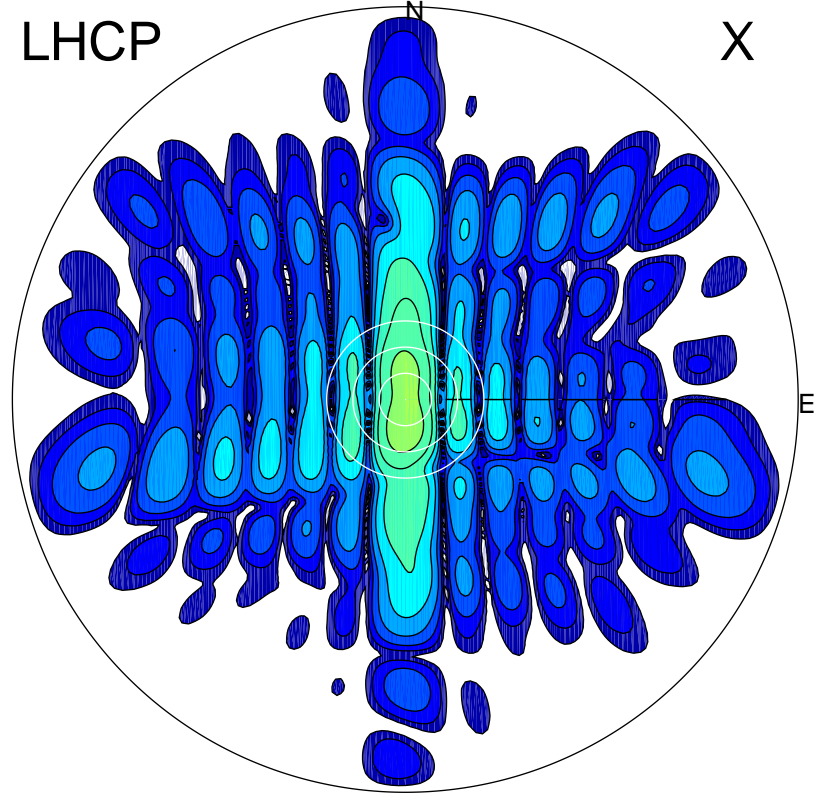


2015-10-31 14:11:45 A1 5.38000000 MHz 701.0 kW

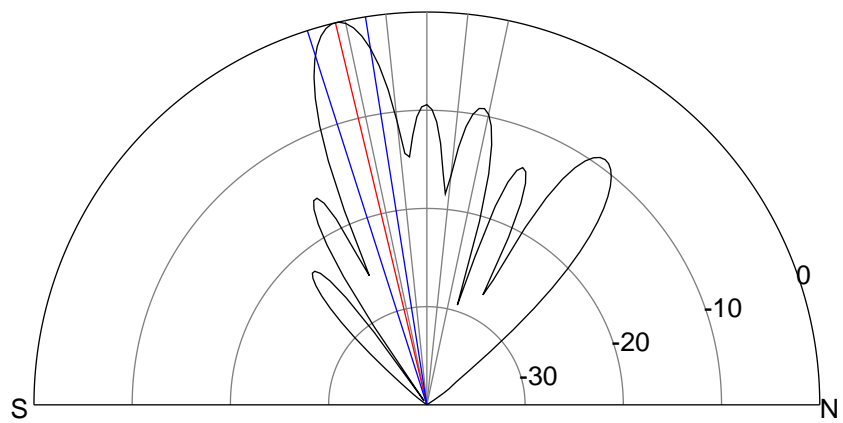
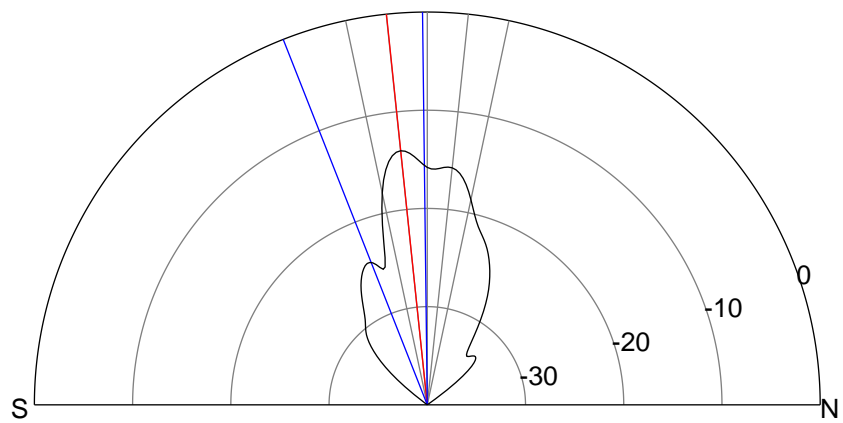
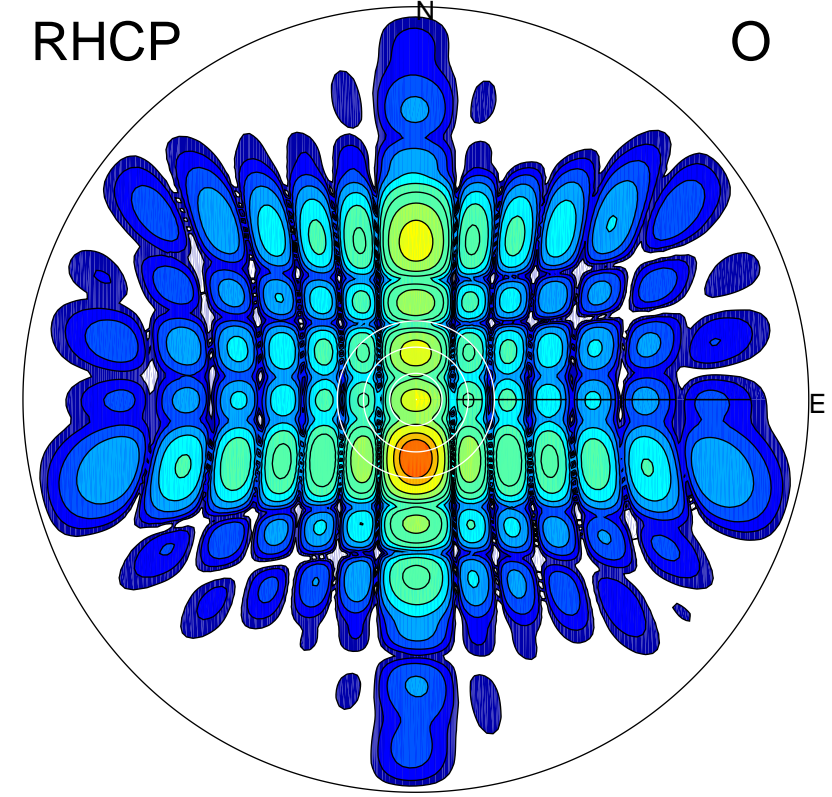
LHCP

X



RHCP

O



### ERP 10.9 MW

Peak gain 11.9 dBi at Az 181 Zen 6  
RHCP gain 14.9 dBi  
N-S peak 11.9 dBi at Zen -6.0  
N-S -3 dB beamwidth 20.8 deg.

### ERP 272.1 MW

Peak gain 25.9 dBi at Az 180 Zen 13  
LHCP gain 6.4 dBi  
N-S peak 25.9 dBi at Zen -13.5  
N-S -3 dB beamwidth 8.7 deg.