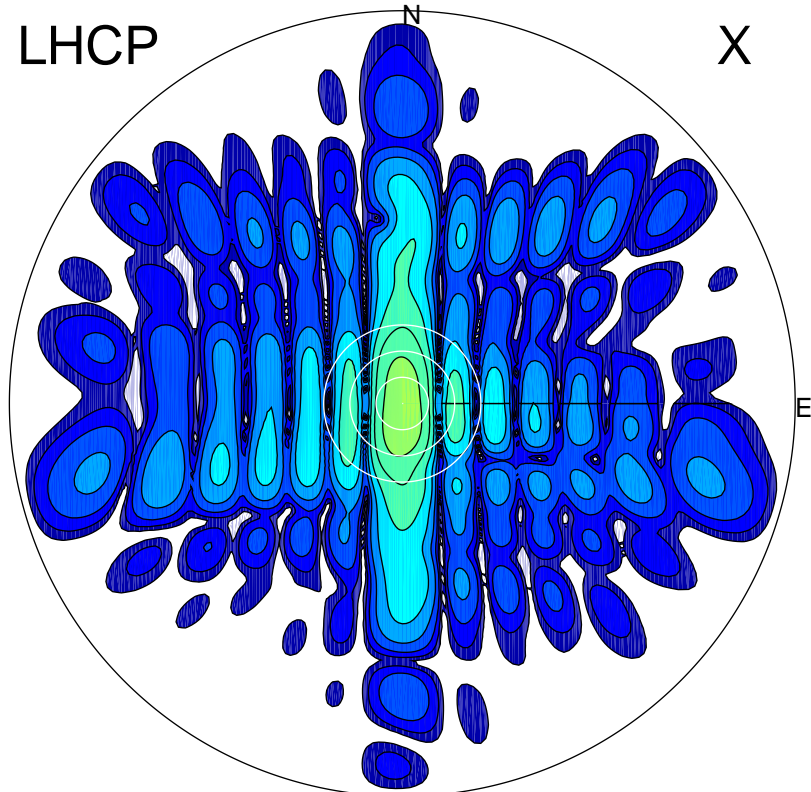


2015-10-31 14:11:05 A1 5.36000000 MHz 712.0 kW

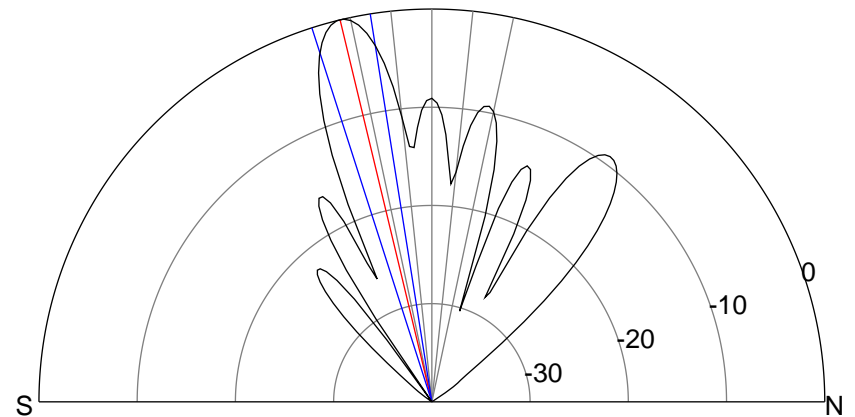
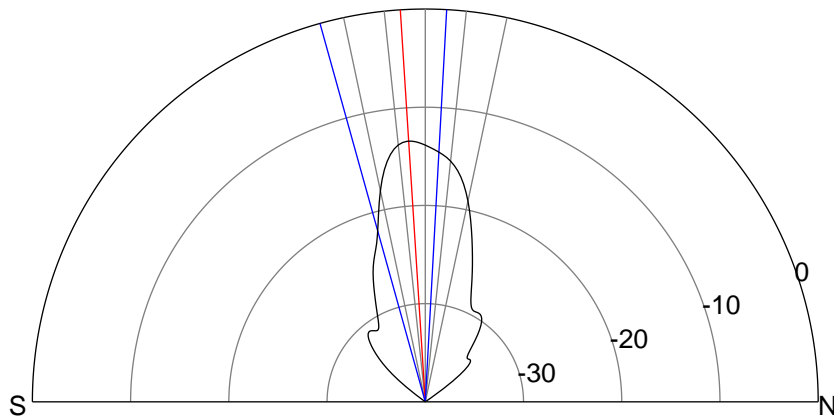
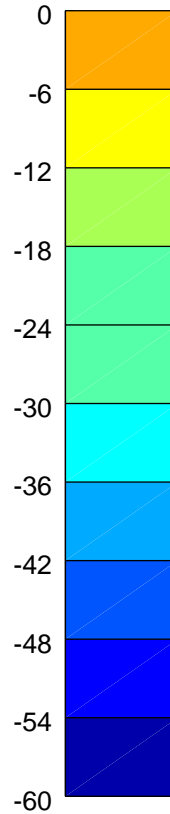
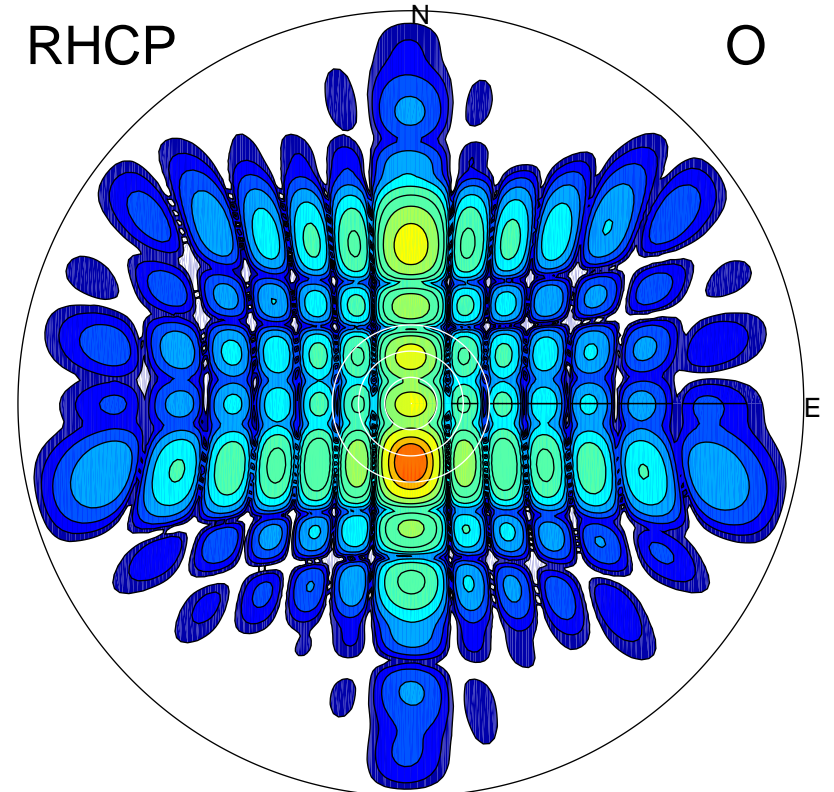
LHCP

X



RHCP

O



ERP 12.4 MW

Peak gain 12.4 dBi at Az 180 Zen 4
RHCP gain 11.8 dBi
N-S peak 12.4 dBi at Zen -3.6
N-S -3 dB beamwidth 18.7 deg.

ERP 271.7 MW

Peak gain 25.8 dBi at Az 180 Zen 14
LHCP gain 5.5 dBi
N-S peak 25.9 dBi at Zen -13.5
N-S -3 dB beamwidth 8.8 deg.