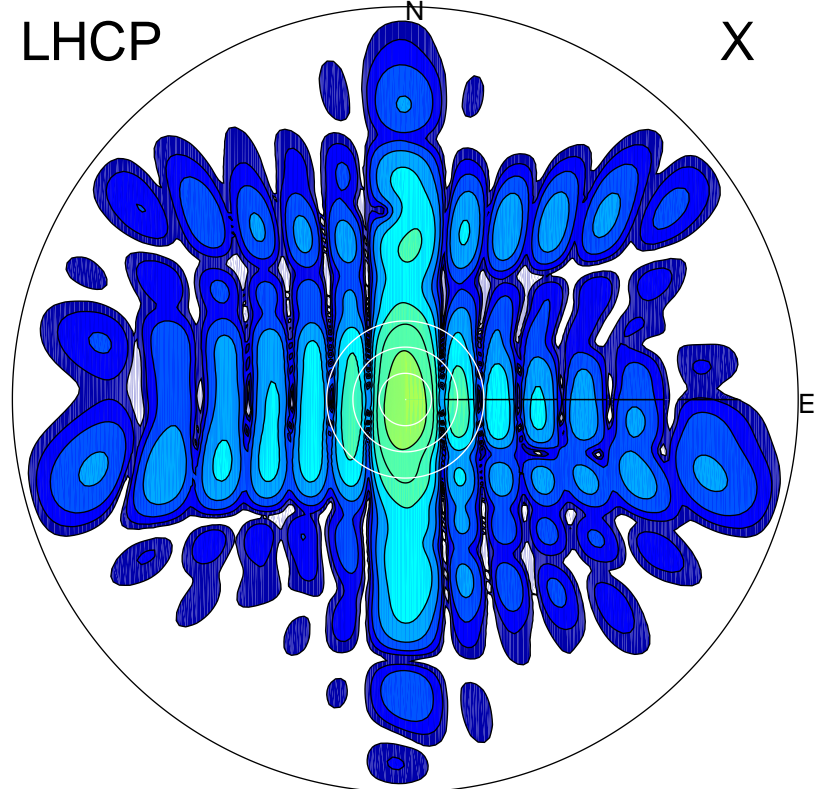


2015-10-31 14:10:25 A1 5.34000000 MHz 720.0 kW

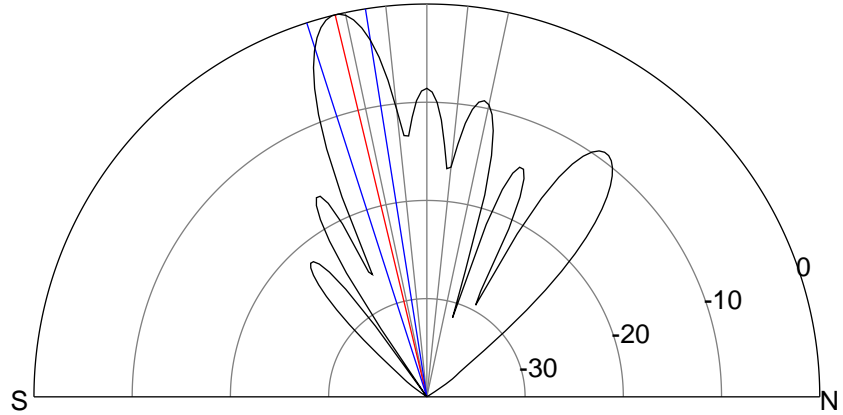
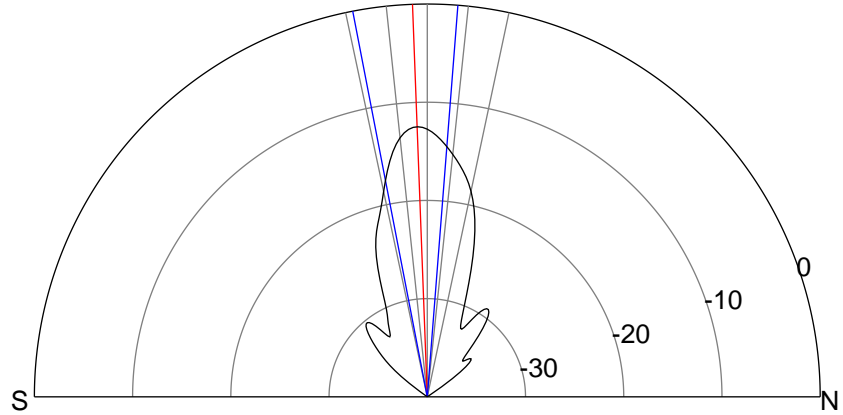
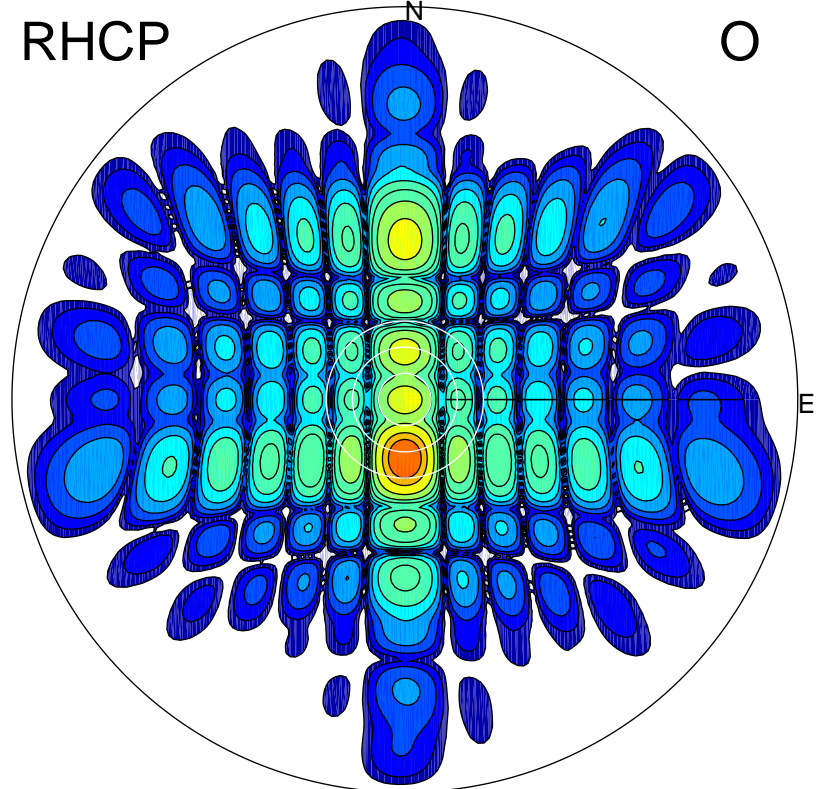
LHCP

X



RHCP

O



ERP 15.2 MW

Peak gain 13.2 dBi at Az 180 Zen 2
RHCP gain 15.9 dBi
N-S peak 13.2 dBi at Zen -2.2
N-S -3 dB beamwidth 15.4 deg.

ERP 269.4 MW

Peak gain 25.7 dBi at Az 180 Zen 13
LHCP gain 6.2 dBi
N-S peak 25.8 dBi at Zen -13.5
N-S -3 dB beamwidth 8.8 deg.