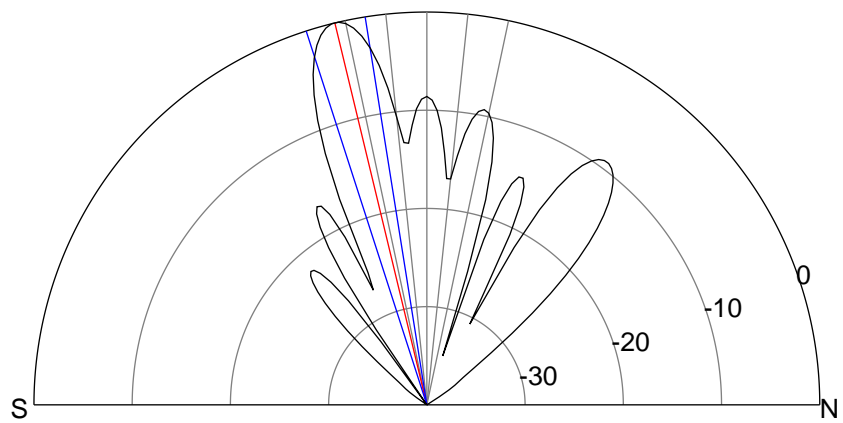
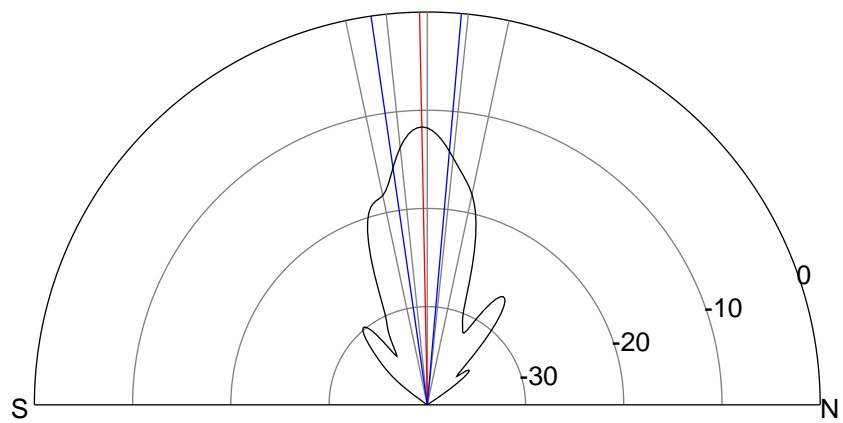
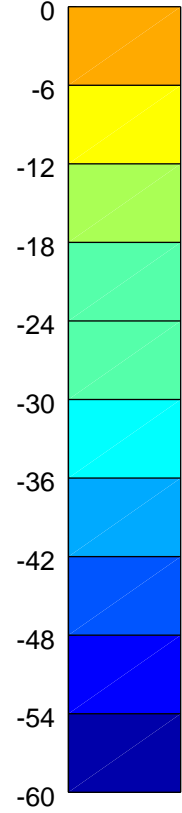
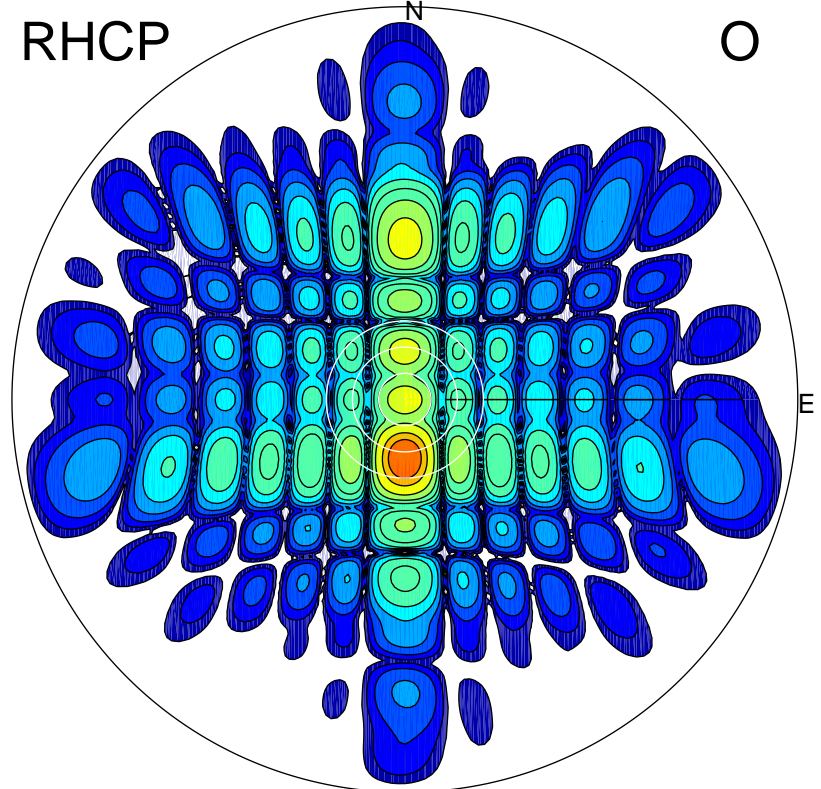
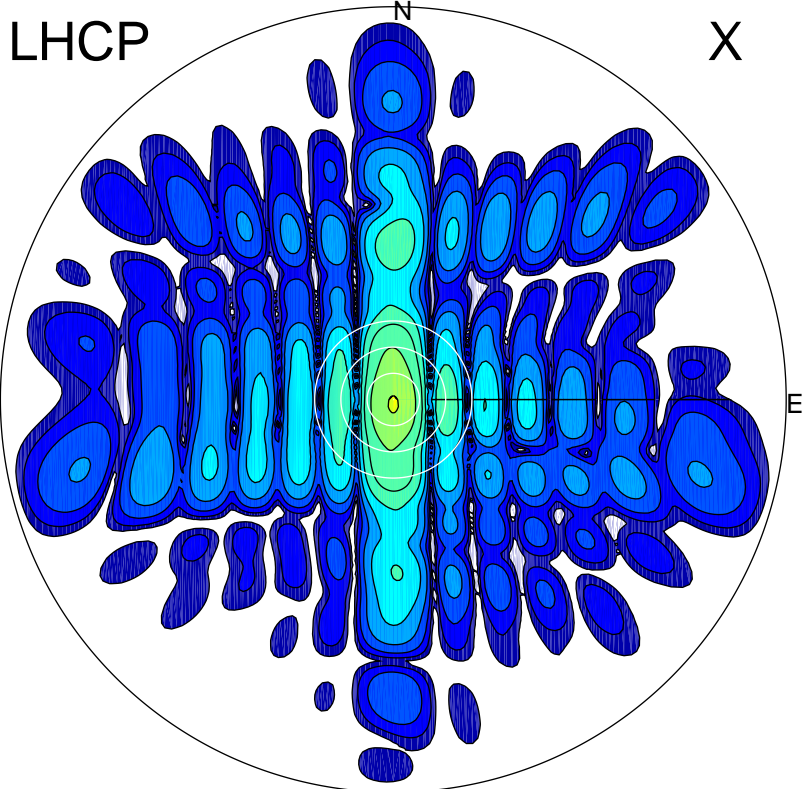


2015-10-31 14:09:45 A1 5.32000000 MHz 739.0 kW



ERP 18.4 MW

Peak gain 14.0 dBi at Az 180 Zen 1
RHCP gain 16.8 dBi
N-S peak 14.0 dBi at Zen -1.1
N-S -3 dB beamwidth 13.2 deg.

ERP 272.4 MW

Peak gain 25.7 dBi at Az 180 Zen 14
LHCP gain 7.1 dBi
N-S peak 25.7 dBi at Zen -13.5
N-S -3 dB beamwidth 8.8 deg.