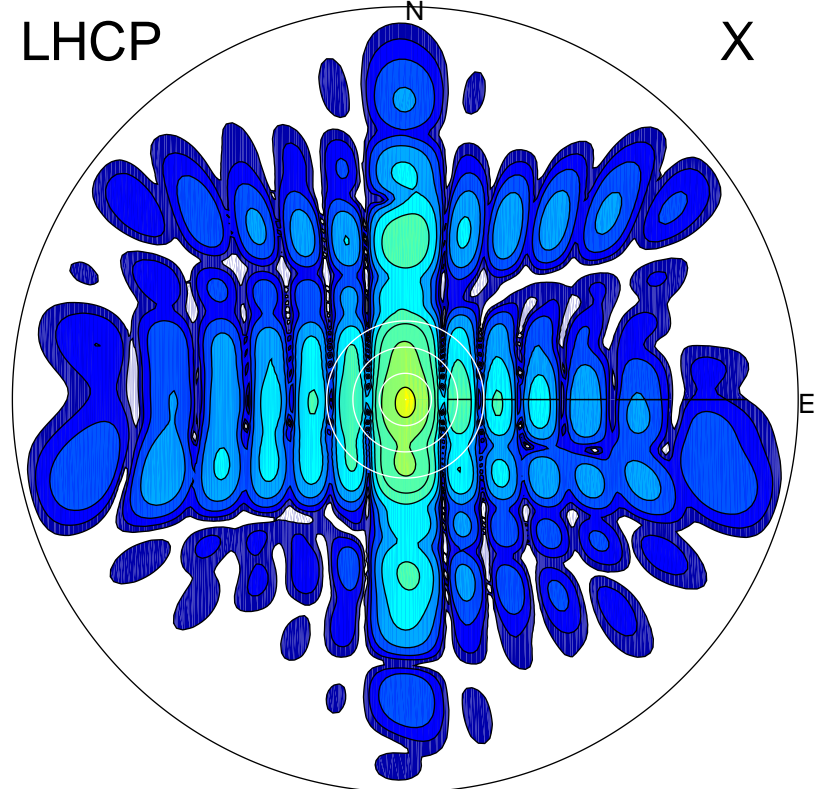


2015-10-31 14:09:05 A1 5.30000000 MHz 754.0 kW

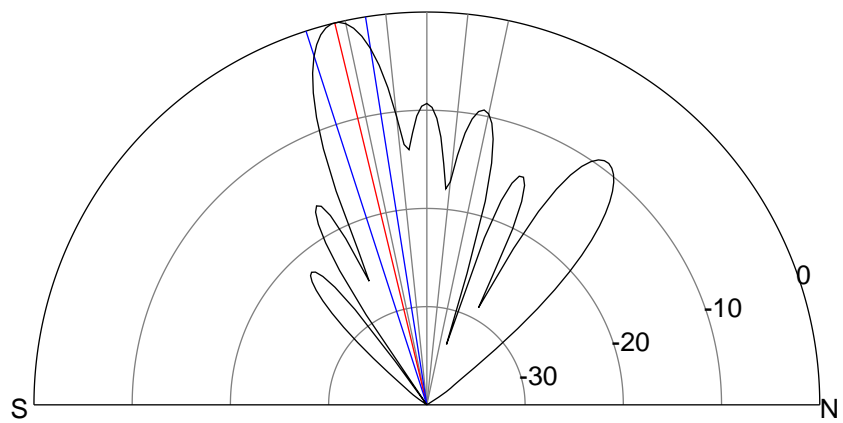
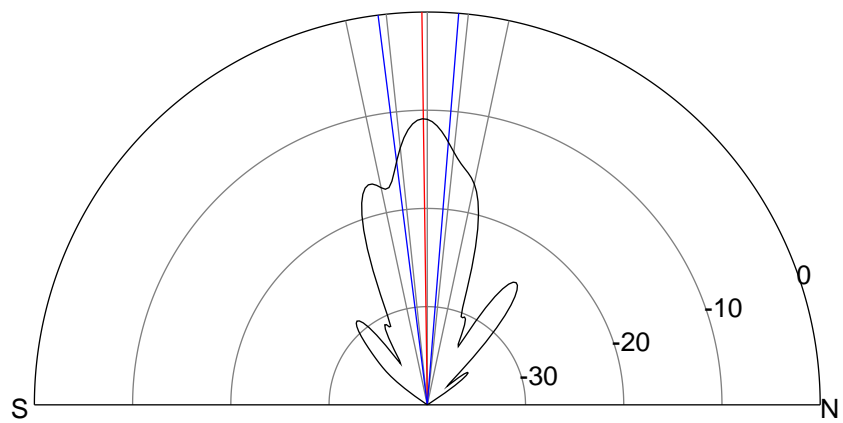
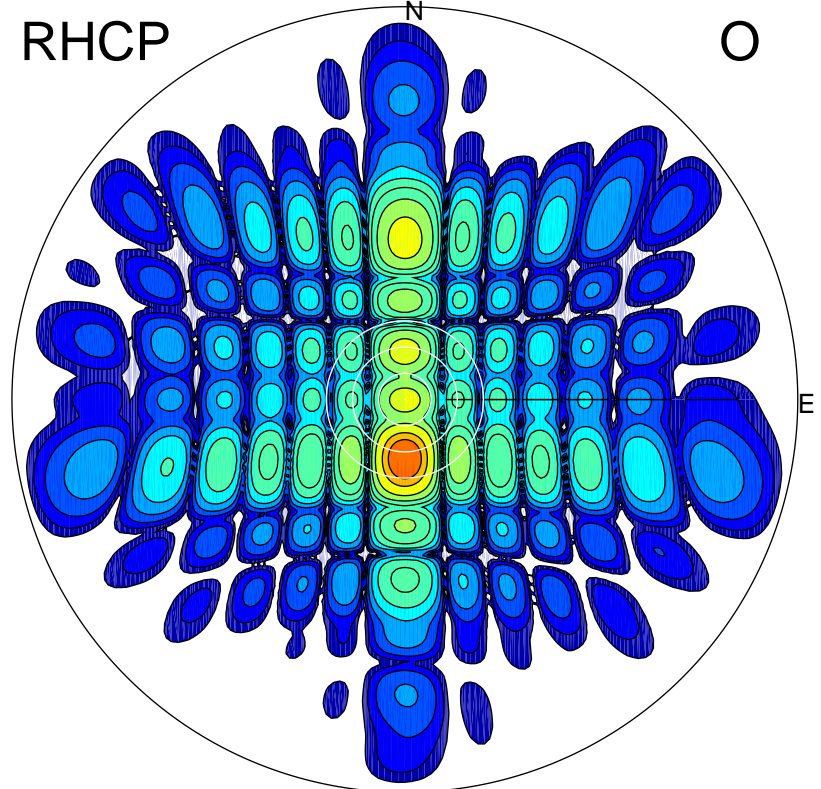
LHCP

X



RHCP

O



ERP 22.4 MW

Peak gain 14.7 dBi at Az 181 Zen 1
RHCP gain 16.0 dBi
N-S peak 14.7 dBi at Zen -0.8
N-S -3 dB beamwidth 11.8 deg.

ERP 273.8 MW

Peak gain 25.6 dBi at Az 180 Zen 14
LHCP gain 8.8 dBi
N-S peak 25.6 dBi at Zen -13.6
N-S -3 dB beamwidth 8.9 deg.