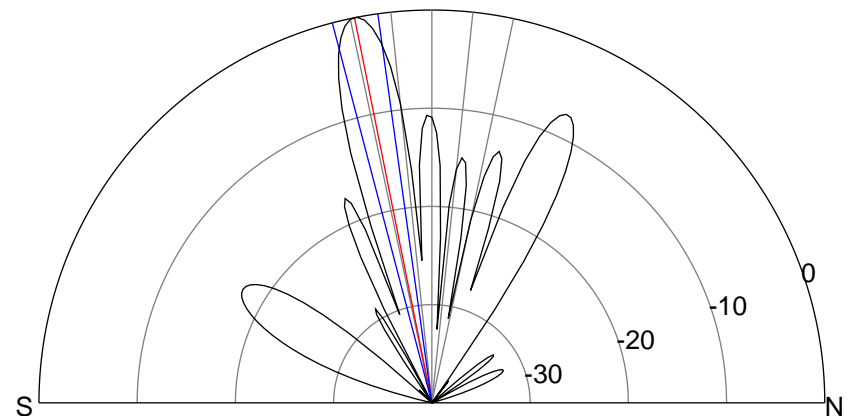
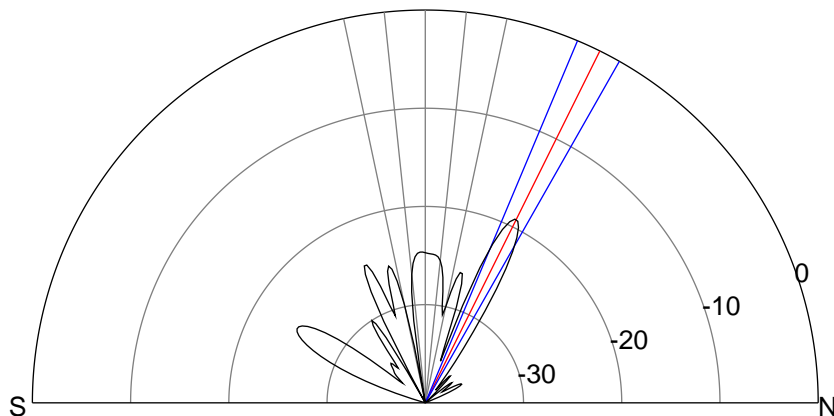
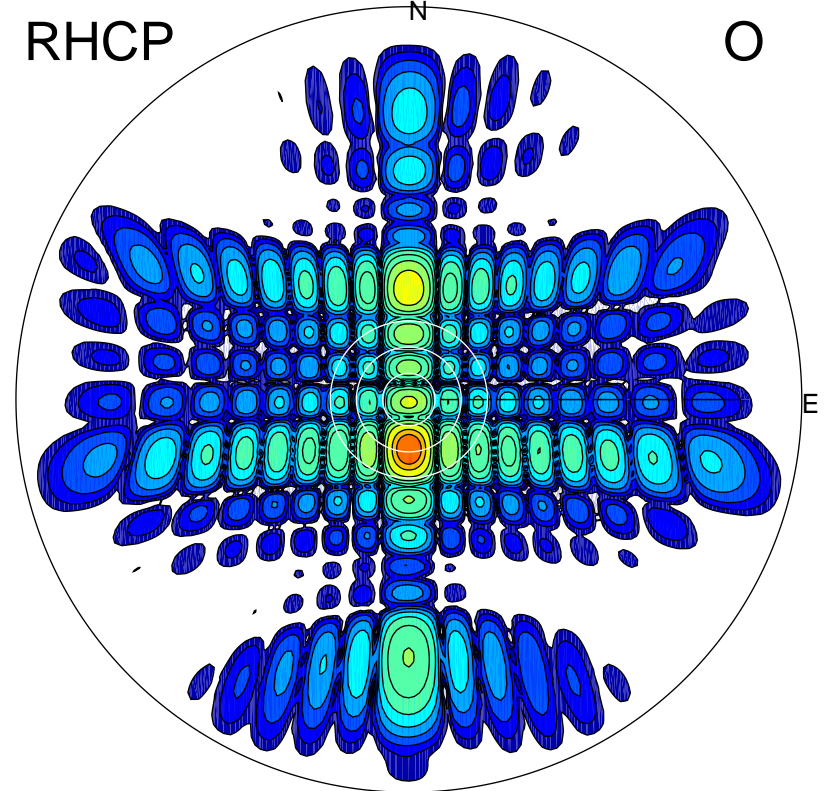
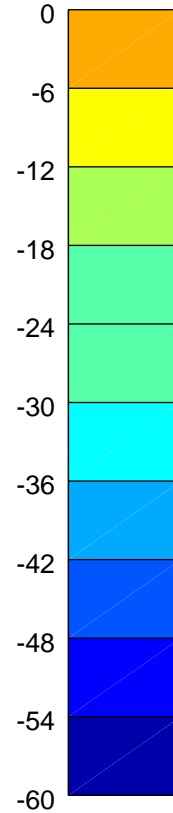
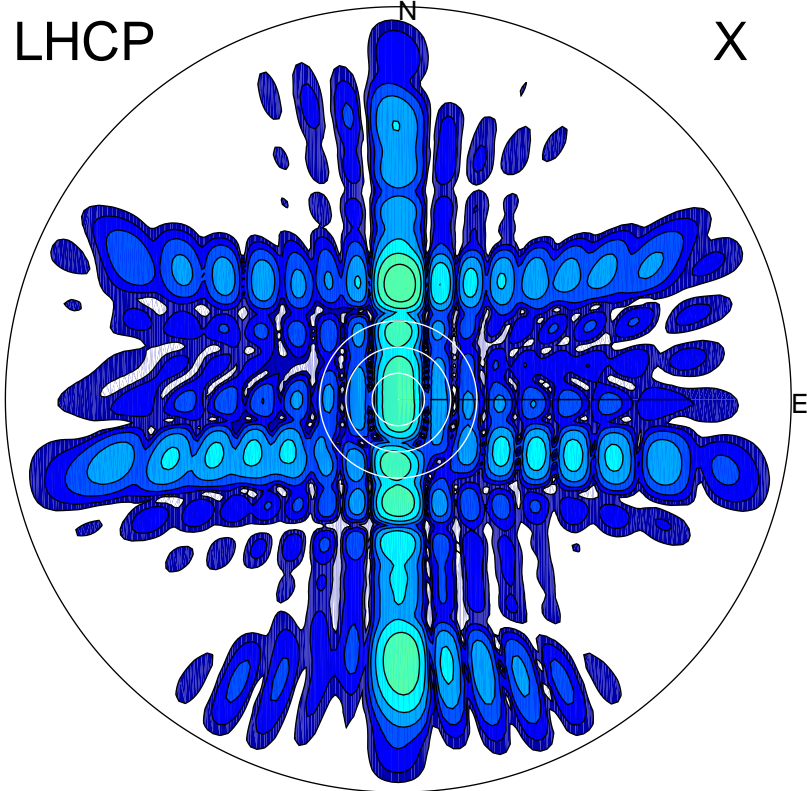


2015-10-31 13:06:30 A1 7.10000000 MHz 85.0 kW



ERP 0.7 MW

Peak gain 9.3 dBi at Az 1 Zen 26
RHCP gain 20.6 dBi
N-S peak 9.3 dBi at Zen 26.4
N-S -3 dB beamwidth 6.8 deg.

ERP 59.1 MW

Peak gain 28.4 dBi at Az 180 Zen 11
LHCP gain -5.7 dBi
N-S peak 28.5 dBi at Zen -11.4
N-S -3 dB beamwidth 6.8 deg.