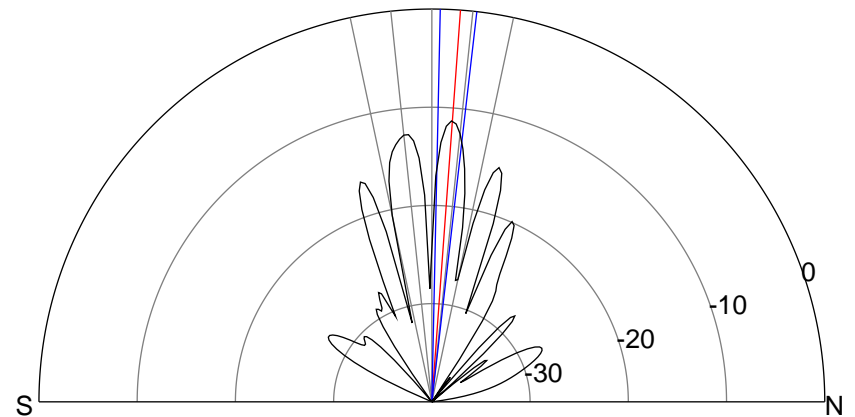
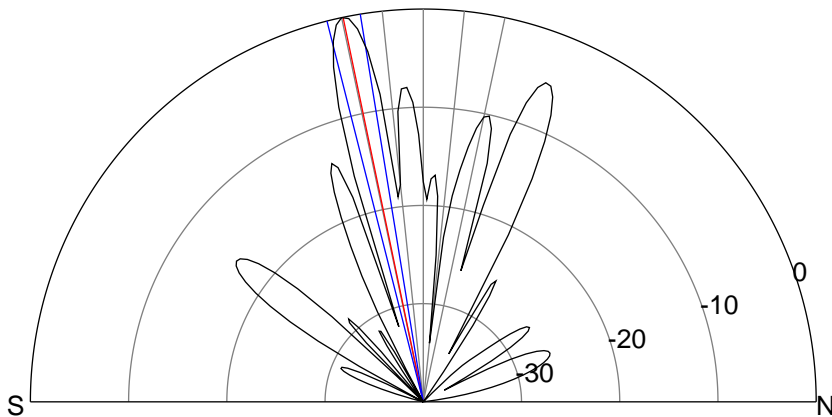
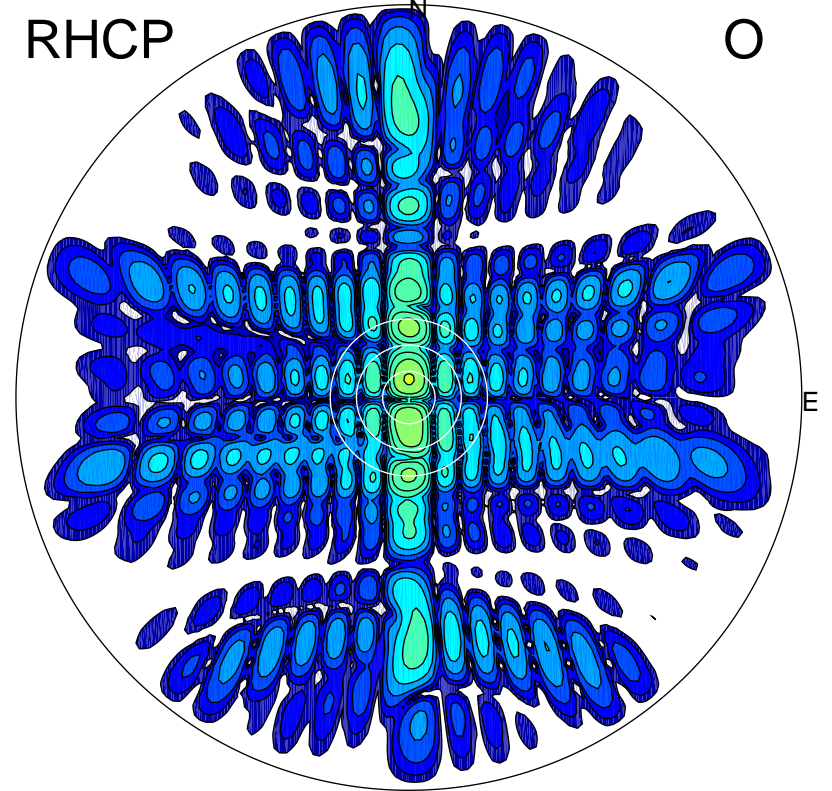
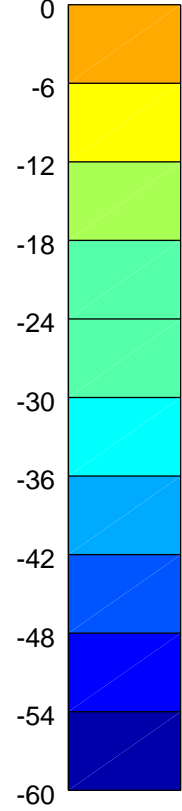
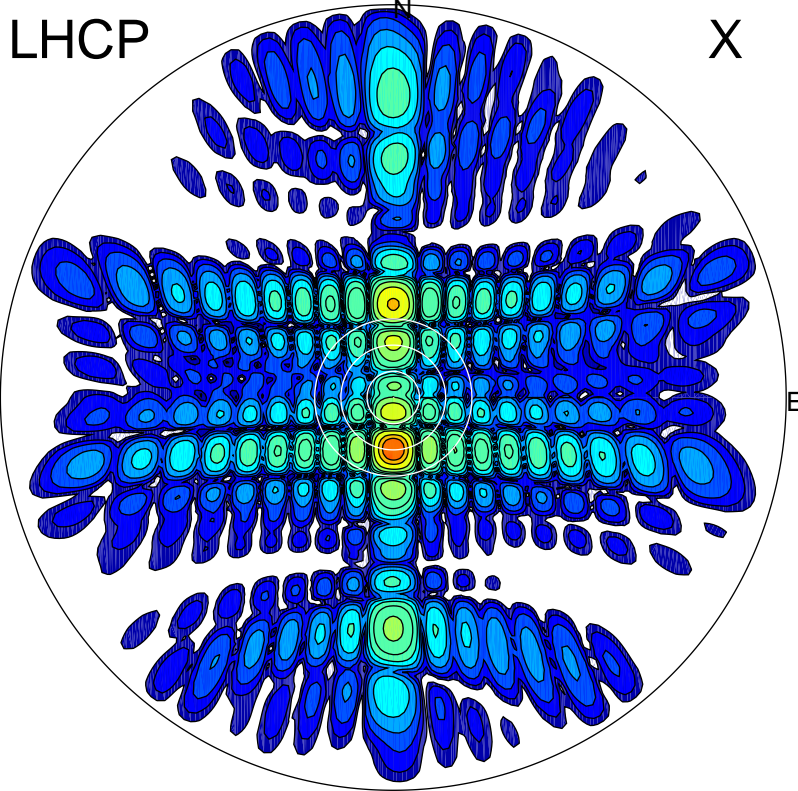


2015-10-30 12:19:57 A1 7.95300000 MHz 734.0 kW



### ERP 561.0 MW

Peak gain 28.8 dBi at Az 180 Zen 12  
RHCP gain 8.2 dBi  
N-S peak 28.9 dBi at Zen -11.8  
N-S -3 dB beamwidth 5.0 deg.

### ERP 41.3 MW

Peak gain 17.5 dBi at Az 0 Zen 4  
LHCP gain 9.8 dBi  
N-S peak 17.5 dBi at Zen 4.2  
N-S -3 dB beamwidth 5.3 deg.