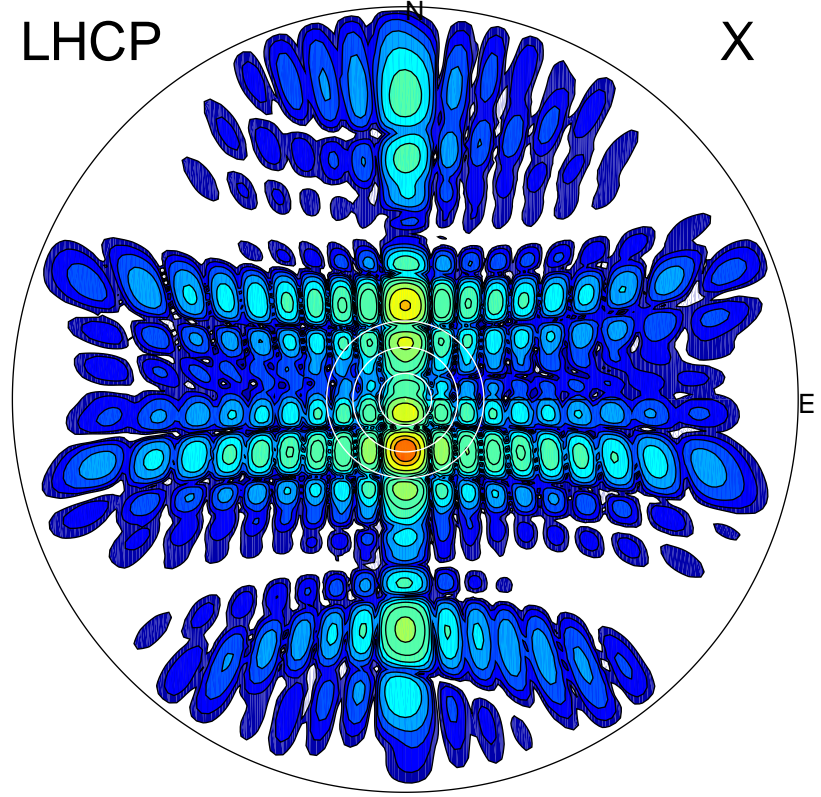


2015-10-30 12:07:57 A1 7.95300000 MHz 728.0 kW

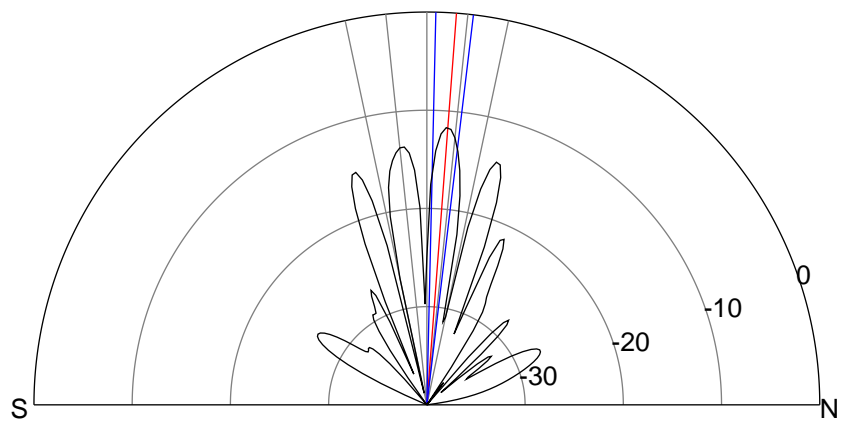
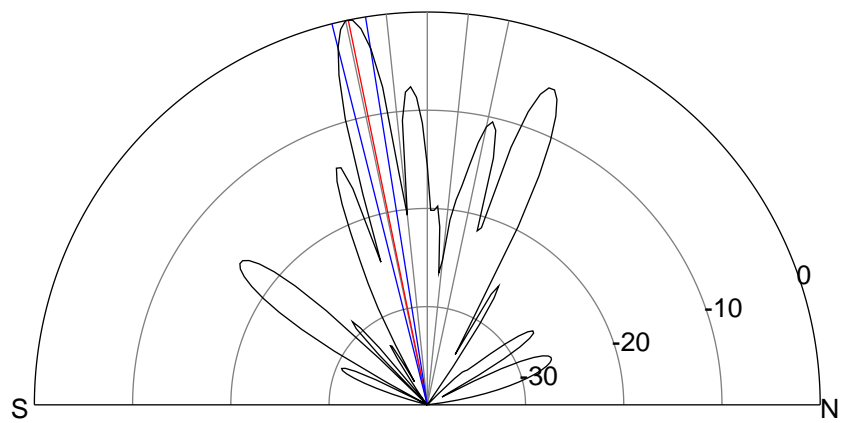
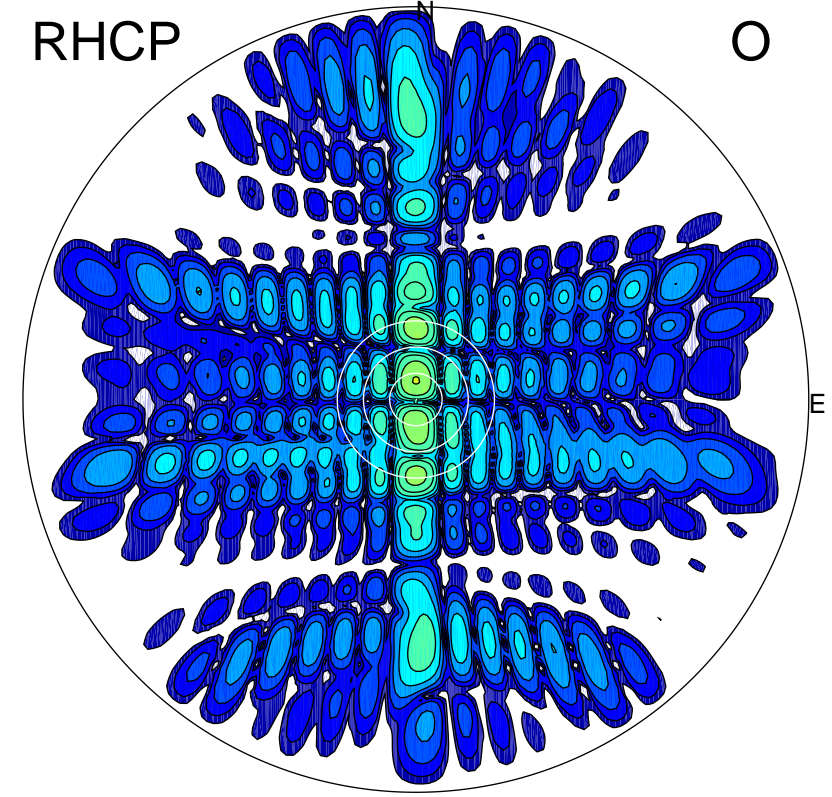
LHCP

X



RHCP

O



### ERP 561.3 MW

Peak gain 28.9 dBi at Az 180 Zen 12  
RHCP gain 2.1 dBi  
N-S peak 28.9 dBi at Zen -11.6  
N-S -3 dB beamwidth 5.0 deg.

### ERP 38.0 MW

Peak gain 17.2 dBi at Az 1 Zen 4  
LHCP gain 7.1 dBi  
N-S peak 17.2 dBi at Zen 4.3  
N-S -3 dB beamwidth 5.5 deg.