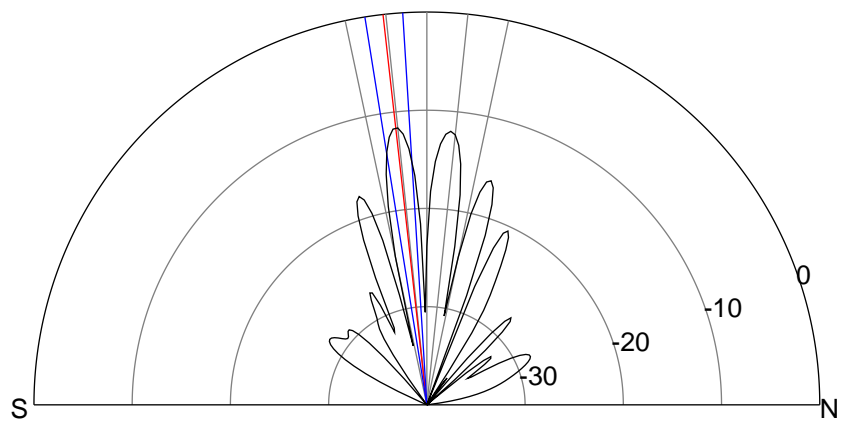
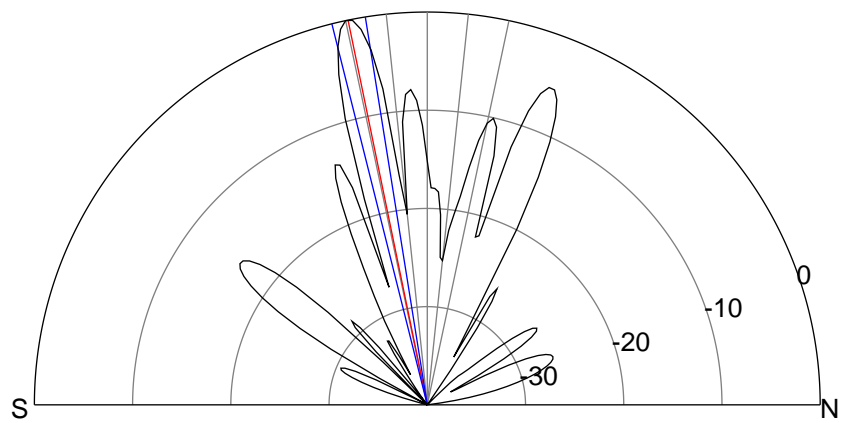
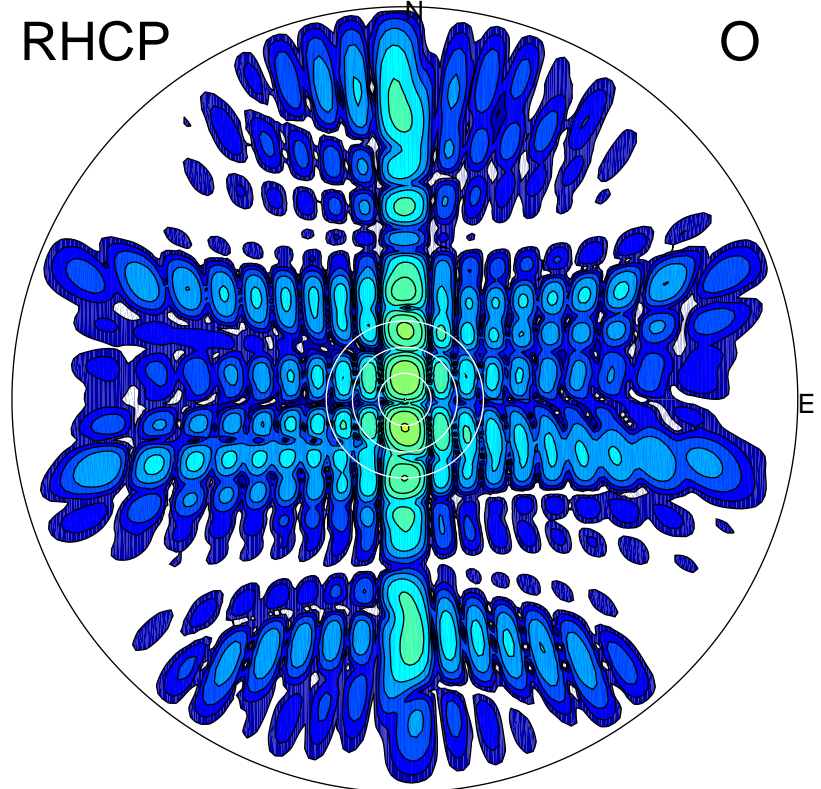
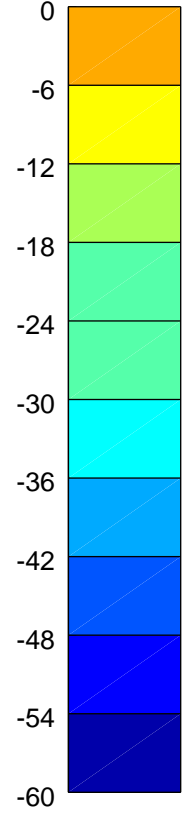
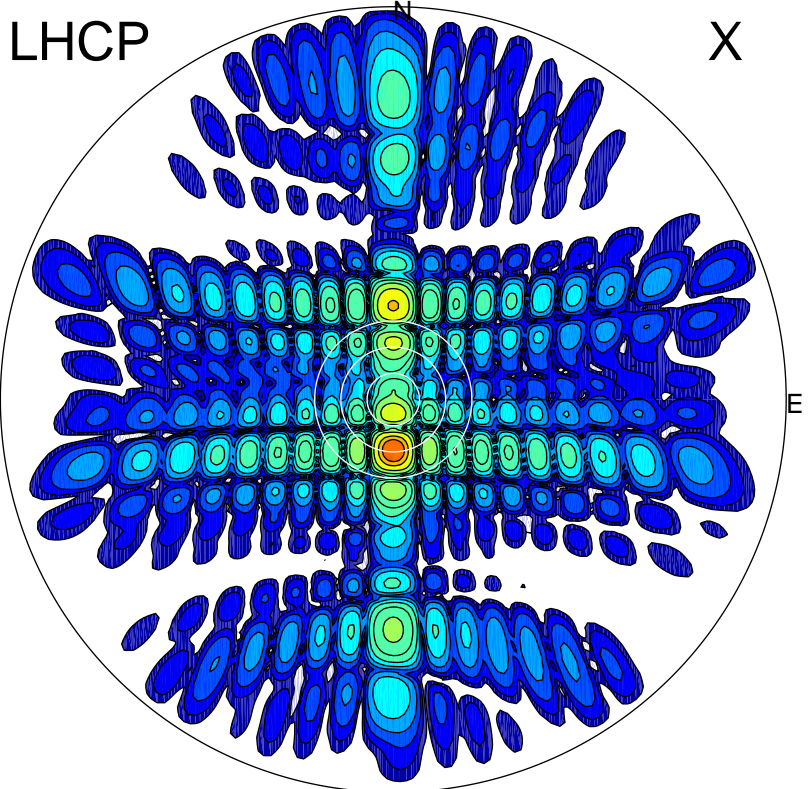


2015-10-30 11:43:37 A1 7.95300000 MHz 729.0 kW



### ERP 563.9 MW

Peak gain 28.9 dBi at Az 180 Zen 12  
RHCP gain 4.3 dBi  
N-S peak 28.9 dBi at Zen -11.6  
N-S -3 dB beamwidth 5.0 deg.

### ERP 38.6 MW

Peak gain 17.2 dBi at Az 180 Zen 6  
LHCP gain 8.4 dBi  
N-S peak 17.3 dBi at Zen -6.4  
N-S -3 dB beamwidth 5.6 deg.