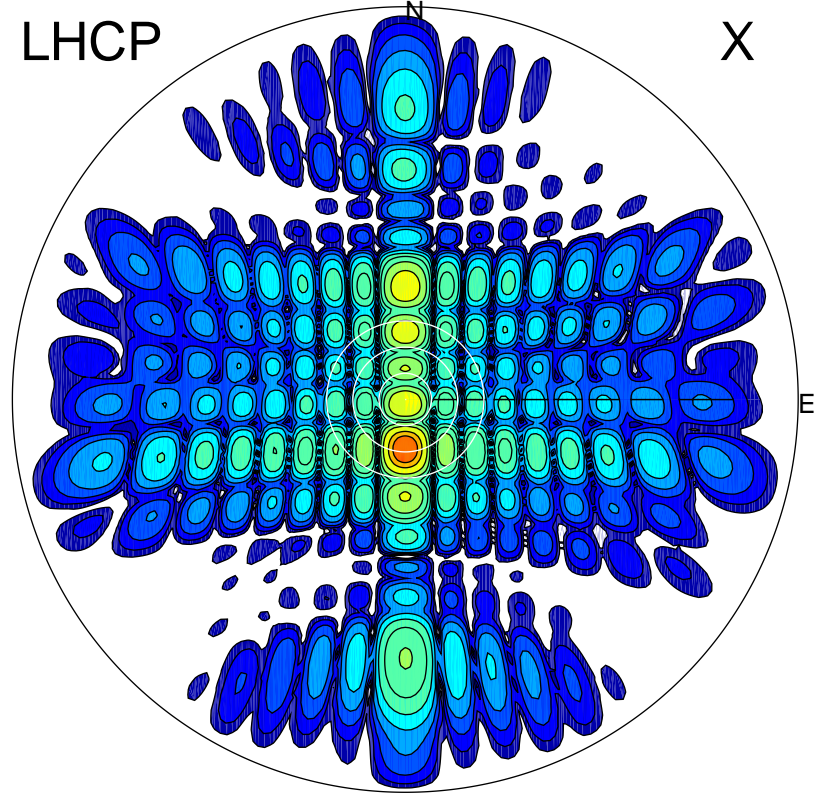


2015-10-30 10:12:00 A1 7.10000000 MHz 622.0 kW

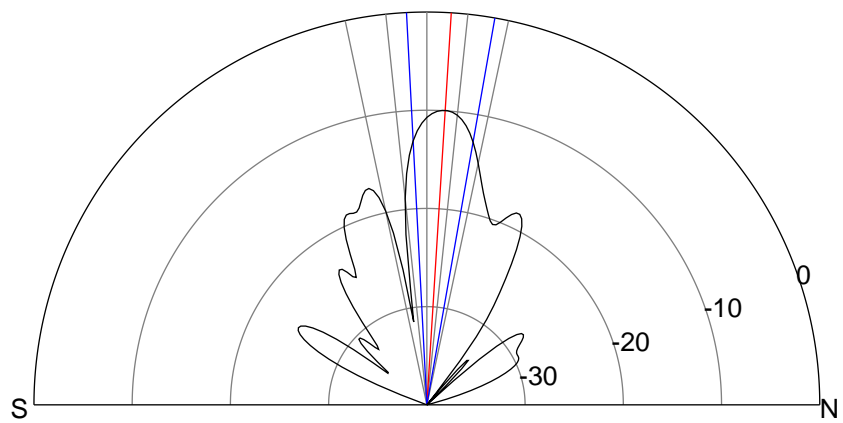
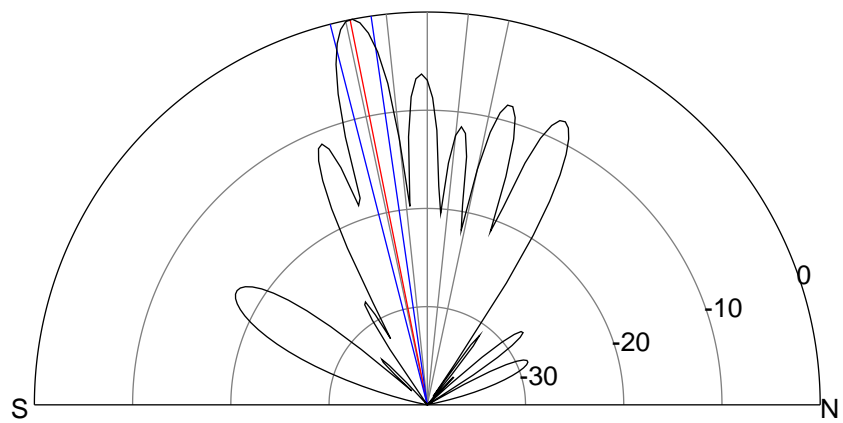
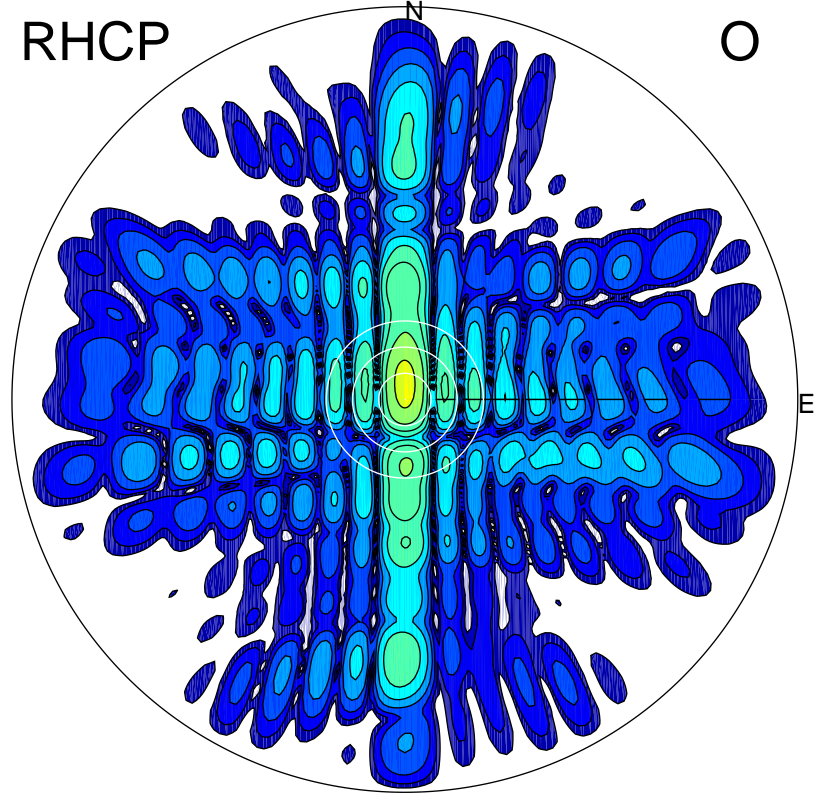
LHCP

X



RHCP

O



ERP 341.4 MW

Peak gain 27.4 dBi at Az 180 Zen 11
RHCP gain 5.2 dBi
N-S peak 27.4 dBi at Zen -11.3
N-S -3 dB beamwidth 6.1 deg.

ERP 34.4 MW

Peak gain 17.4 dBi at Az 359 Zen 4
LHCP gain 6.9 dBi
N-S peak 17.4 dBi at Zen 3.6
N-S -3 dB beamwidth 12.9 deg.