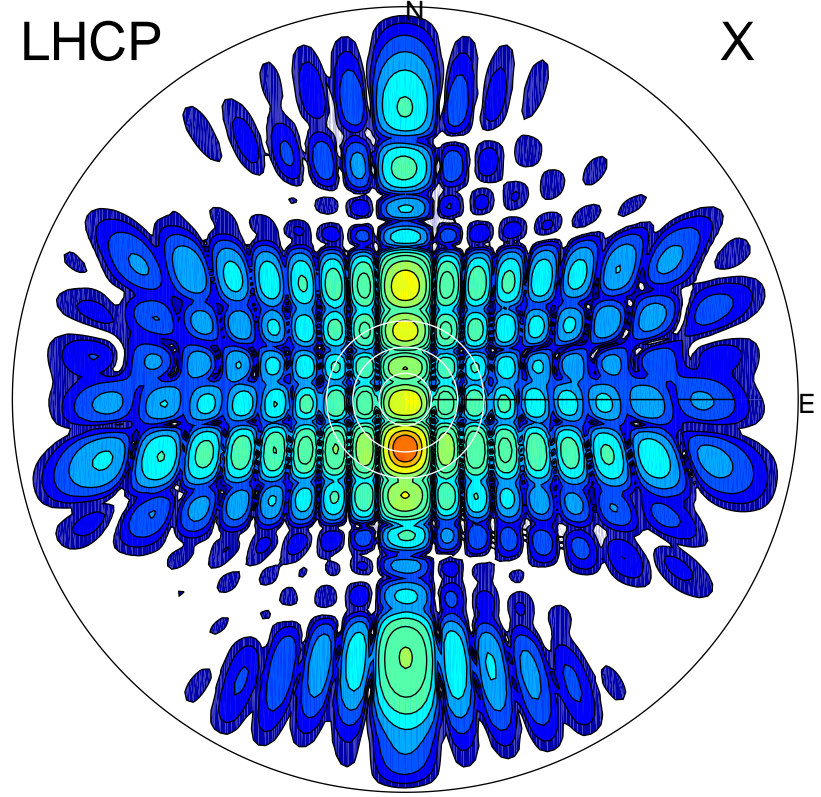


2015-10-30 10:10:00 A1 7.10000000 MHz 620.0 kW

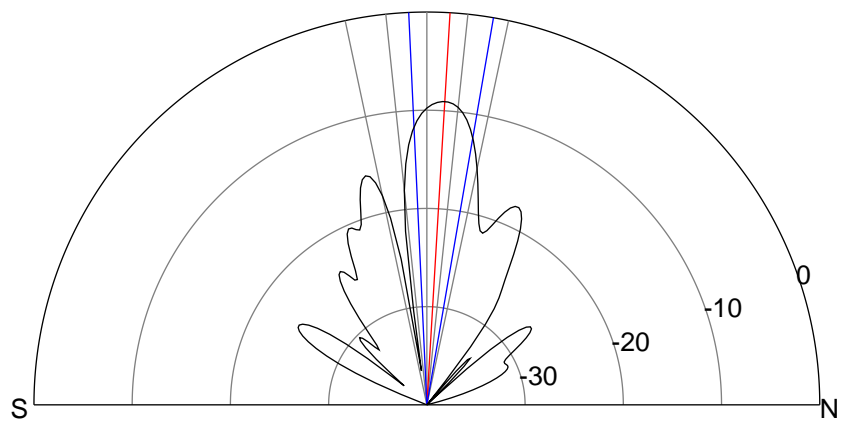
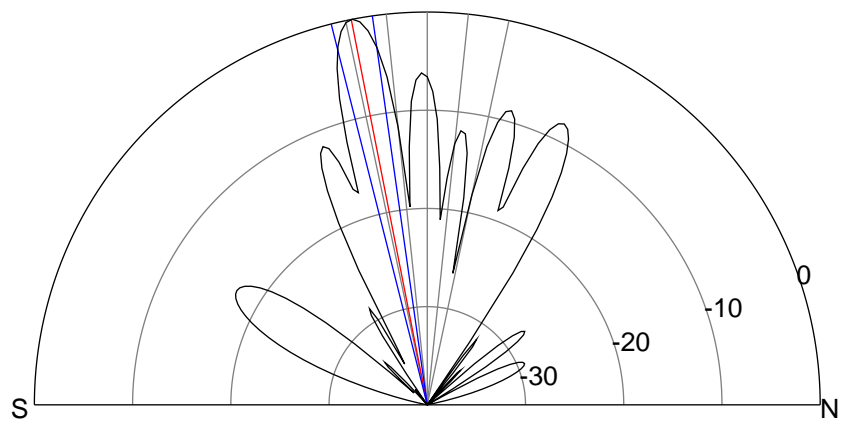
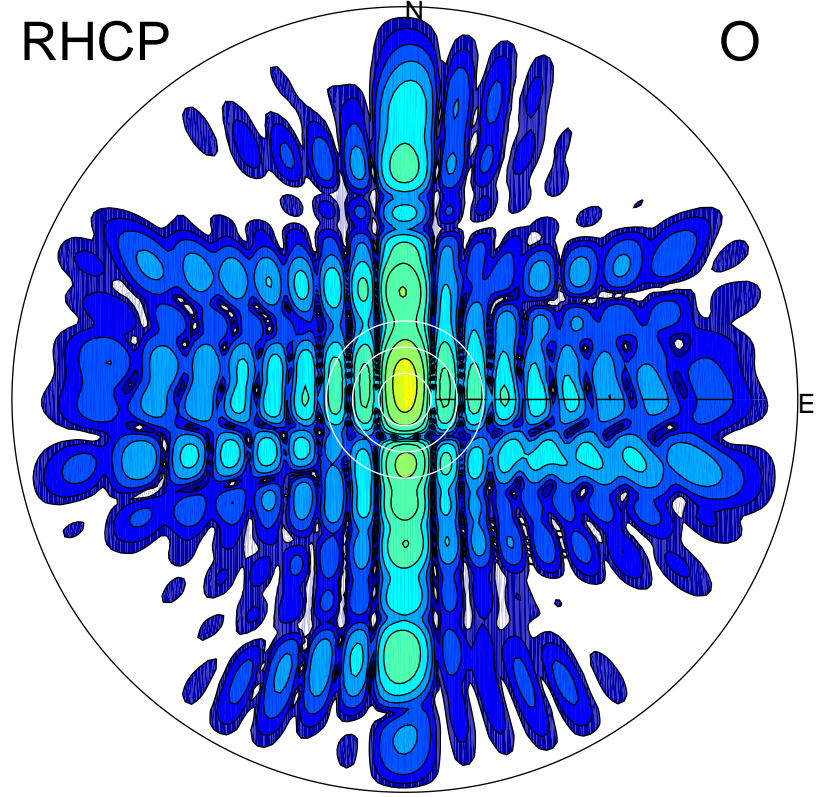
LHCP

X



RHCP

O



ERP 337.9 MW

Peak gain 27.4 dBi at Az 180 Zen 11
RHCP gain 6.7 dBi
N-S peak 27.4 dBi at Zen -11.2
N-S -3 dB beamwidth 6.1 deg.

ERP 41.8 MW

Peak gain 18.3 dBi at Az 0 Zen 3
LHCP gain 11.6 dBi
N-S peak 18.3 dBi at Zen 3.4
N-S -3 dB beamwidth 12.4 deg.