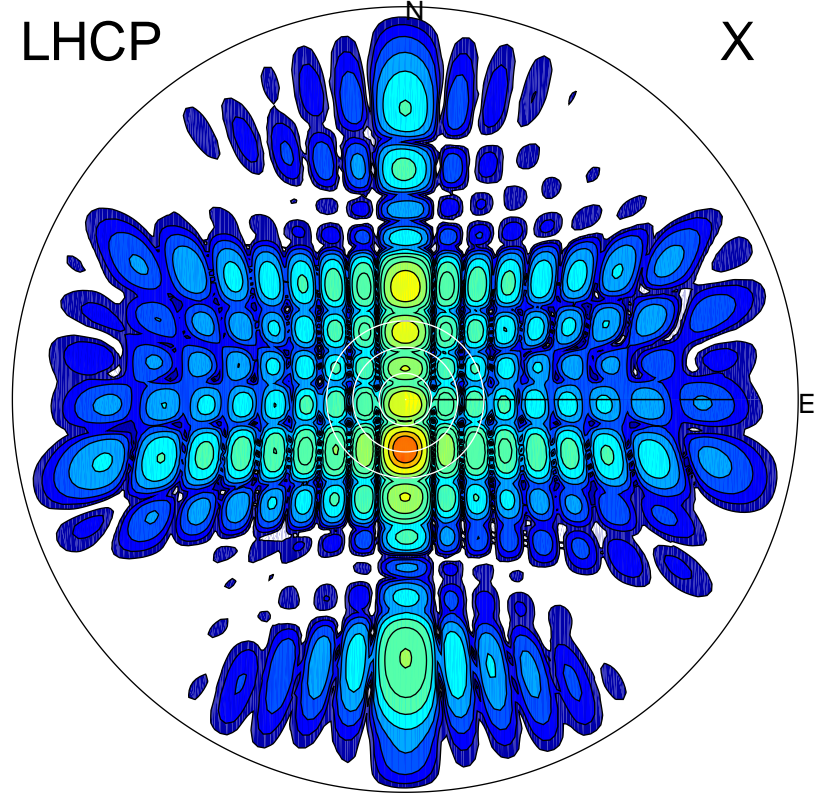


2015-10-30 10:08:00 A1 7.10000000 MHz 476.0 kW

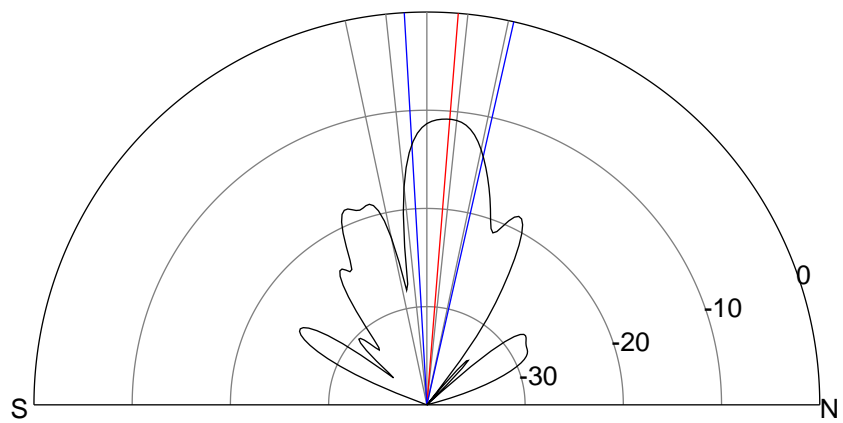
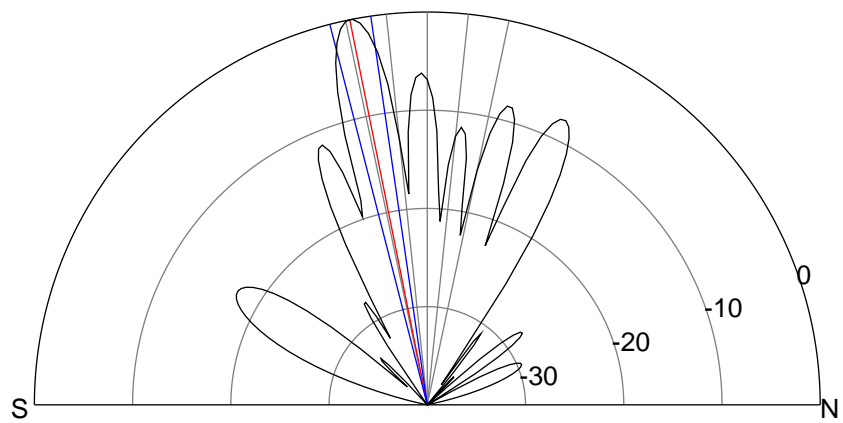
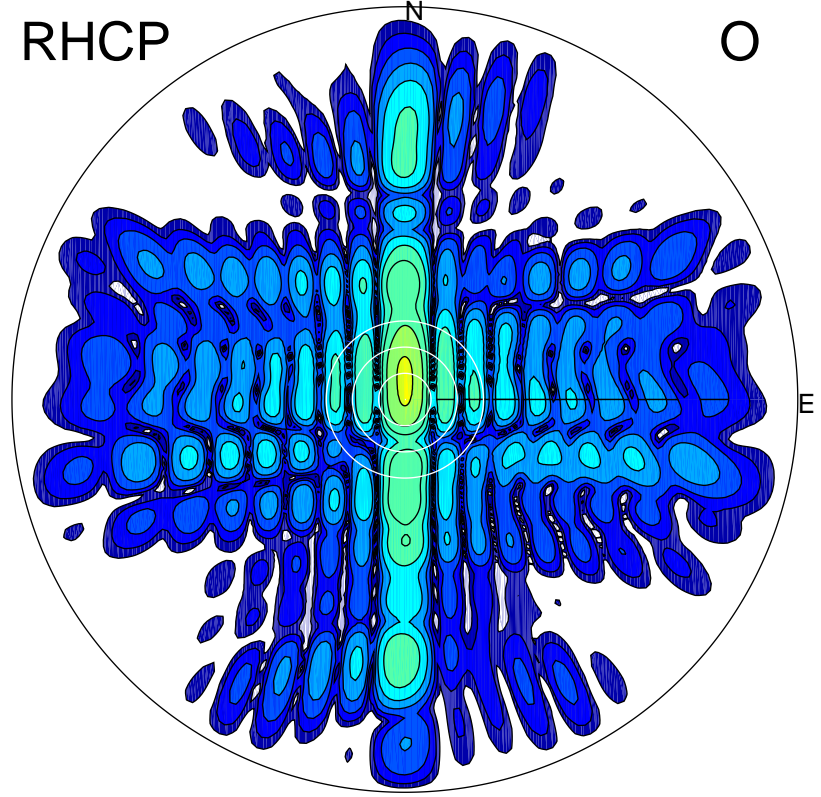
LHCP

X



RHCP

O



ERP 262.1 MW

Peak gain 27.4 dBi at Az 180 Zen 11
RHCP gain 2.2 dBi
N-S peak 27.5 dBi at Zen -11.4
N-S -3 dB beamwidth 6.1 deg.

ERP 21.7 MW

Peak gain 16.6 dBi at Az 359 Zen 5
LHCP gain 11.9 dBi
N-S peak 16.6 dBi at Zen 4.6
N-S -3 dB beamwidth 16.1 deg.