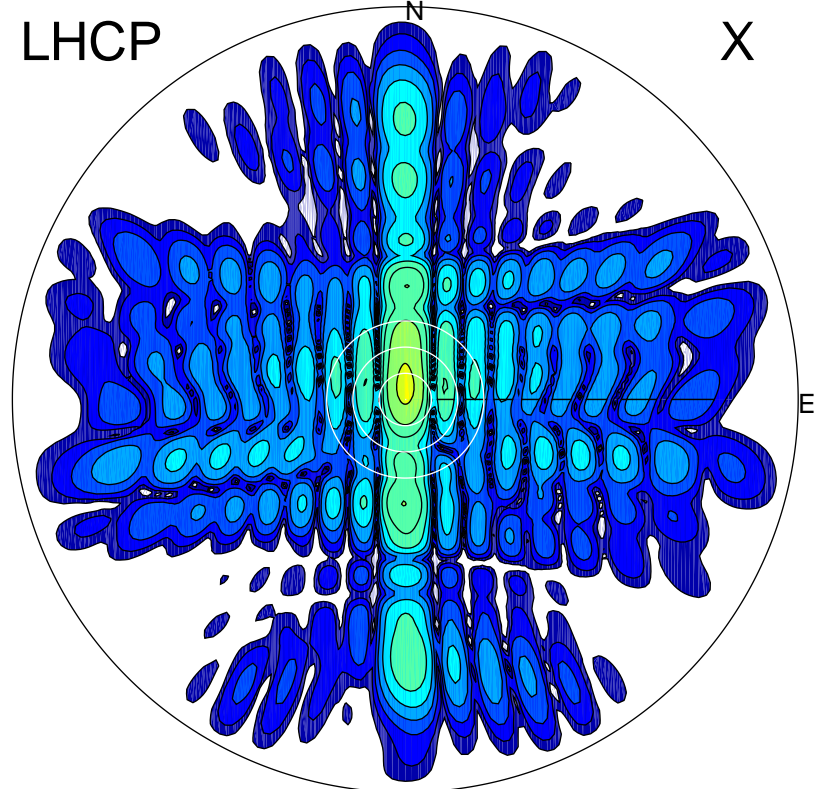


2015-10-30 09:49:50 A1 7.10000000 MHz 156.0 kW

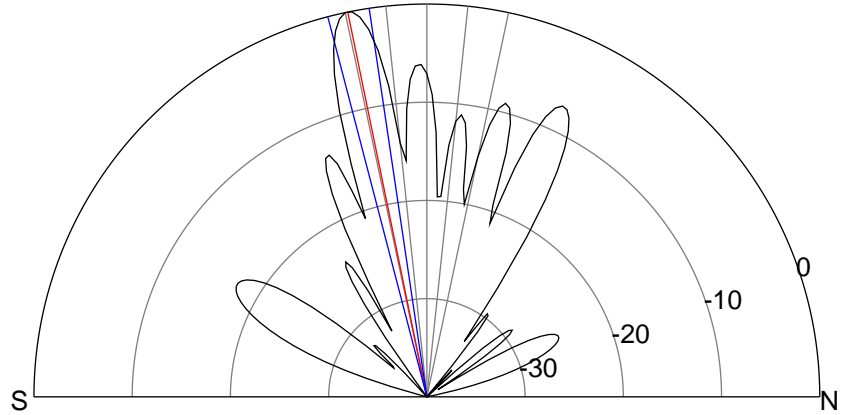
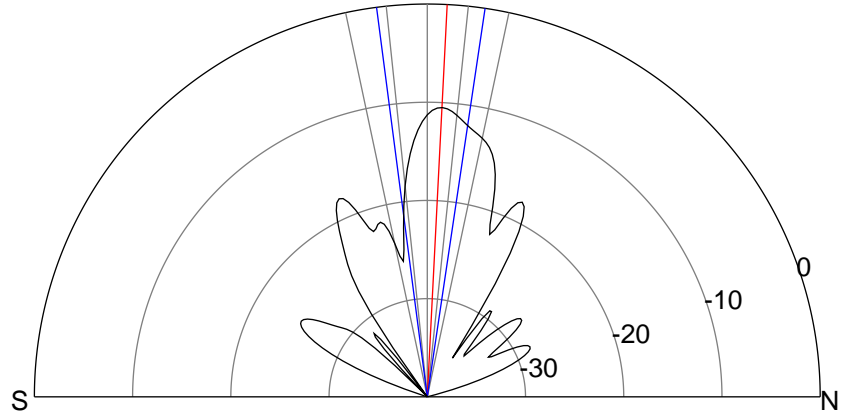
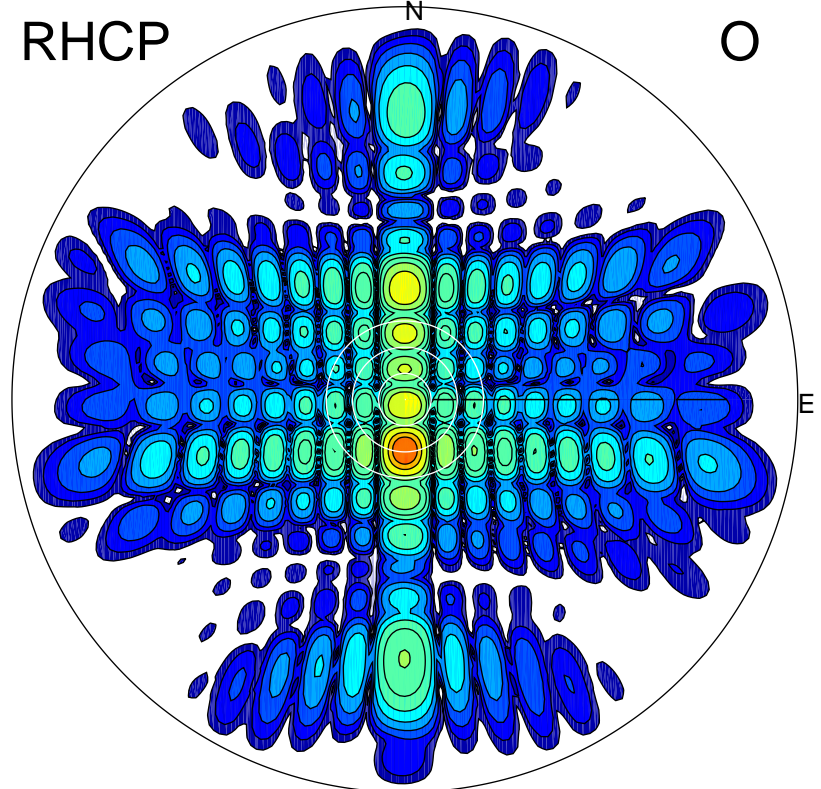
LHCP

X



RHCP

O



ERP 7.6 MW

Peak gain 16.9 dBi at Az 0 Zen 3
RHCP gain 7.8 dBi
N-S peak 16.9 dBi at Zen 2.9
N-S -3 dB beamwidth 15.9 deg.

ERP 85.6 MW

Peak gain 27.4 dBi at Az 180 Zen 12
LHCP gain 3.4 dBi
N-S peak 27.4 dBi at Zen -11.6
N-S -3 dB beamwidth 6.2 deg.