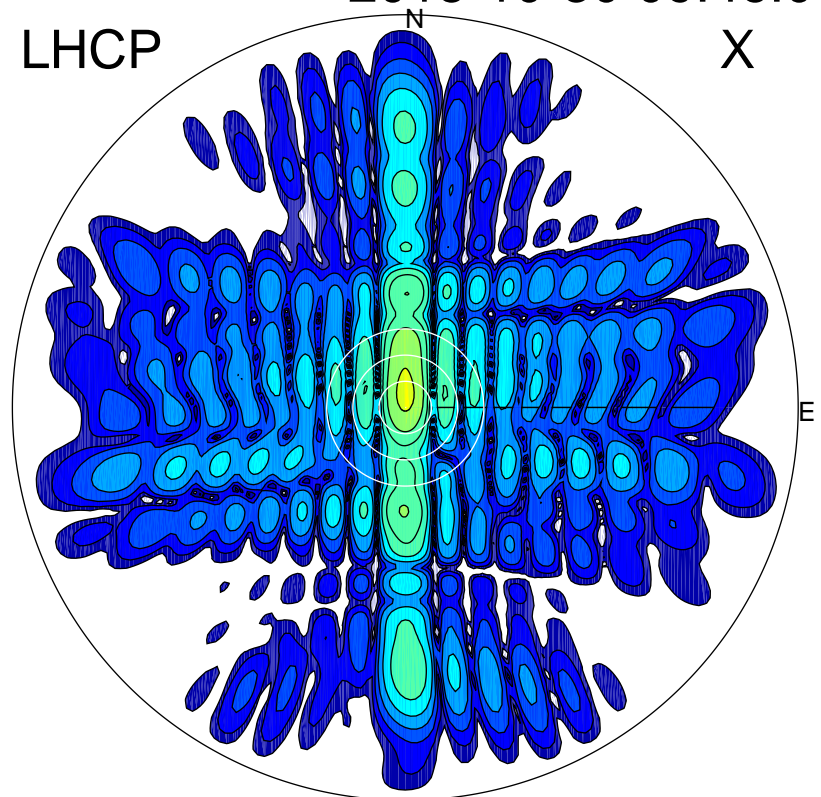


2015-10-30 09:46:00 A1 7.10000000 MHz 475.0 kW

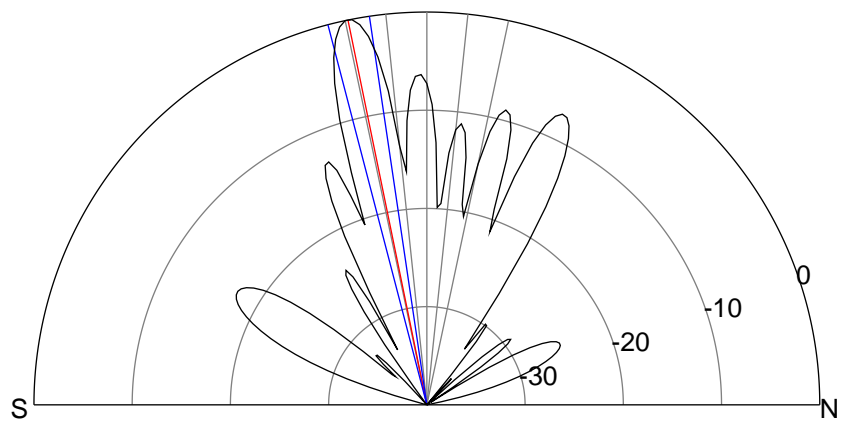
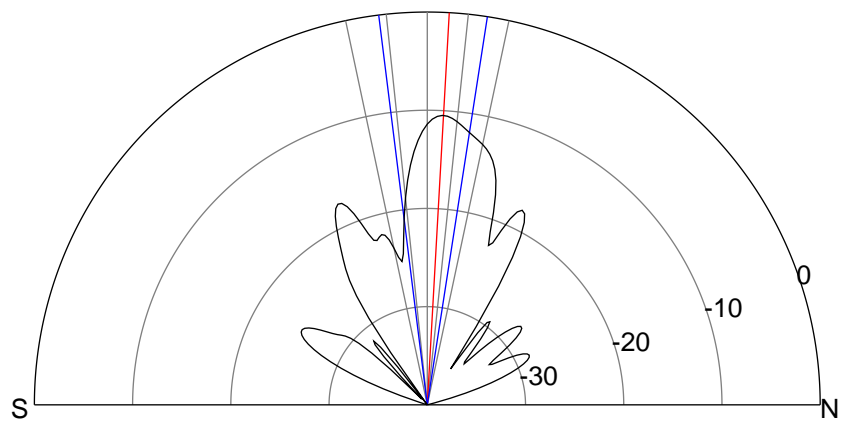
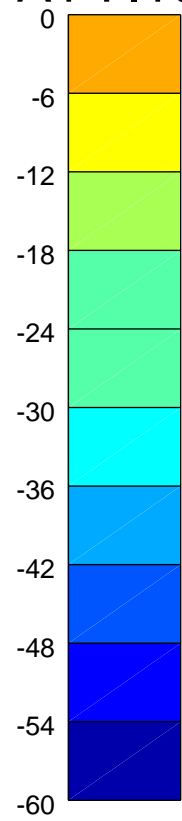
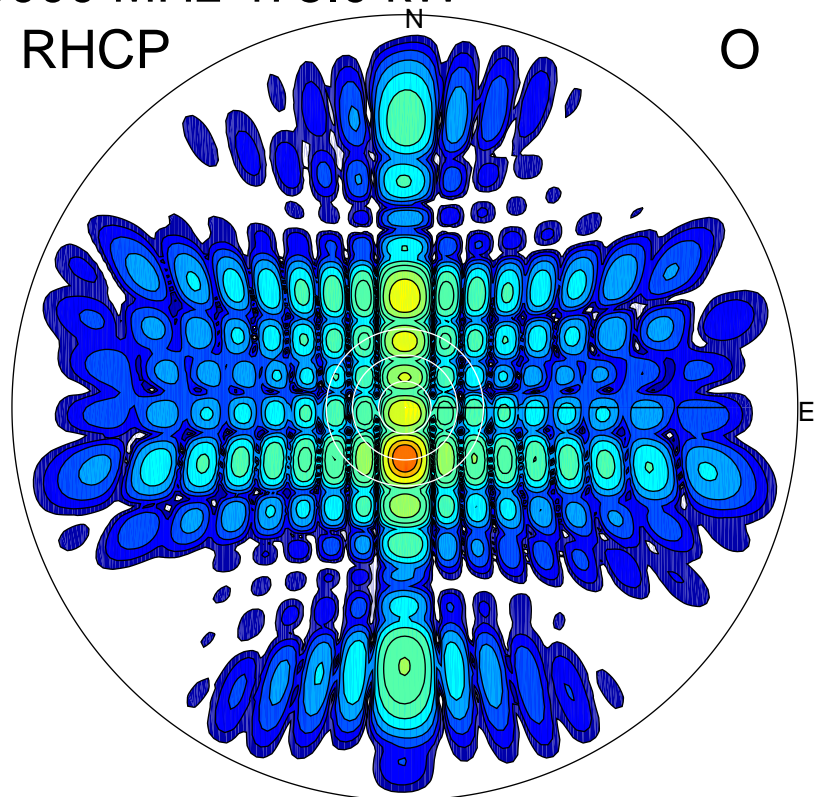
LHCP

X



RHCP

O



### ERP 23.3 MW

Peak gain 16.9 dBi at Az 0 Zen 3  
RHCP gain 7.5 dBi  
N-S peak 16.9 dBi at Zen 3.2  
N-S -3 dB beamwidth 15.9 deg.

### ERP 260.6 MW

Peak gain 27.4 dBi at Az 180 Zen 12  
LHCP gain 3.7 dBi  
N-S peak 27.4 dBi at Zen -11.6  
N-S -3 dB beamwidth 6.2 deg.