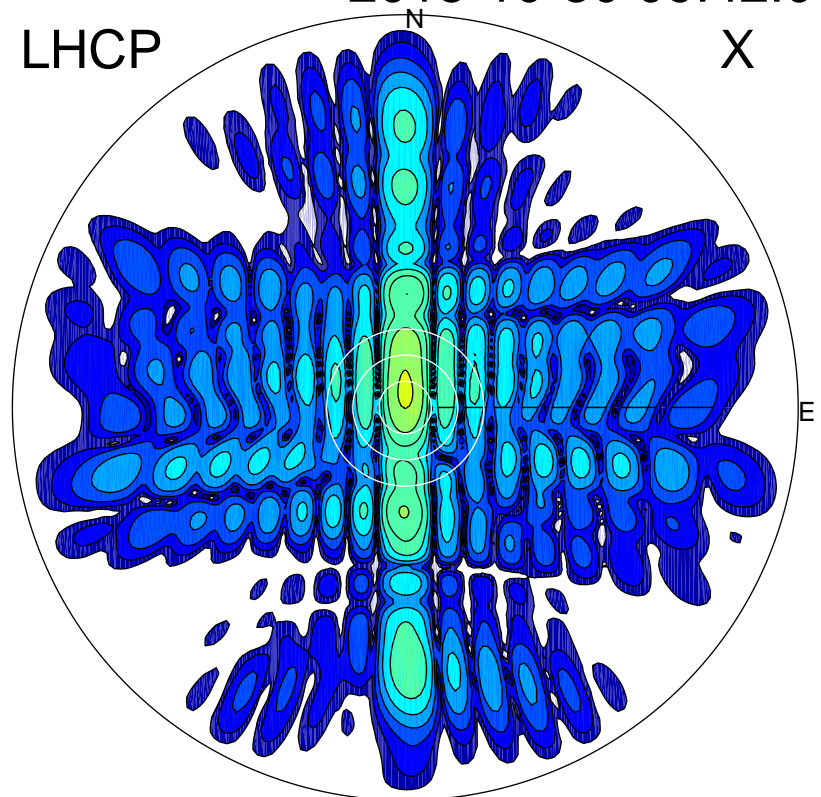


2015-10-30 09:42:00 A1 7.10000000 MHz 620.0 kW

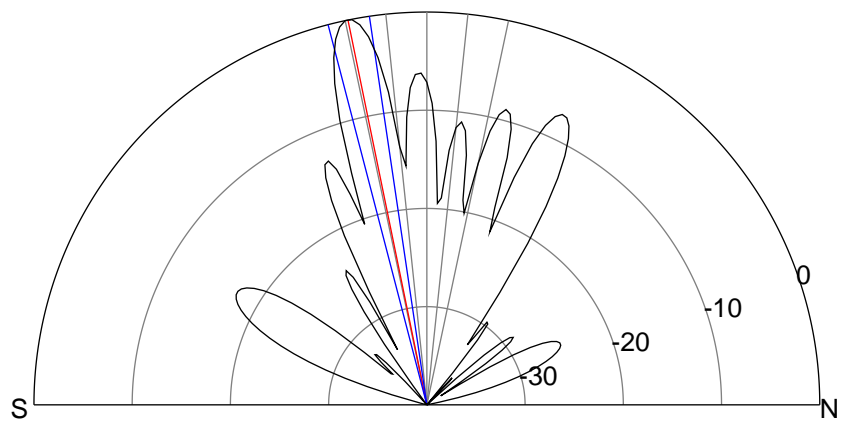
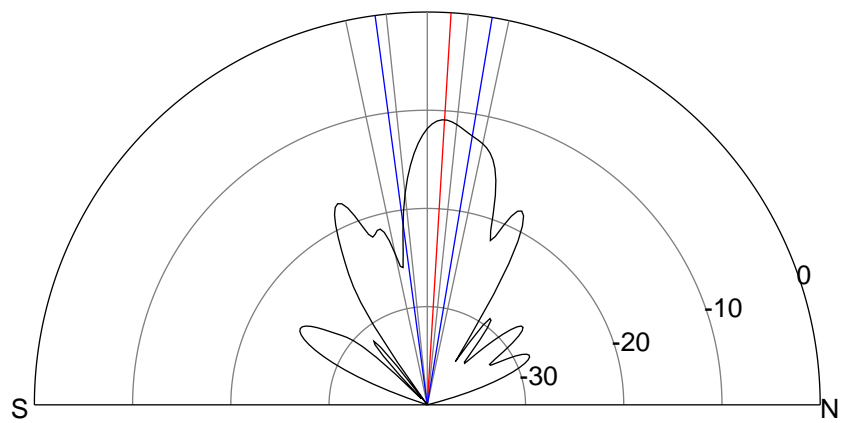
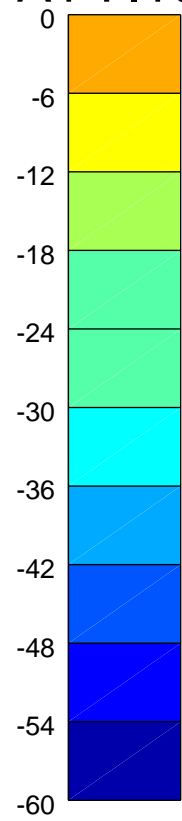
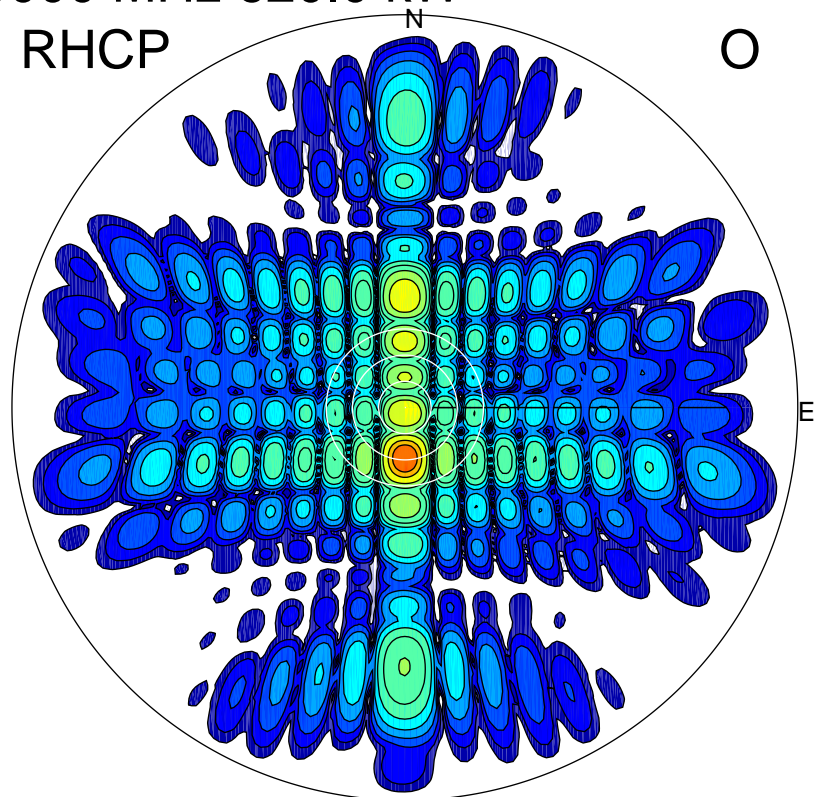
LHCP

X



RHCP

O



ERP 27.4 MW

Peak gain 16.5 dBi at Az 0 Zen 3
RHCP gain 7.9 dBi
N-S peak 16.5 dBi at Zen 3.5
N-S -3 dB beamwidth 17.1 deg.

ERP 340.4 MW

Peak gain 27.4 dBi at Az 180 Zen 12
LHCP gain 3.1 dBi
N-S peak 27.4 dBi at Zen -11.6
N-S -3 dB beamwidth 6.2 deg.