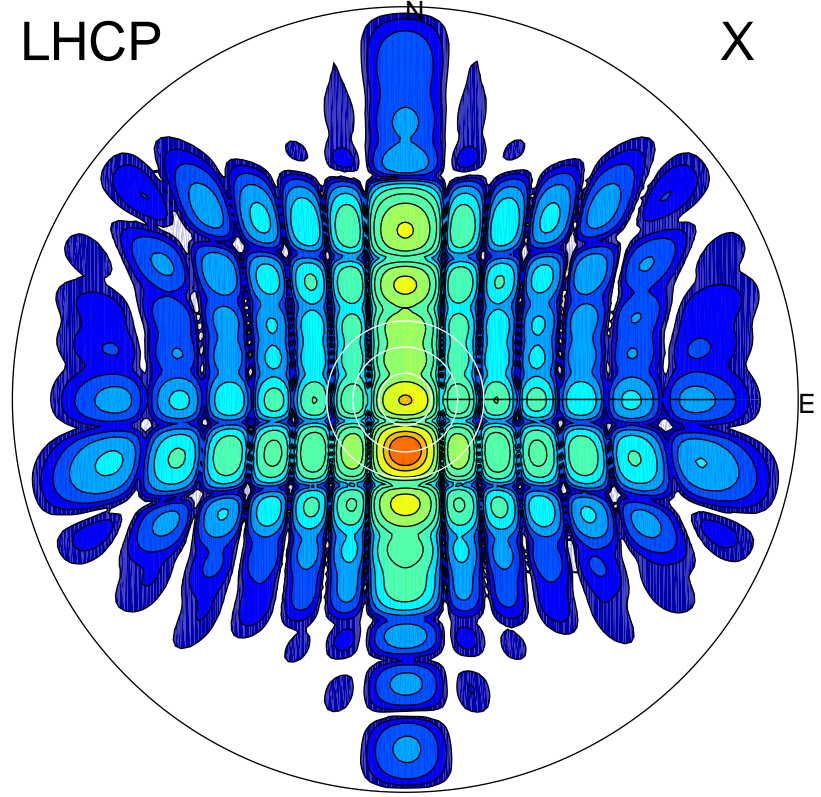


2015-10-29 14:29:24 A1 5.42300000 MHz 727.0 kW

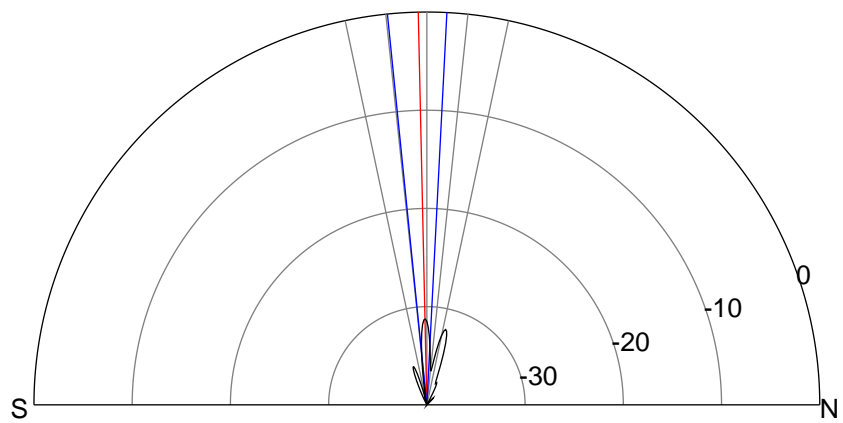
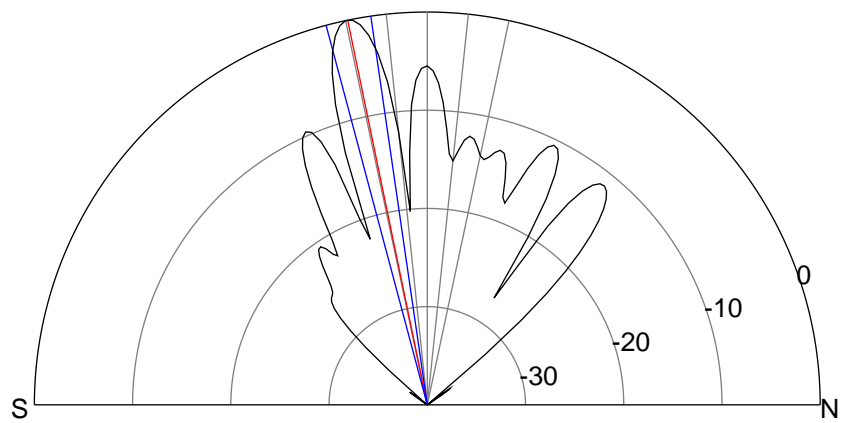
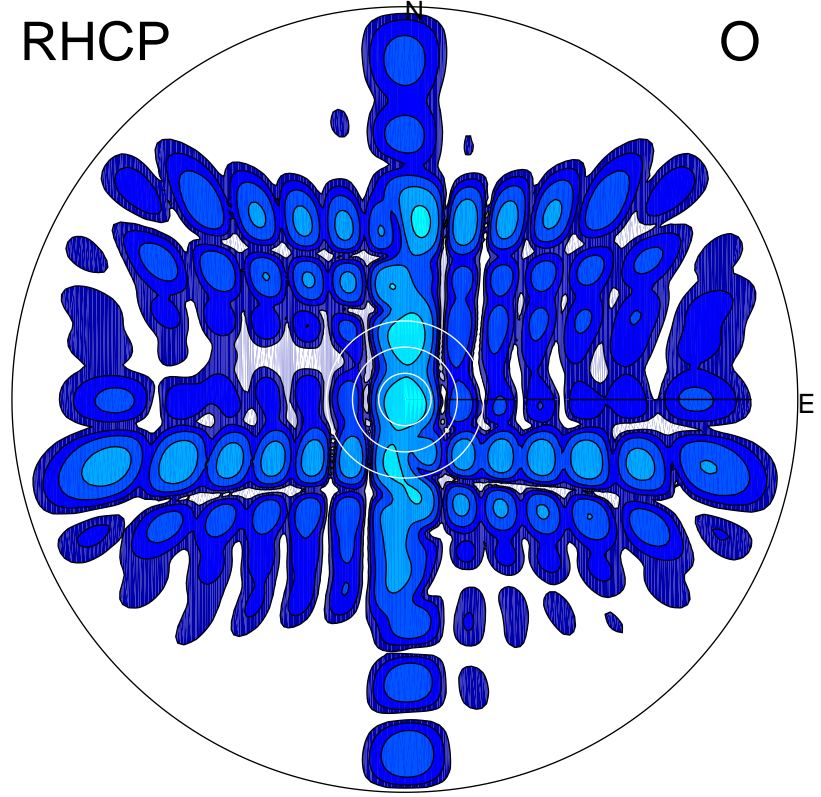
LHCP

X



RHCP

O



ERP 336.6 MW

Peak gain 26.7 dBi at Az 180 Zen 12
RHCP gain -13.0 dBi
N-S peak 26.7 dBi at Zen -11.7
N-S -3 dB beamwidth 6.7 deg.

ERP 0.3 MW

Peak gain -4.6 dBi at Az 171 Zen 1
LHCP gain 20.9 dBi
N-S peak -4.6 dBi at Zen -1.3
N-S -3 dB beamwidth 8.7 deg.