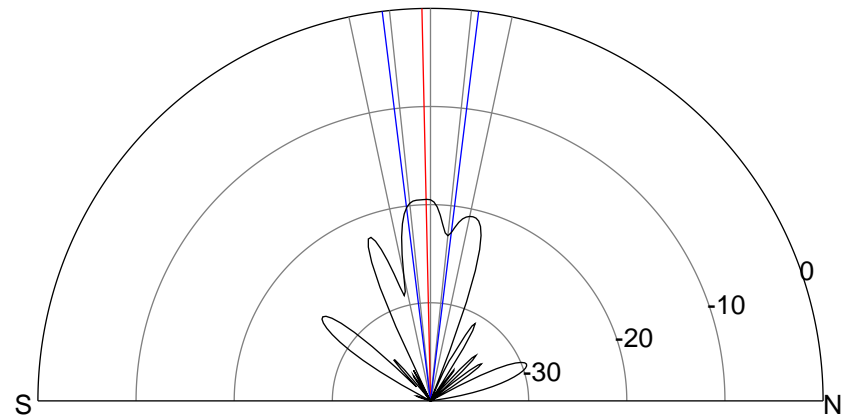
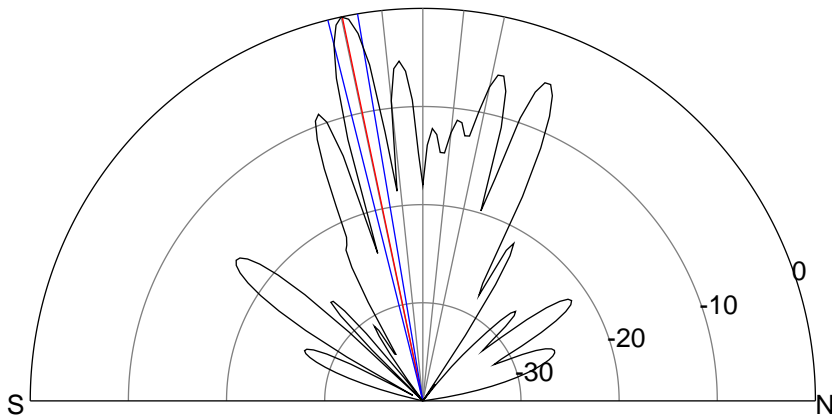
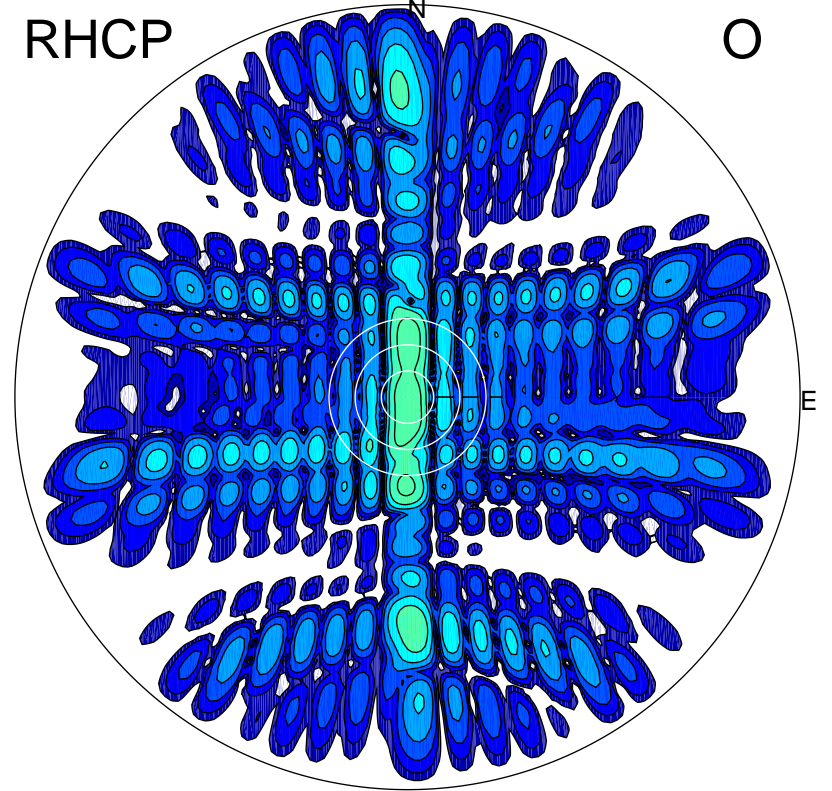
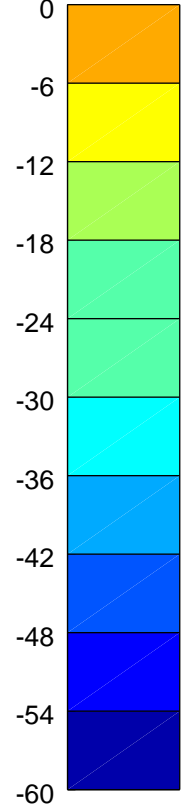
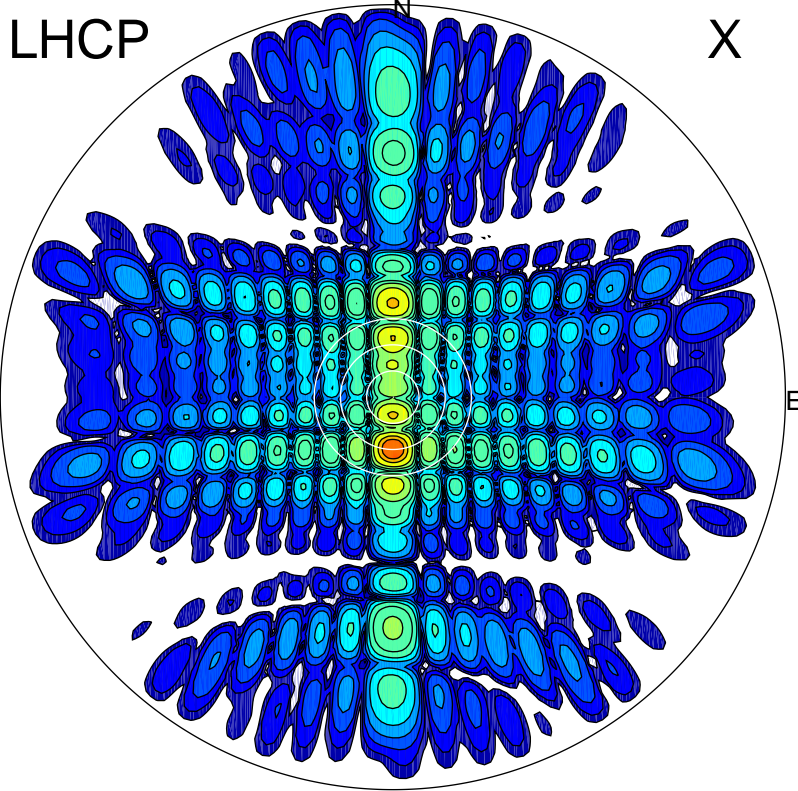


2015-10-29 13:59:00 A1 7.95300000 MHz 727.0 kW



### ERP 532.6 MW

Peak gain 28.6 dBi at Az 180 Zen 12  
RHCP gain 1.8 dBi  
N-S peak 28.7 dBi at Zen -11.9  
N-S -3 dB beamwidth 4.4 deg.

### ERP 6.0 MW

Peak gain 9.2 dBi at Az 178 Zen 1  
LHCP gain 13.8 dBi  
N-S peak 9.2 dBi at Zen -1.3  
N-S -3 dB beamwidth 14.1 deg.