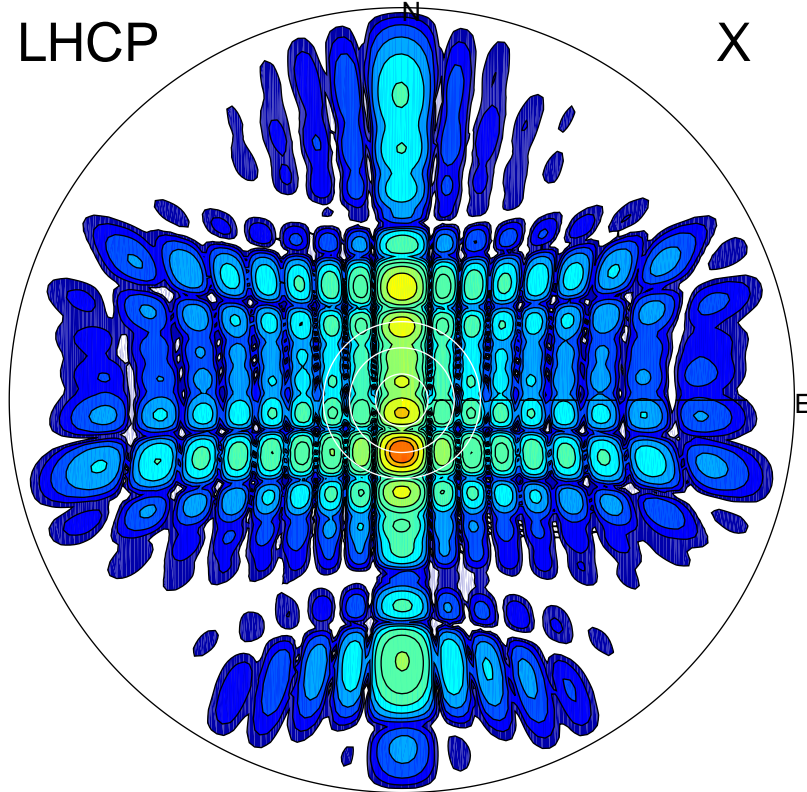


2015-10-29 11:41:11 A1 7.10000000 MHz 735.0 kW

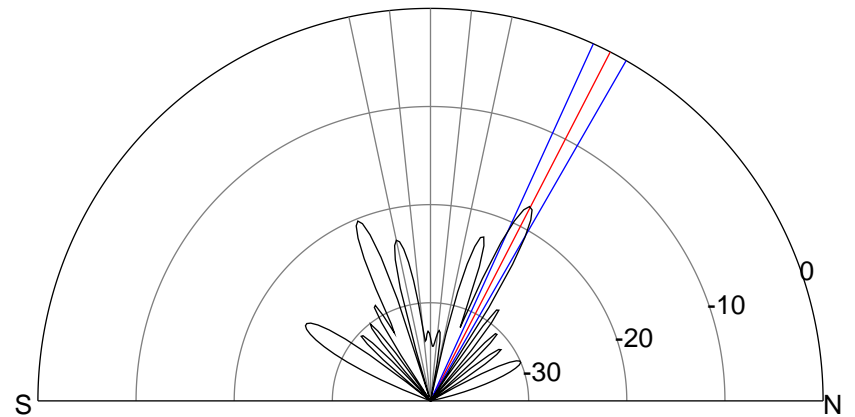
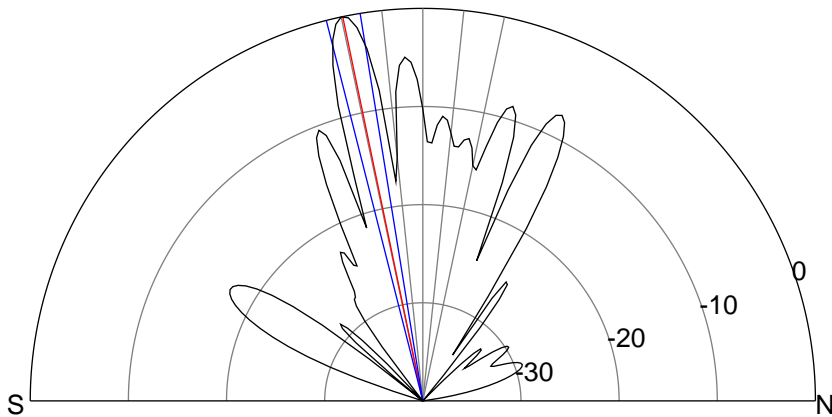
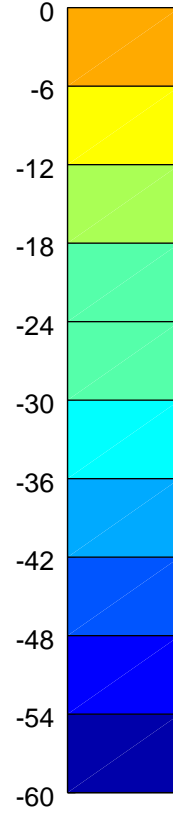
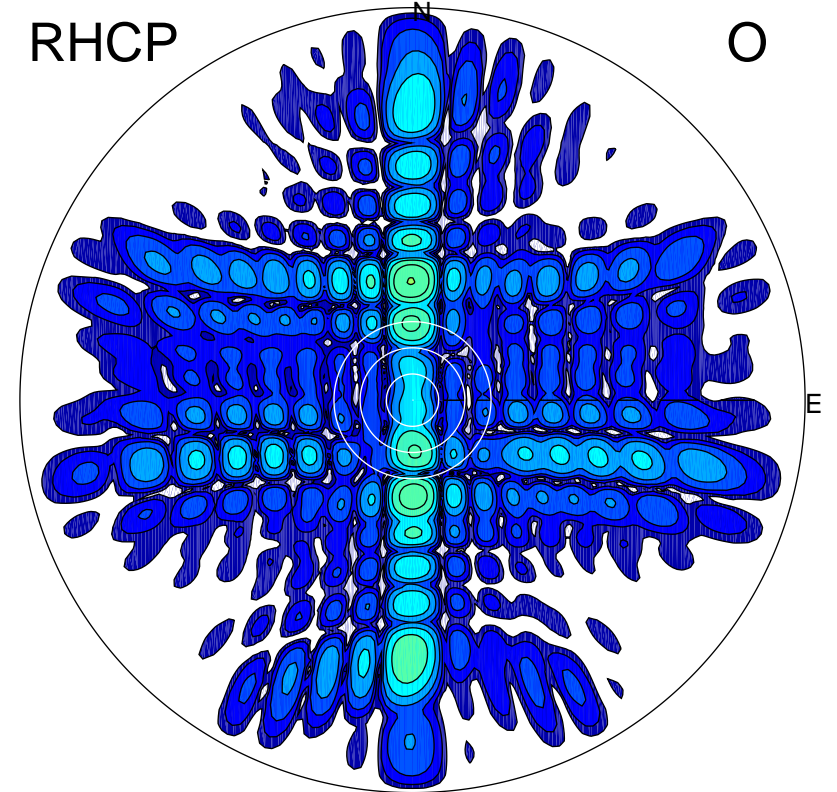
LHCP

X



RHCP

O



### ERP 497.3 MW

Peak gain 28.3 dBi at Az 180 Zen 12  
RHCP gain 5.0 dBi  
N-S peak 28.3 dBi at Zen -11.8  
N-S -3 dB beamwidth 5.0 deg.

### ERP 8.4 MW

Peak gain 10.6 dBi at Az 359 Zen 27  
LHCP gain 20.0 dBi  
N-S peak 10.6 dBi at Zen 27.3  
N-S -3 dB beamwidth 5.4 deg.