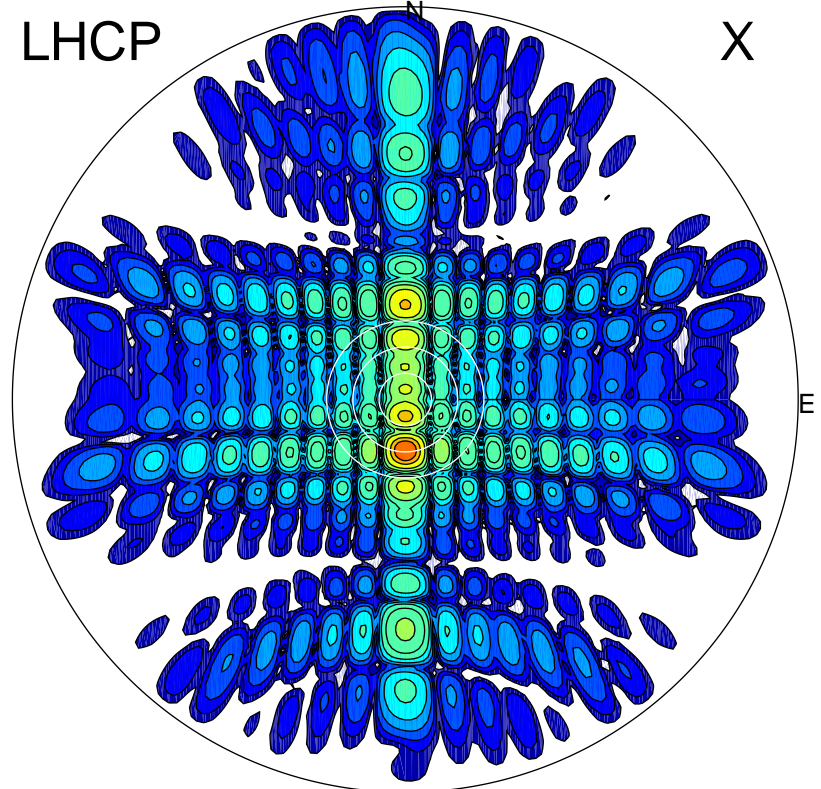


2015-10-29 11:37:44 A1 7.95300000 MHz 724.0 kW

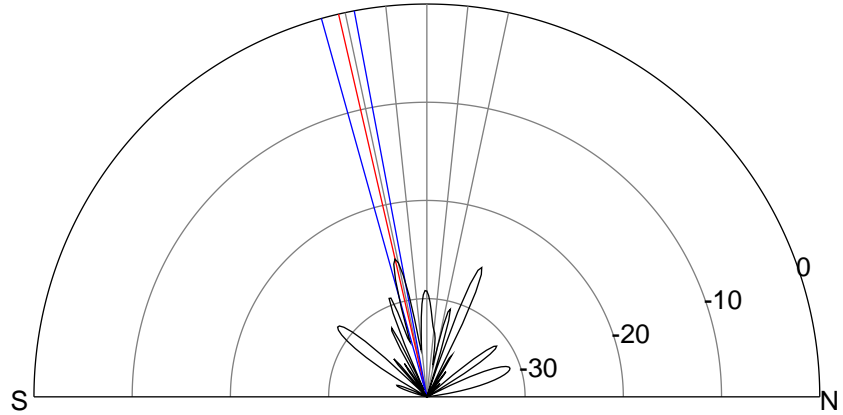
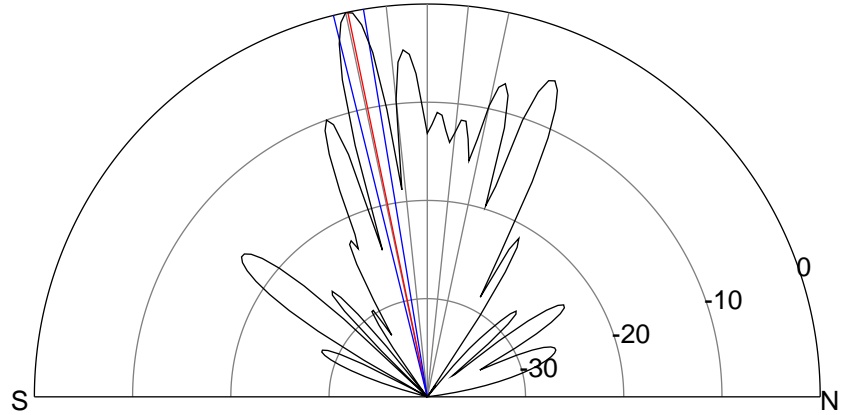
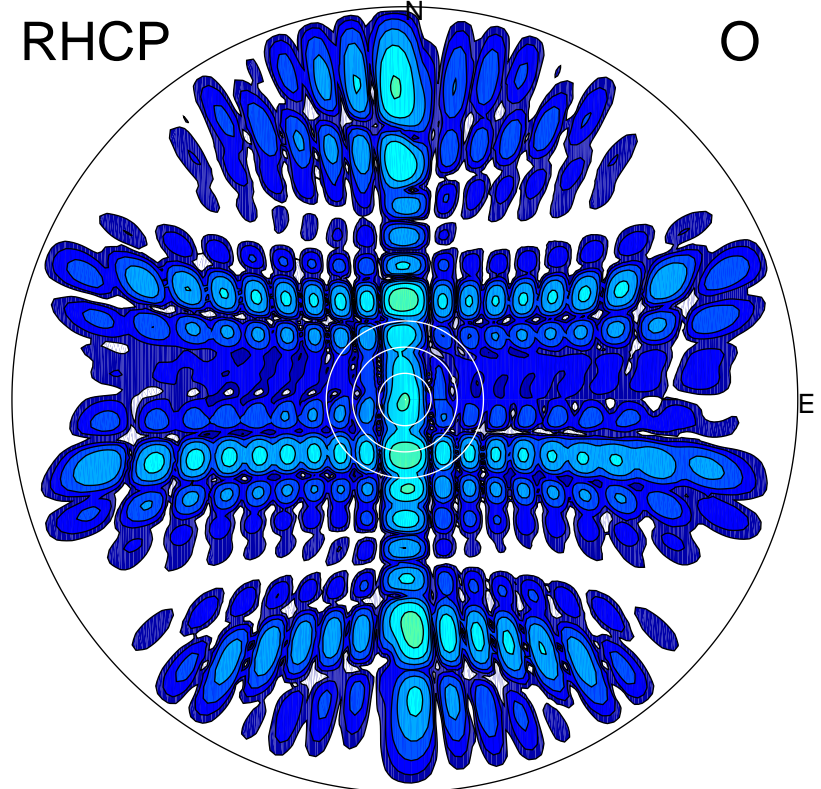
LHCP

X



RHCP

O



ERP 551.3 MW

Peak gain 28.8 dBi at Az 180 Zen 12
RHCP gain 2.8 dBi
N-S peak 28.9 dBi at Zen -11.7
N-S -3 dB beamwidth 4.5 deg.

ERP 1.5 MW

Peak gain 3.2 dBi at Az 178 Zen 13
LHCP gain 27.9 dBi
N-S peak 3.2 dBi at Zen -13.0
N-S -3 dB beamwidth 4.9 deg.