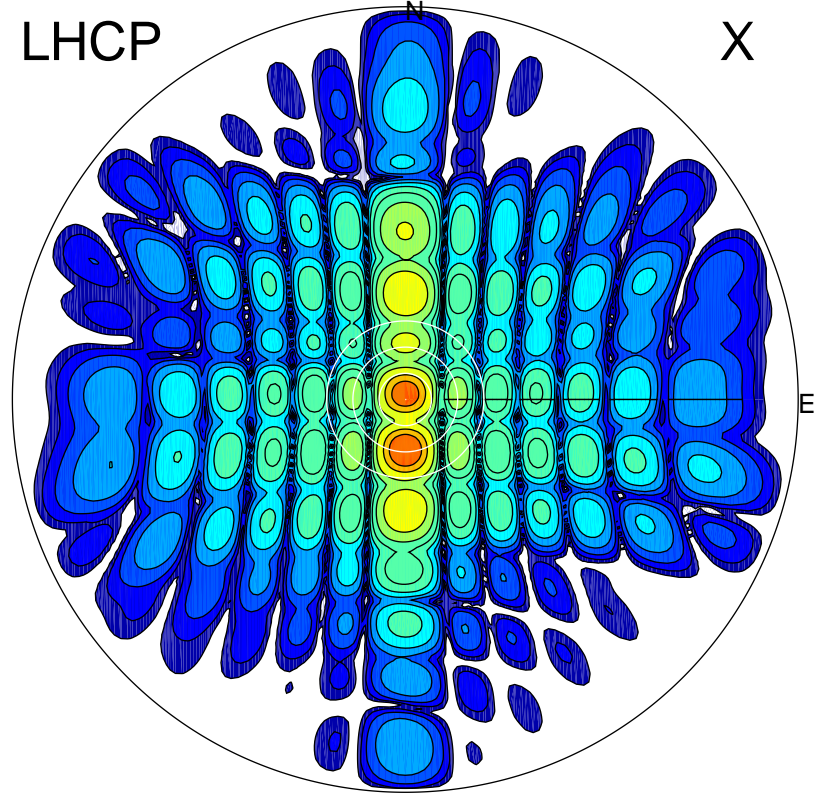


2015-10-28 15:49:02 A1 5.42300000 MHz 640.0 kW

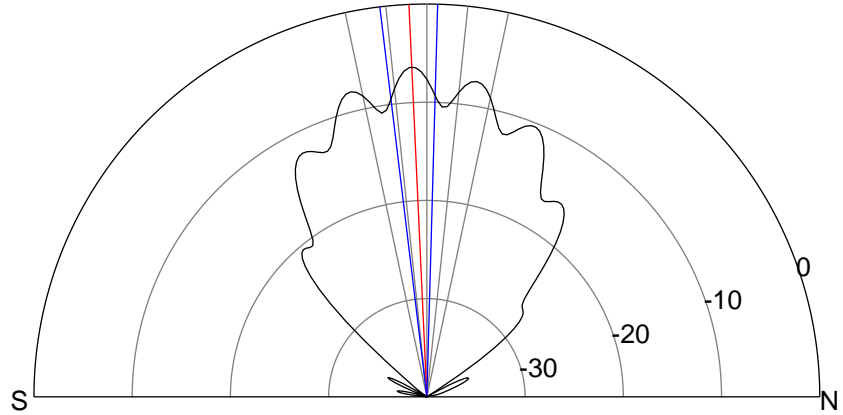
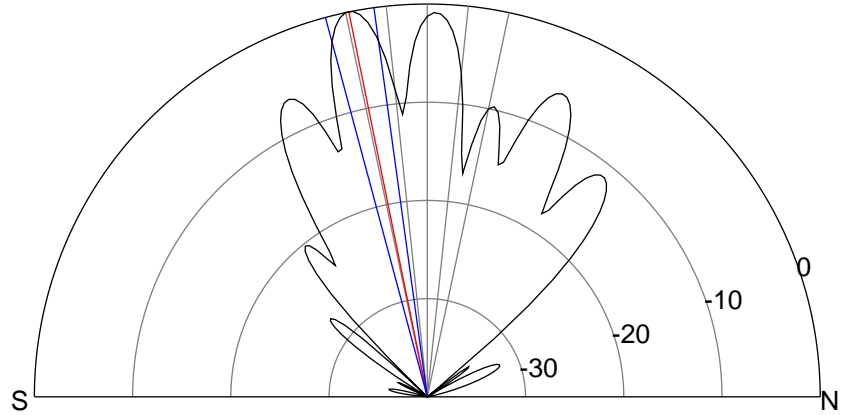
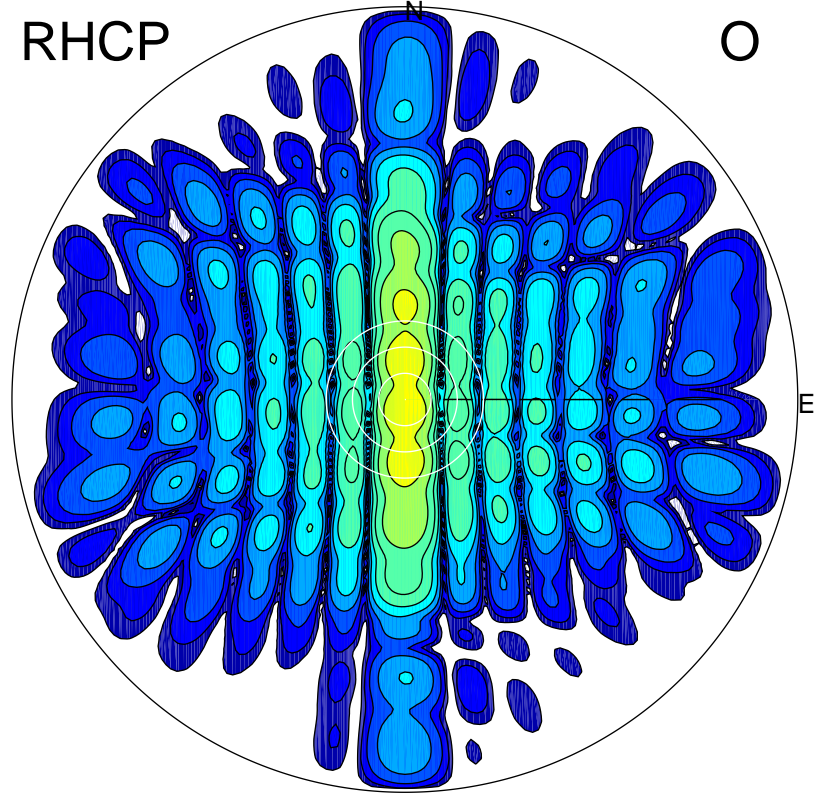
LHCP

X



RHCP

O



ERP 130.5 MW

Peak gain 23.1 dBi at Az 180 Zen 12
RHCP gain 14.4 dBi
N-S peak 23.1 dBi at Zen -11.5
N-S -3 dB beamwidth 7.2 deg.

ERP 29.9 MW

Peak gain 16.7 dBi at Az 178 Zen 3
LHCP gain 16.9 dBi
N-S peak 16.7 dBi at Zen -2.6
N-S -3 dB beamwidth 8.5 deg.