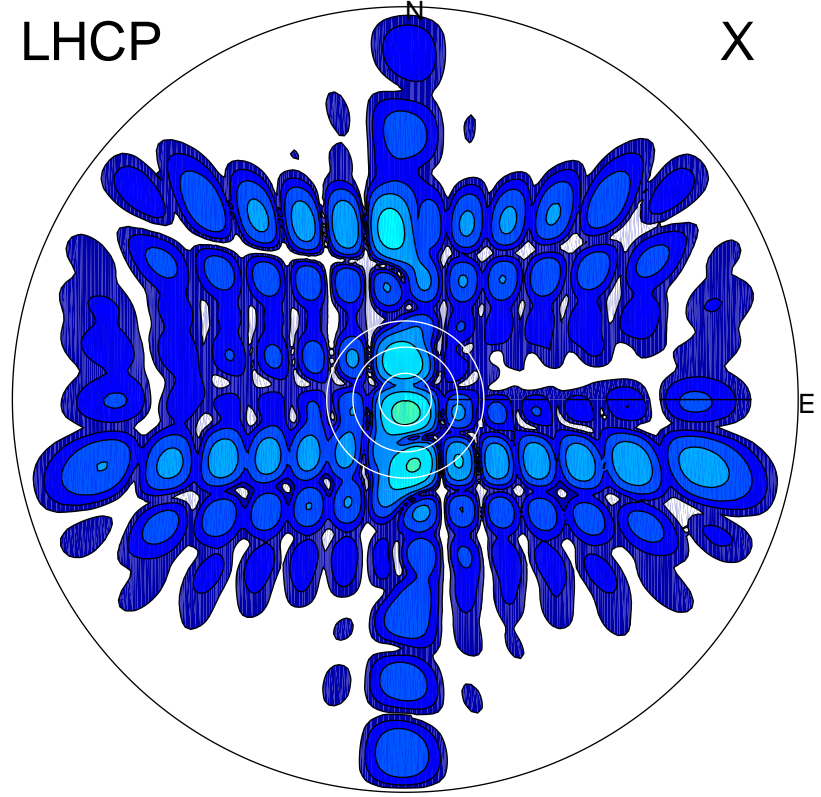


2015-10-28 15:31:30 A1 5.42300000 MHz 781.0 kW

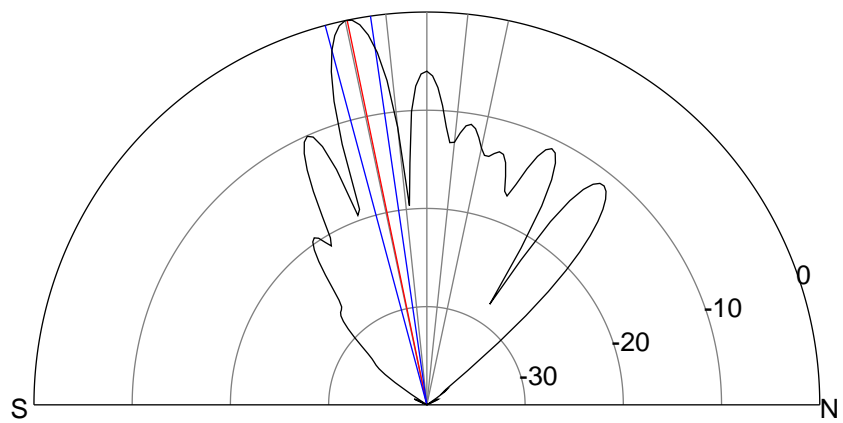
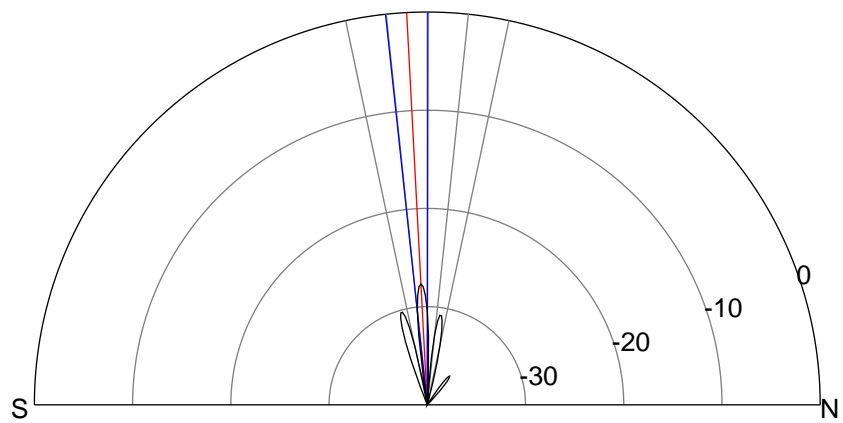
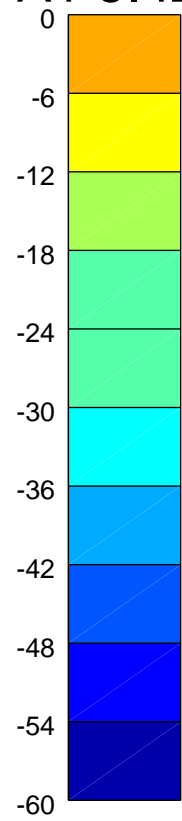
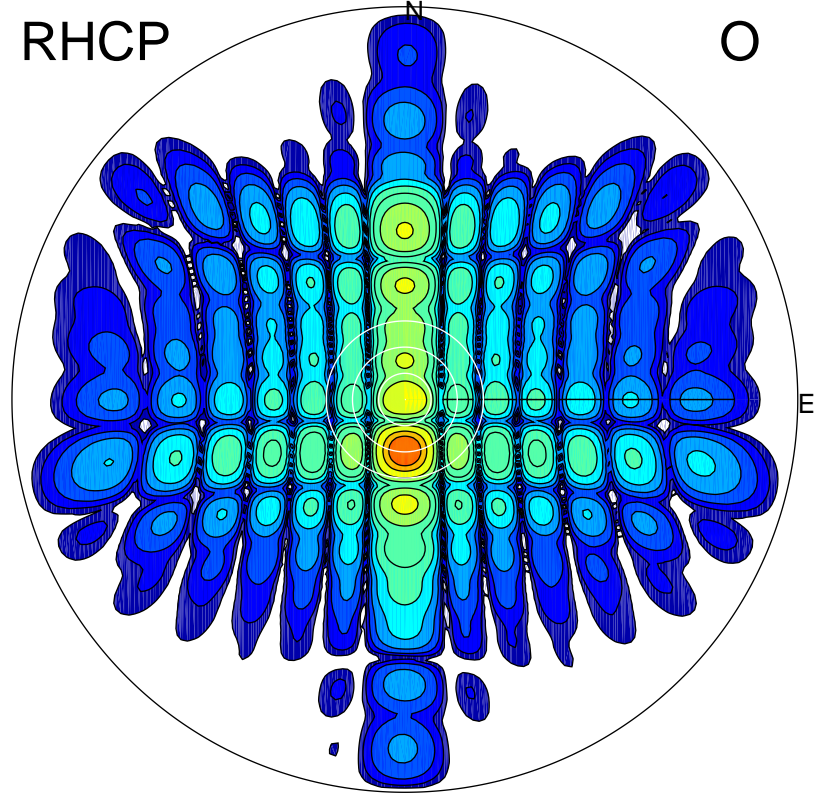
LHCP

X



RHCP

O



ERP 0.6 MW

Peak gain -1.0 dBi at Az 178 Zen 3
RHCP gain 16.6 dBi
N-S peak -1.0 dBi at Zen -3.0
N-S -3 dB beamwidth 6.2 deg.

ERP 362.4 MW

Peak gain 26.7 dBi at Az 180 Zen 12
LHCP gain -7.3 dBi
N-S peak 26.7 dBi at Zen -11.7
N-S -3 dB beamwidth 6.7 deg.