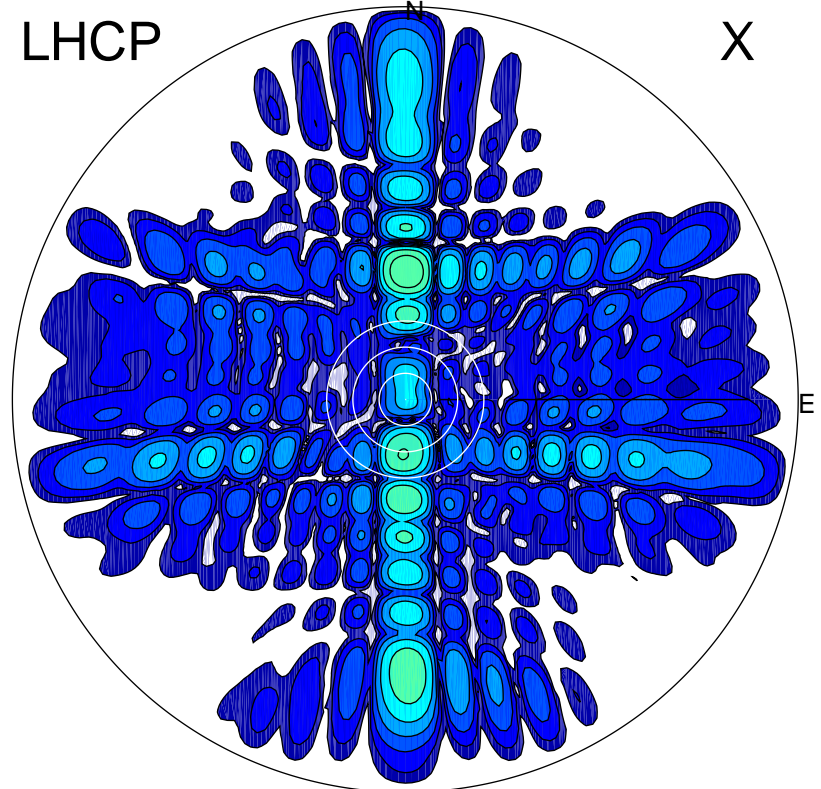


2015-10-28 14:02:00 A1 6.77000000 MHz 776.0 kW

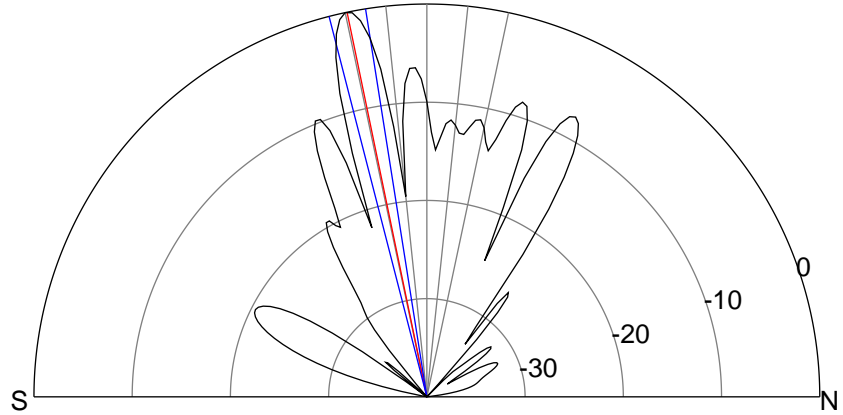
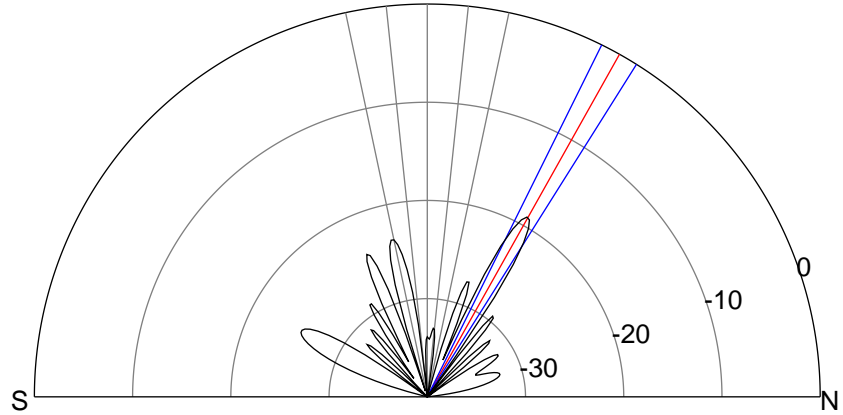
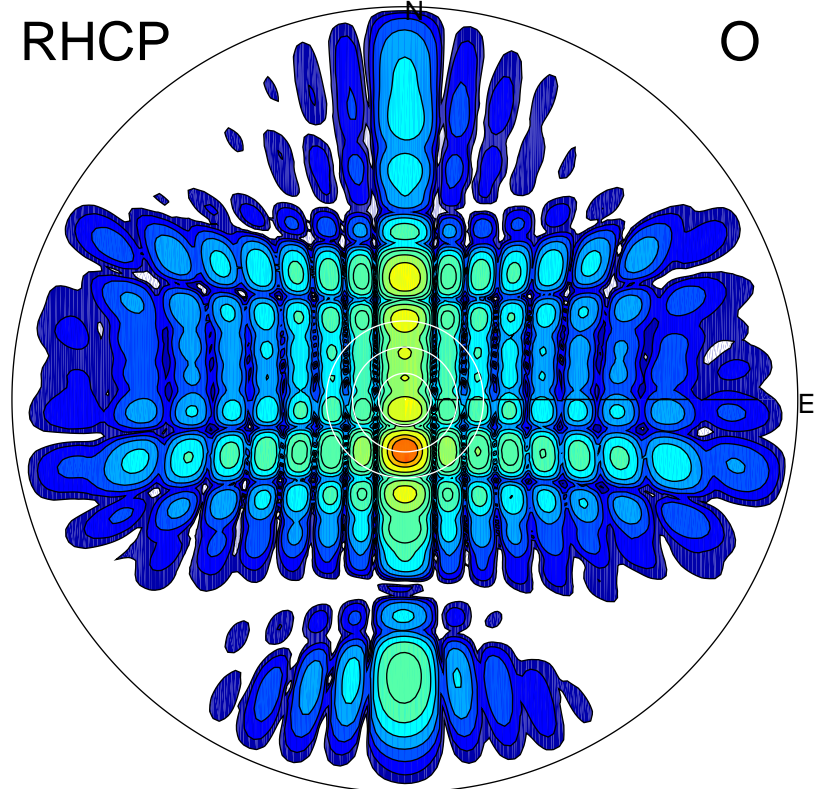
LHCP

X



RHCP

O



### ERP 6.1 MW

Peak gain 9.0 dBi at Az 1 Zen 29  
RHCP gain 19.7 dBi  
N-S peak 8.9 dBi at Zen 29.3  
N-S -3 dB beamwidth 5.8 deg.

### ERP 488.2 MW

Peak gain 28.0 dBi at Az 180 Zen 12  
LHCP gain 4.3 dBi  
N-S peak 28.0 dBi at Zen -11.7  
N-S -3 dB beamwidth 5.4 deg.