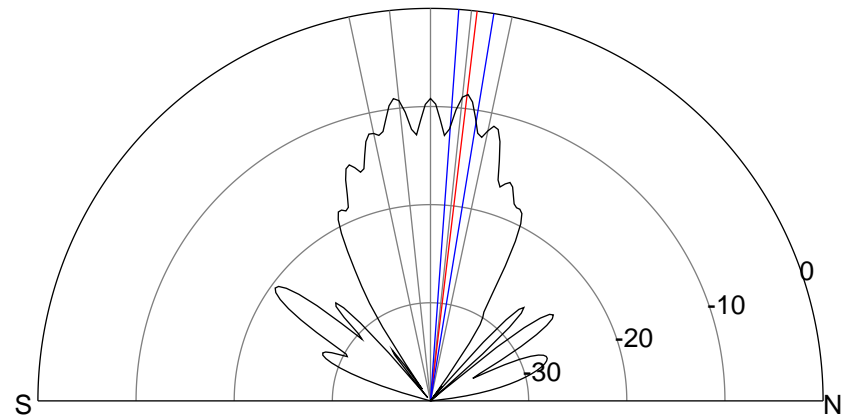
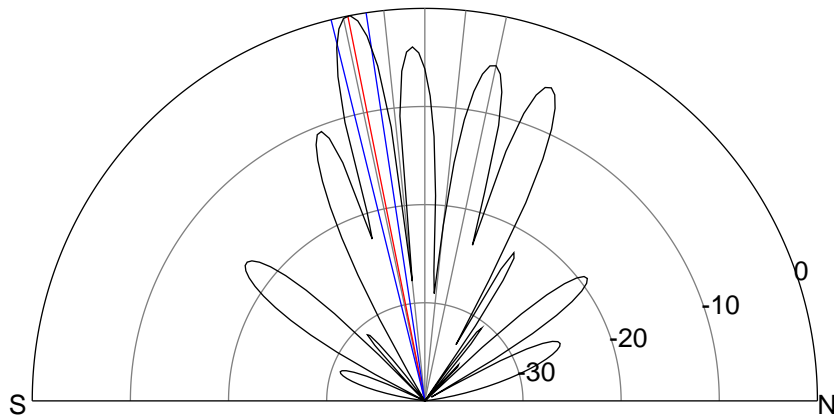
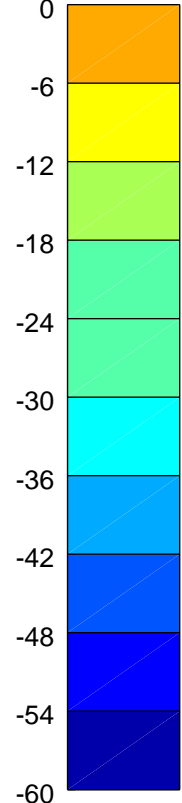
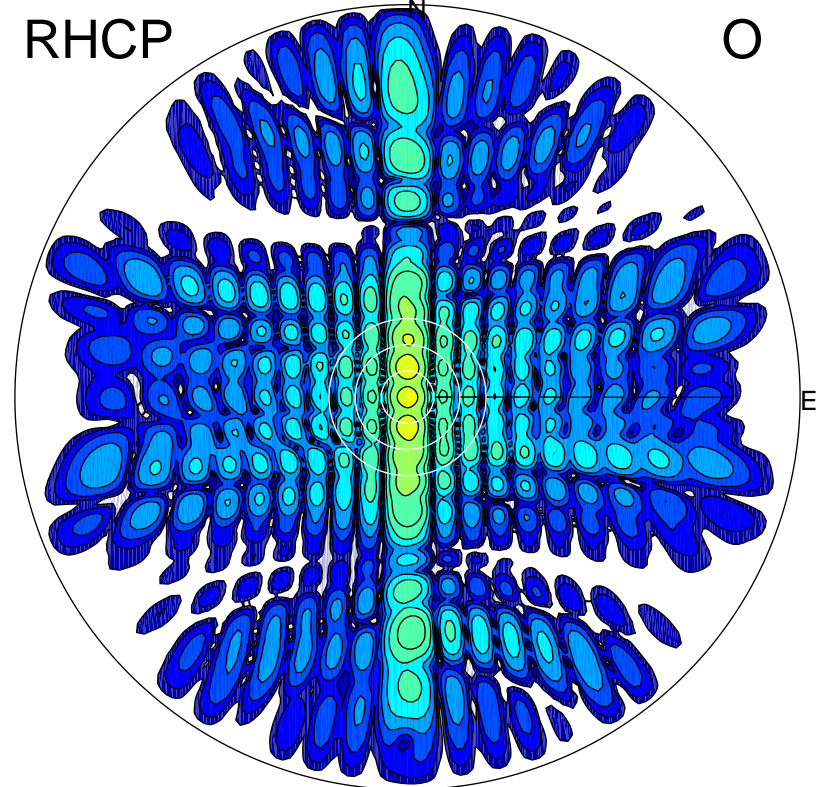
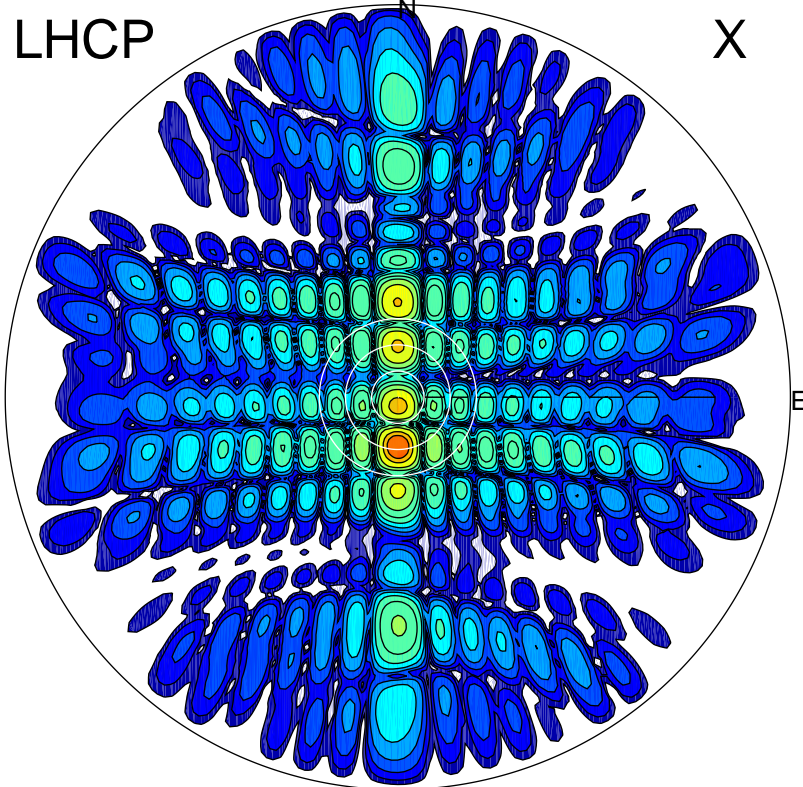


2015-10-28 13:47:02 A1 7.95300000 MHz 777.0 kW



ERP 392.3 MW

Peak gain 27.0 dBi at Az 180 Zen 11
RHCP gain 14.6 dBi
N-S peak 27.1 dBi at Zen -11.3
N-S -3 dB beamwidth 5.2 deg.

ERP 54.8 MW

Peak gain 18.5 dBi at Az 359 Zen 7
LHCP gain 11.5 dBi
N-S peak 18.5 dBi at Zen 6.8
N-S -3 dB beamwidth 5.2 deg.