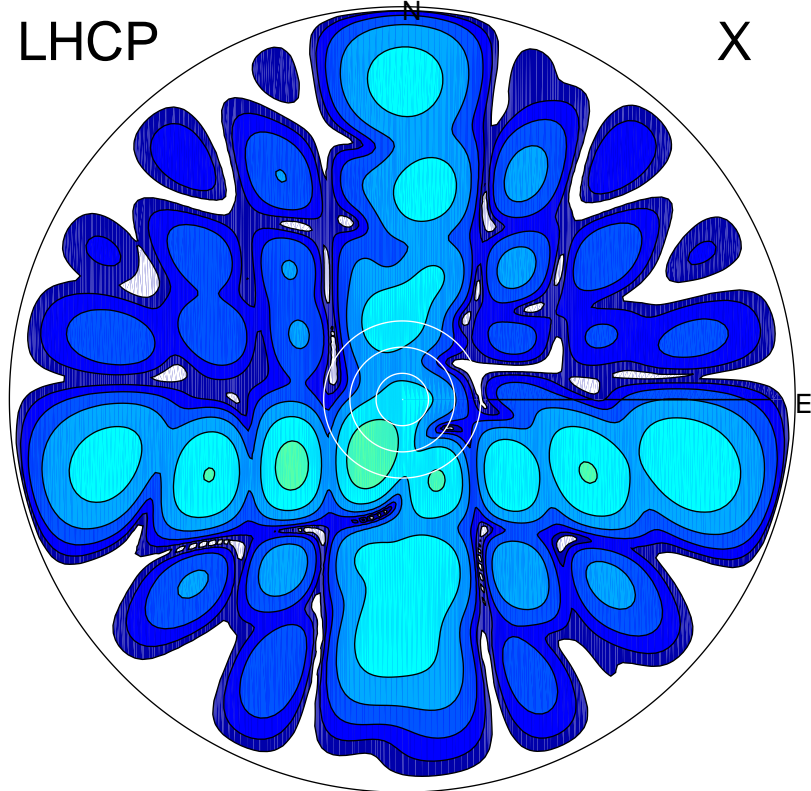


2015-10-27 09:21:56 A2 4.04000000 MHz 874.0 kW

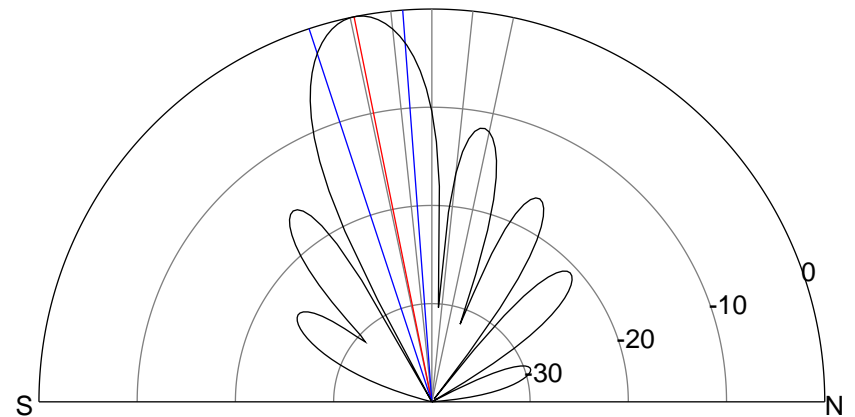
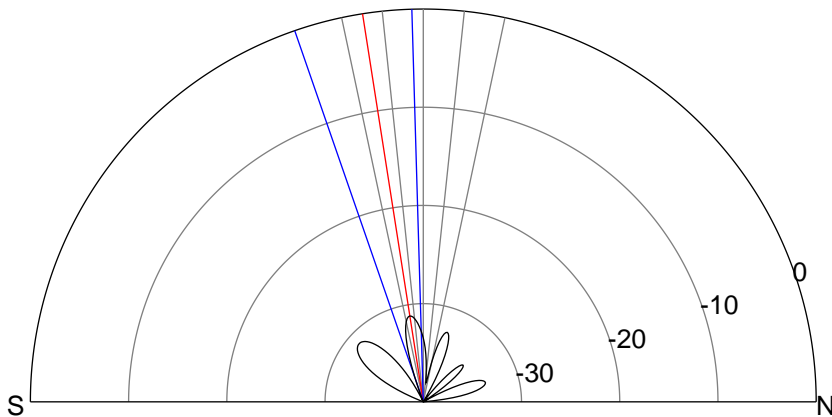
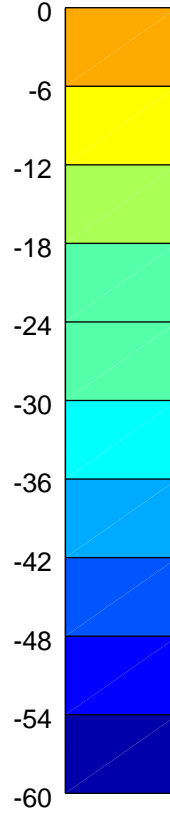
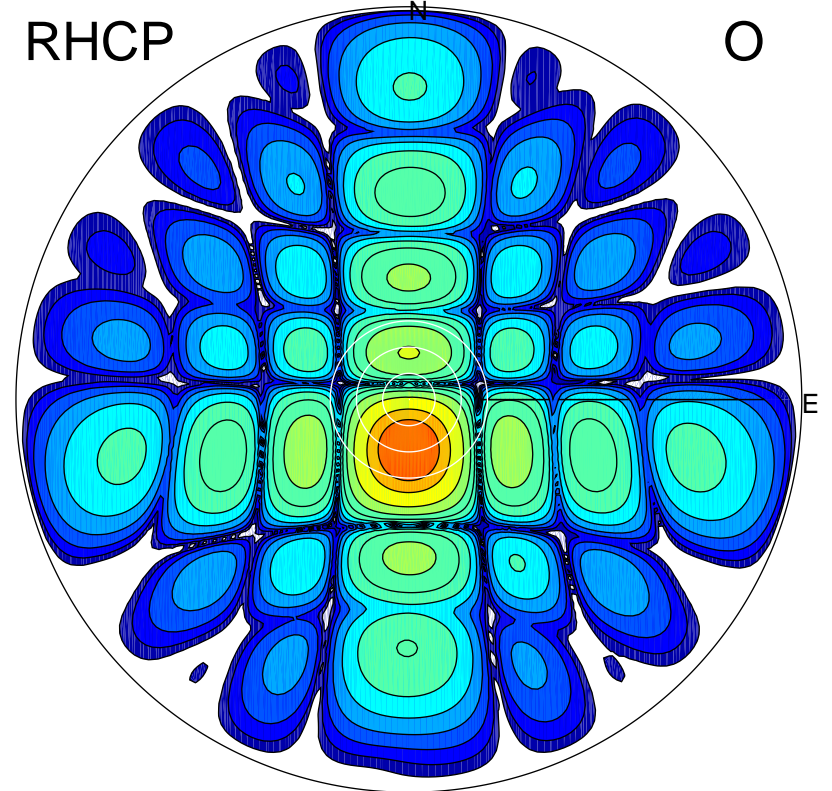
LHCP

X



RHCP

O



### ERP 0.4 MW

Peak gain -3.6 dBi at Az 209 Zen 15  
RHCP gain 19.0 dBi  
N-S peak -8.8 dBi at Zen -8.9  
N-S -3 dB beamwidth 17.4 deg.

### ERP 151.7 MW

Peak gain 22.4 dBi at Az 179 Zen 11  
LHCP gain -9.3 dBi  
N-S peak 22.4 dBi at Zen -11.4  
N-S -3 dB beamwidth 14.0 deg.