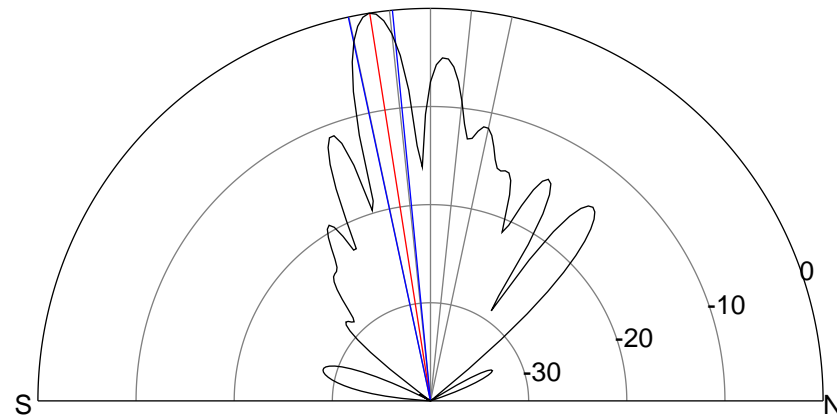
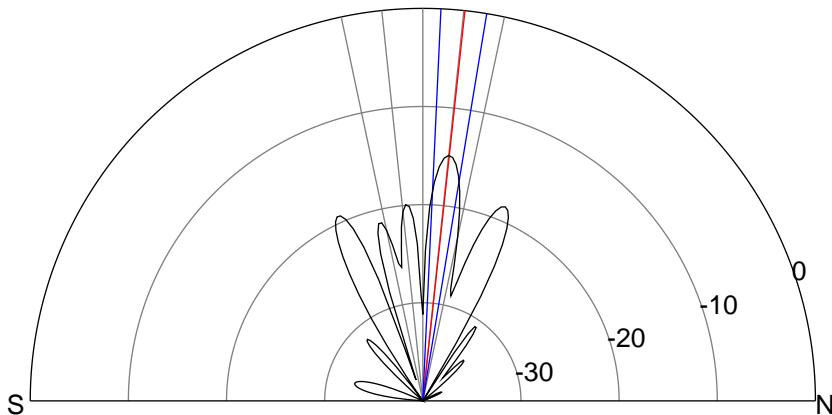
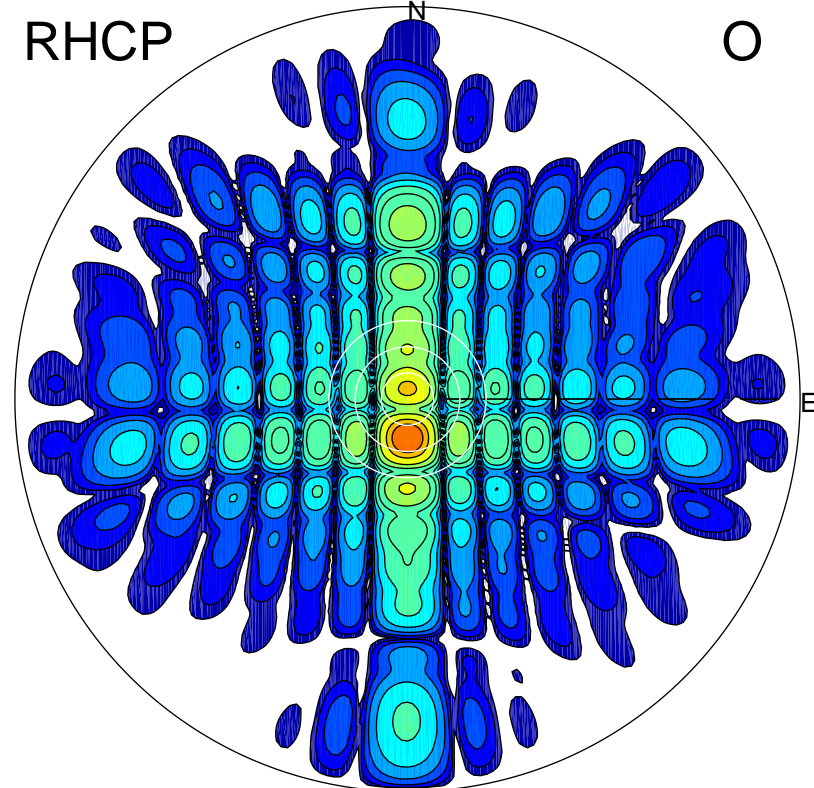
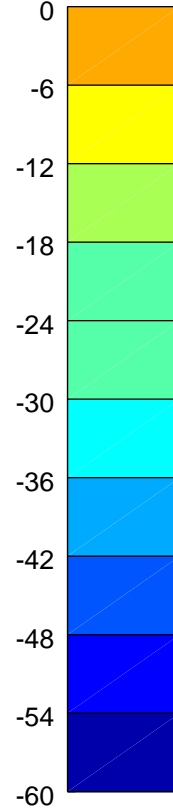
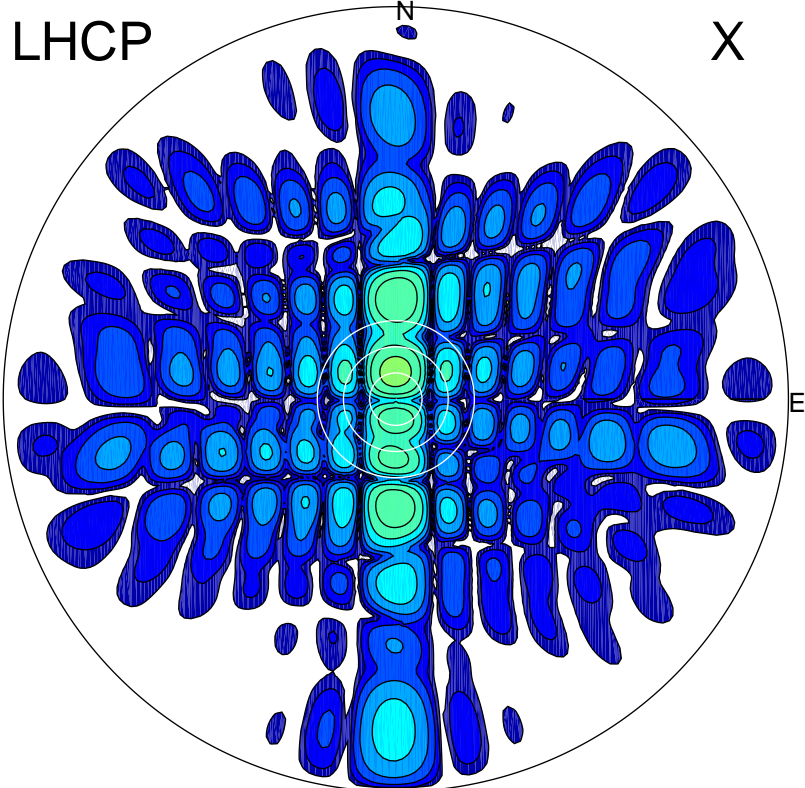


2015-10-26 10:00:05 A1 5.60000000 MHz 721.0 kW



### ERP 11.5 MW

Peak gain 12.0 dBi at Az 0 Zen 6  
RHCP gain 17.6 dBi  
N-S peak 12.0 dBi at Zen 6.2  
N-S -3 dB beamwidth 6.7 deg.

### ERP 352.1 MW

Peak gain 26.9 dBi at Az 179 Zen 9  
LHCP gain 0.6 dBi  
N-S peak 26.9 dBi at Zen -8.9  
N-S -3 dB beamwidth 6.5 deg.