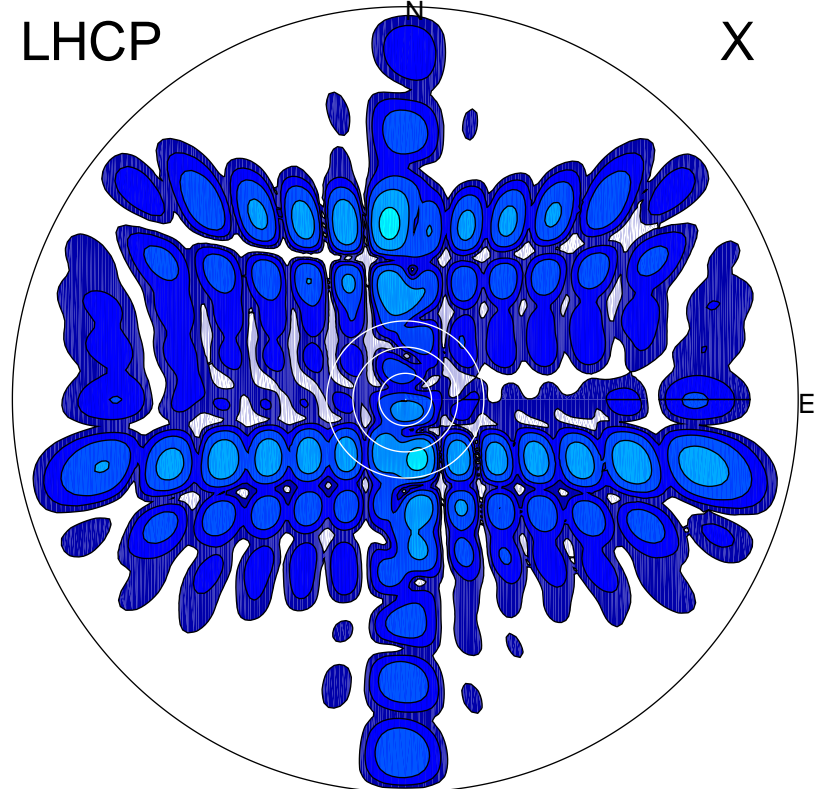


2015-10-26 09:43:51 A1 5.42300000 MHz 772.0 kW

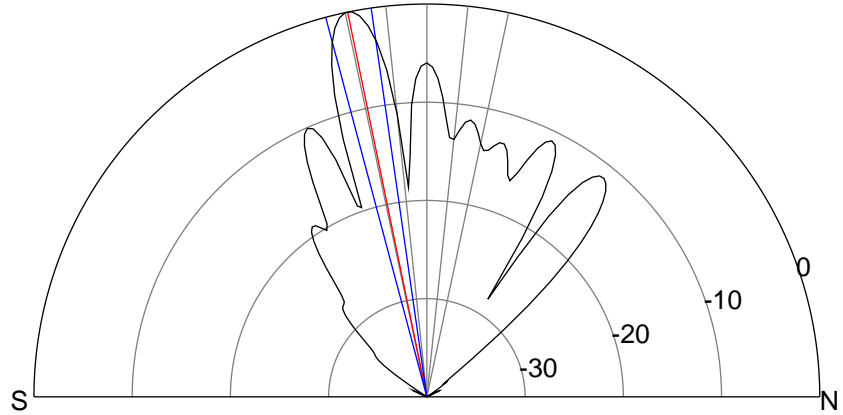
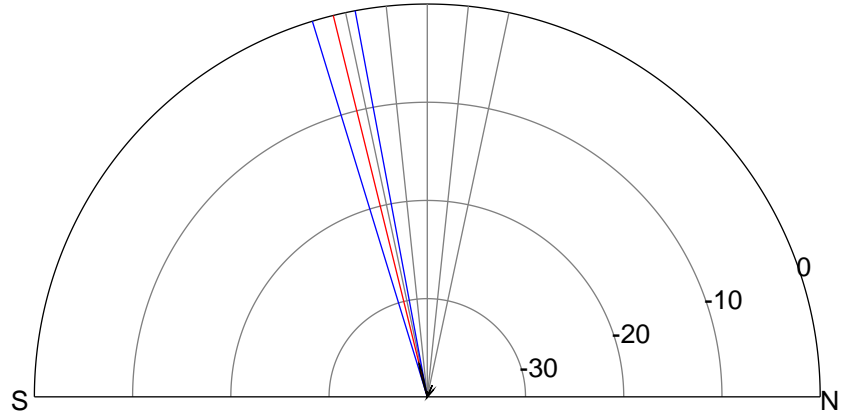
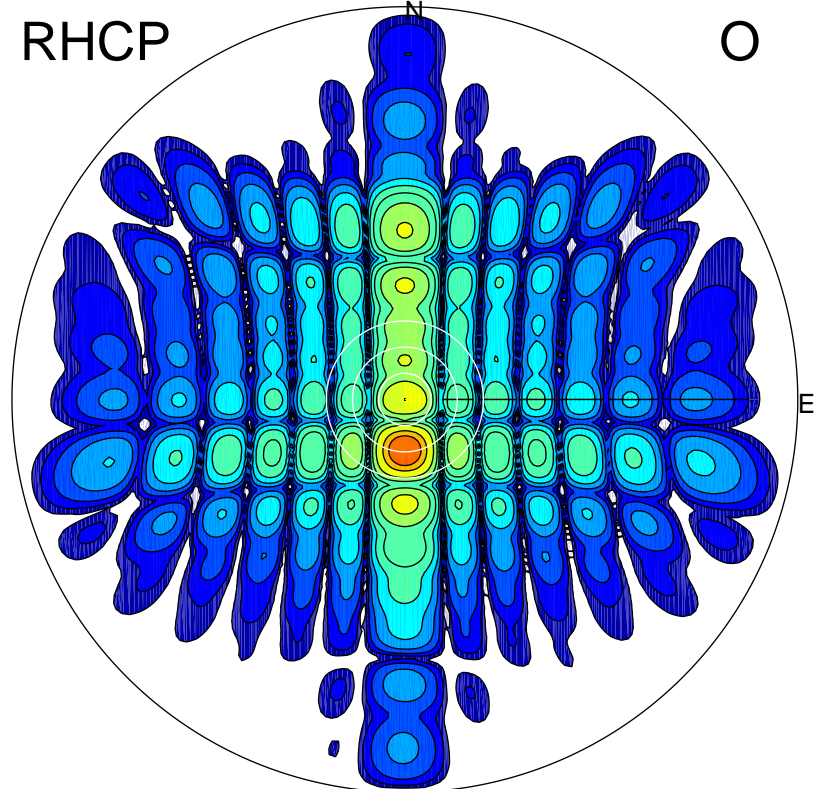
LHCP

X



RHCP

O



ERP 0.1 MW

Peak gain -7.2 dBi at Az 167 Zen 14
RHCP gain 23.6 dBi
N-S peak -9.8 dBi at Zen -13.8
N-S -3 dB beamwidth 6.4 deg.

ERP 358.3 MW

Peak gain 26.7 dBi at Az 181 Zen 12
LHCP gain -11.1 dBi
N-S peak 26.7 dBi at Zen -11.6
N-S -3 dB beamwidth 6.8 deg.