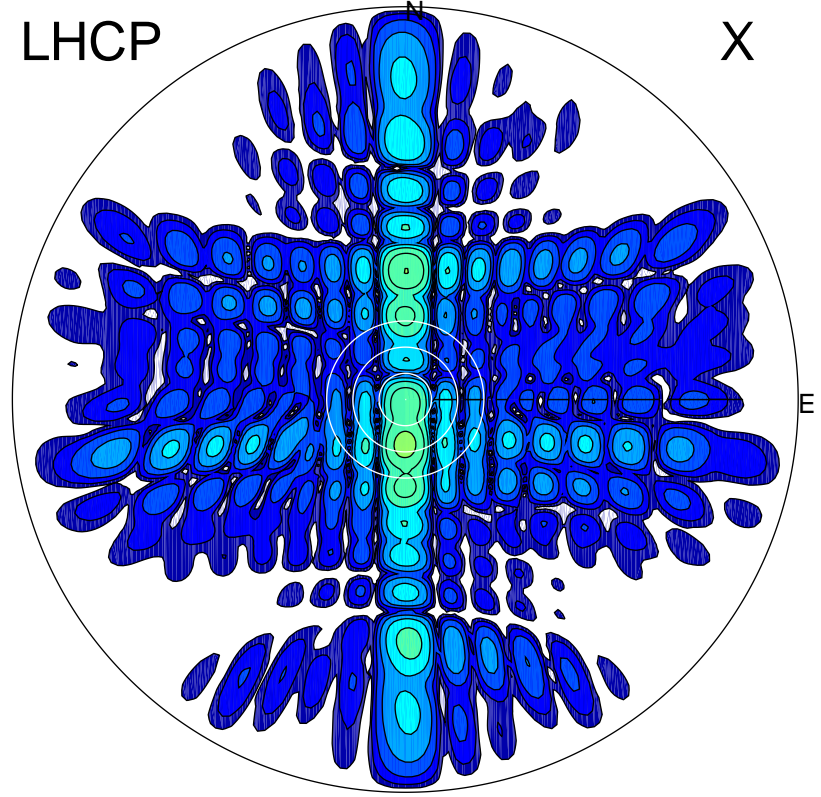


2015-10-25 10:00:05 A1 7.00000000 MHz 772.0 kW

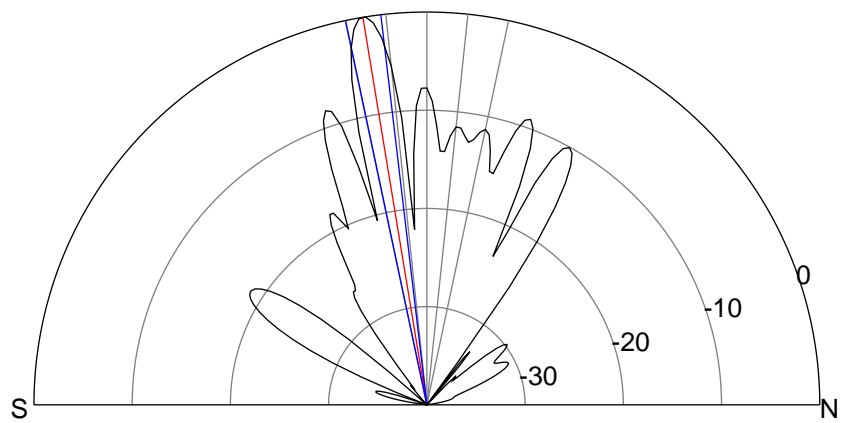
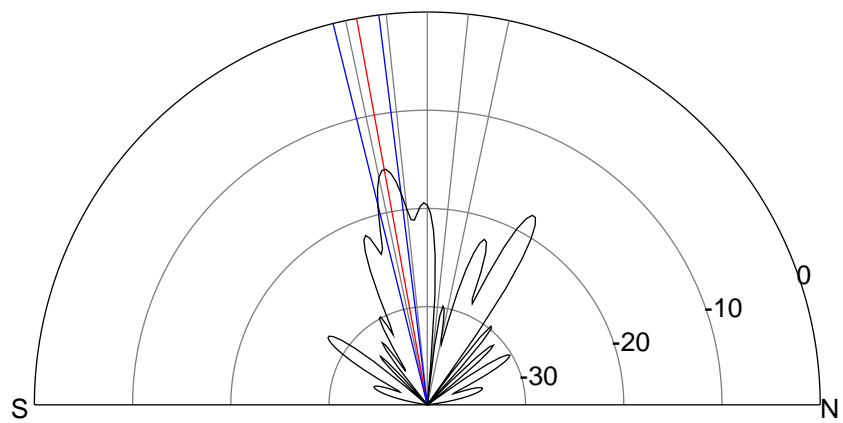
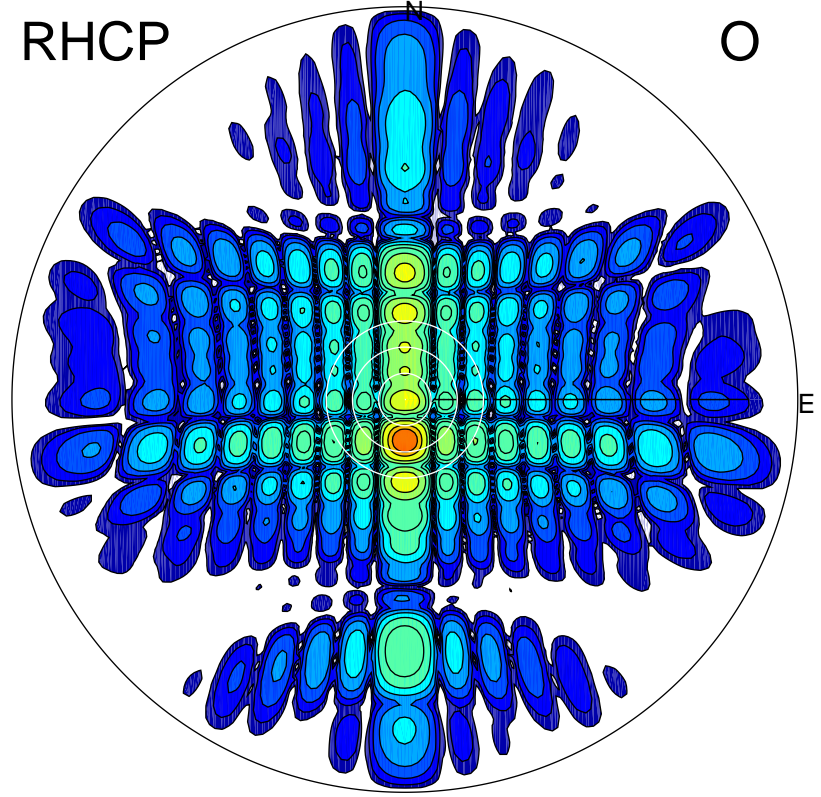
LHCP

X



RHCP

O



### ERP 14.6 MW

Peak gain 12.8 dBi at Az 180 Zen 10  
RHCP gain 28.3 dBi  
N-S peak 12.8 dBi at Zen -10.4  
N-S -3 dB beamwidth 6.8 deg.

### ERP 535.2 MW

Peak gain 28.4 dBi at Az 179 Zen 9  
LHCP gain 12.3 dBi  
N-S peak 28.5 dBi at Zen -9.4  
N-S -3 dB beamwidth 5.2 deg.