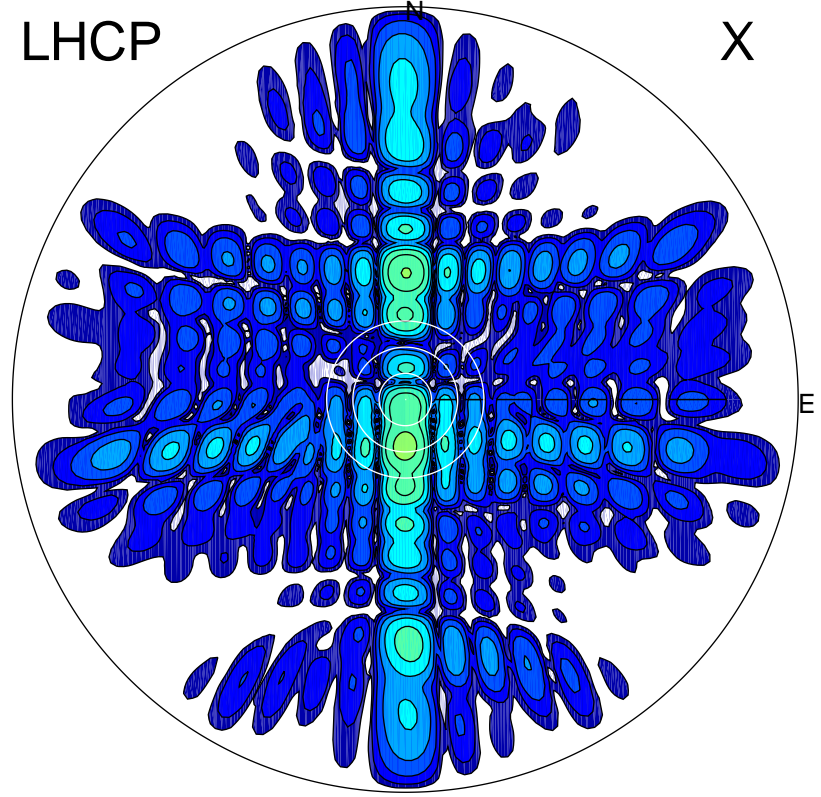


2015-10-23 12:30:05 A1 7.00000000 MHz 782.0 kW

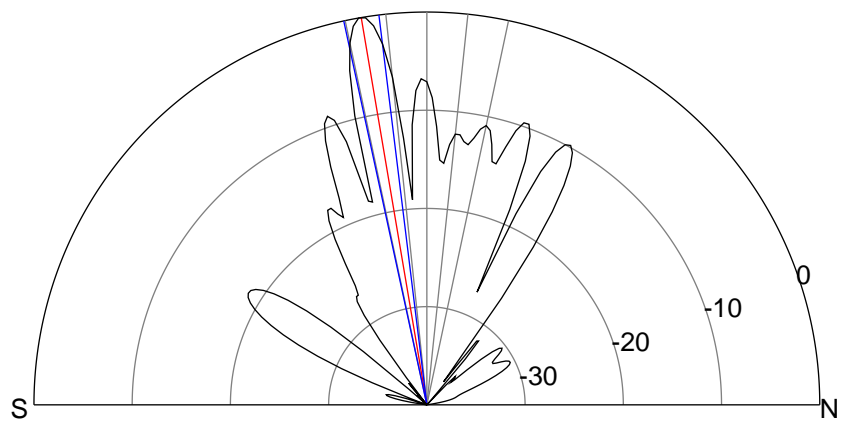
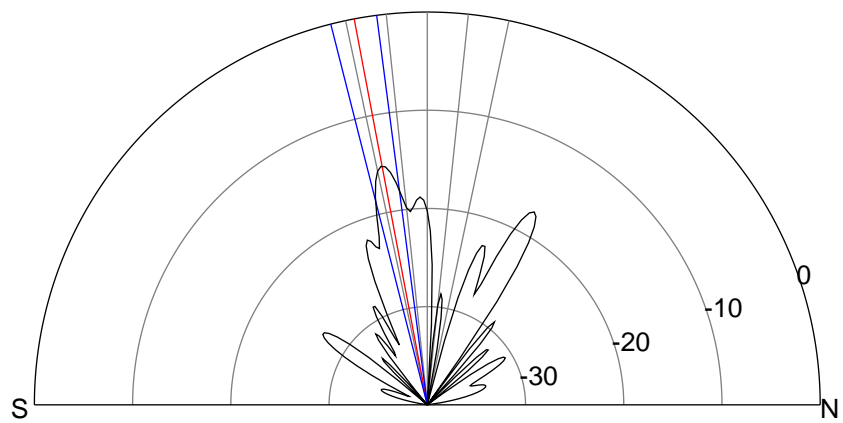
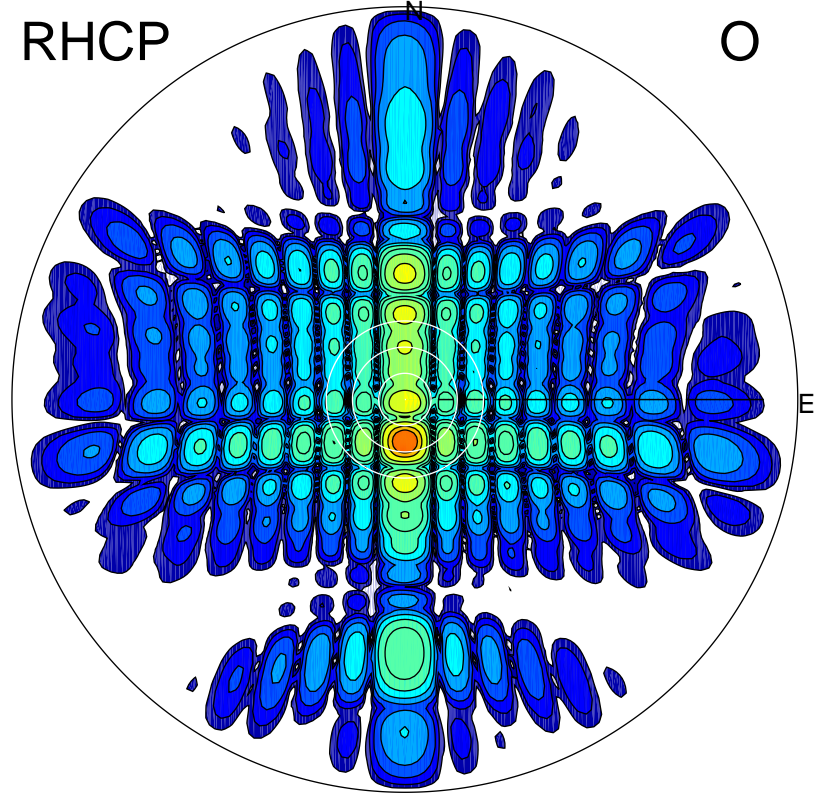
LHCP

X



RHCP

O



### ERP 16.0 MW

Peak gain 13.1 dBi at Az 180 Zen 11  
RHCP gain 27.7 dBi  
N-S peak 13.1 dBi at Zen -10.7  
N-S -3 dB beamwidth 6.8 deg.

### ERP 538.5 MW

Peak gain 28.4 dBi at Az 180 Zen 10  
LHCP gain 13.0 dBi  
N-S peak 28.4 dBi at Zen -9.6  
N-S -3 dB beamwidth 5.2 deg.