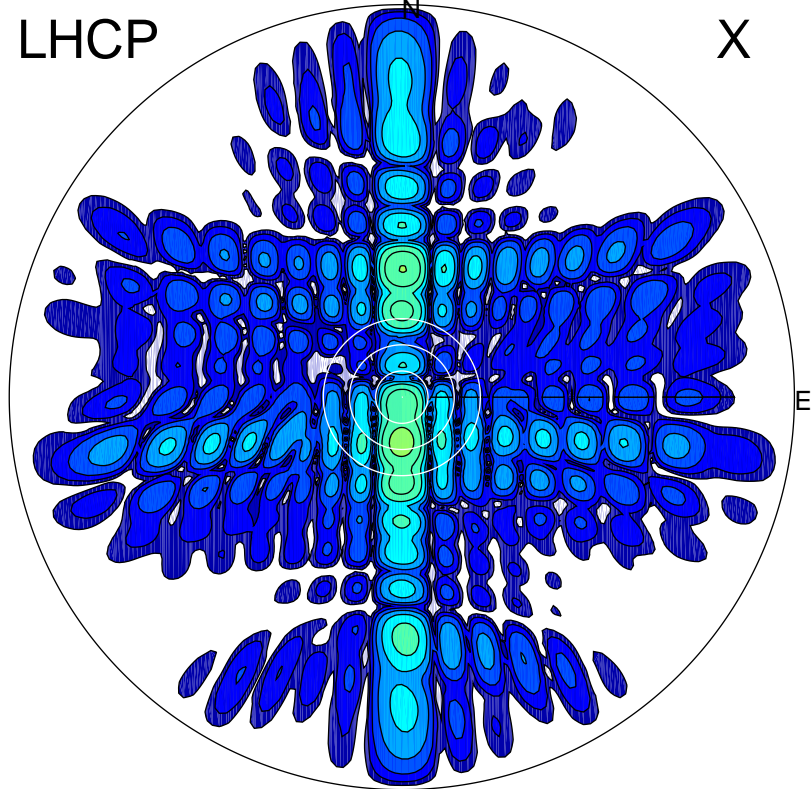


2015-10-23 11:30:05 A1 7.00000000 MHz 780.0 kW

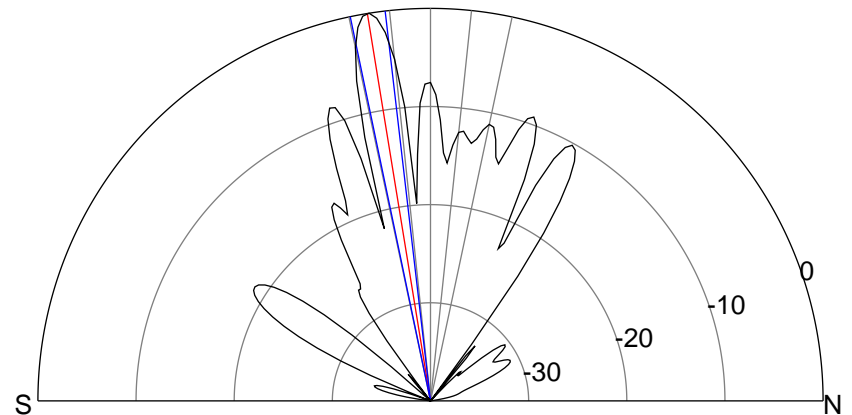
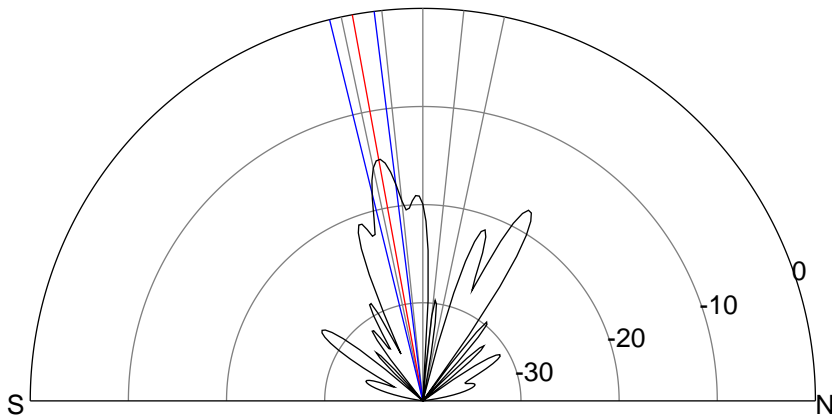
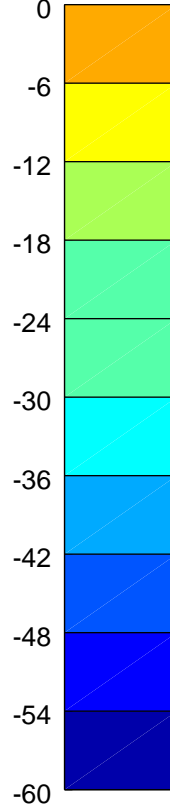
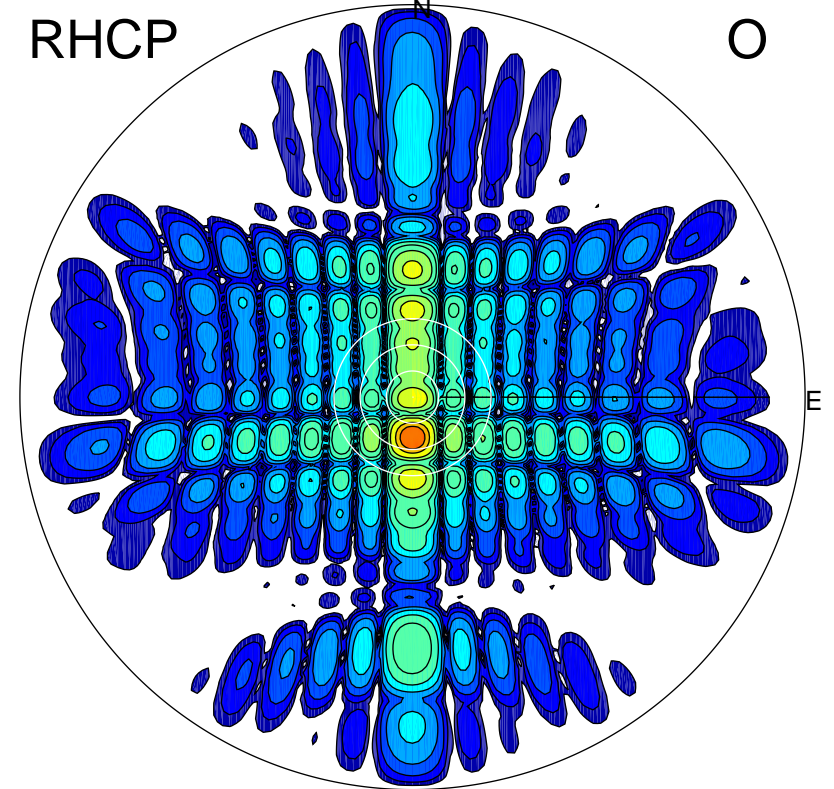
LHCP

X



RHCP

O



ERP 17.2 MW

Peak gain 13.4 dBi at Az 180 Zen 10
RHCP gain 28.2 dBi
N-S peak 13.5 dBi at Zen -10.4
N-S -3 dB beamwidth 6.6 deg.

ERP 544.9 MW

Peak gain 28.4 dBi at Az 180 Zen 9
LHCP gain 13.0 dBi
N-S peak 28.5 dBi at Zen -9.3
N-S -3 dB beamwidth 5.2 deg.