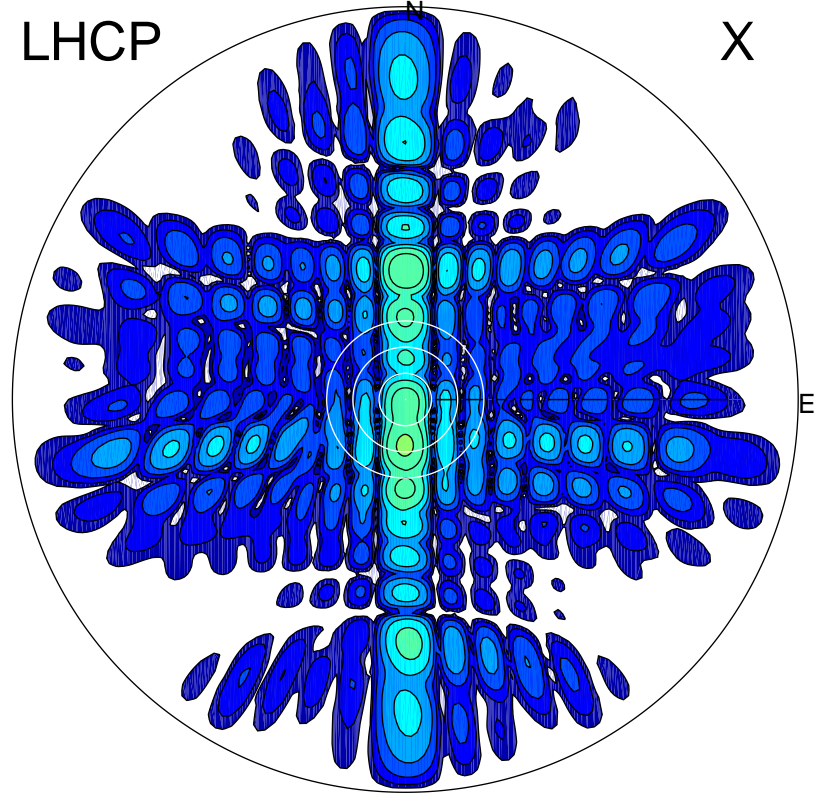


2015-10-23 11:00:05 A1 7.00000000 MHz 802.0 kW

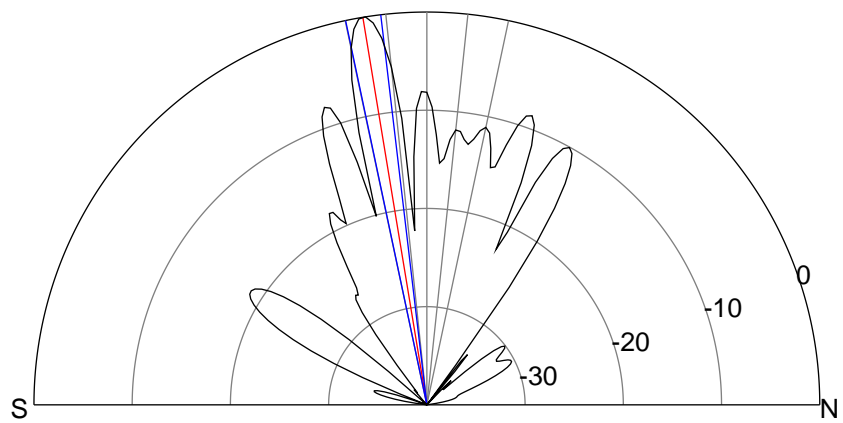
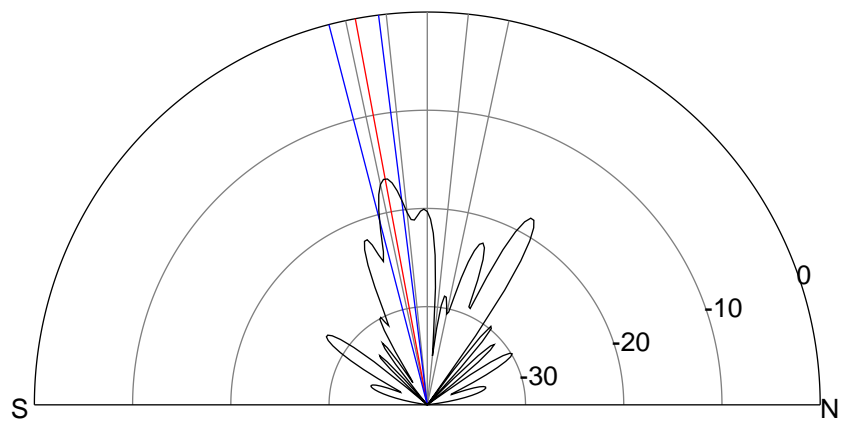
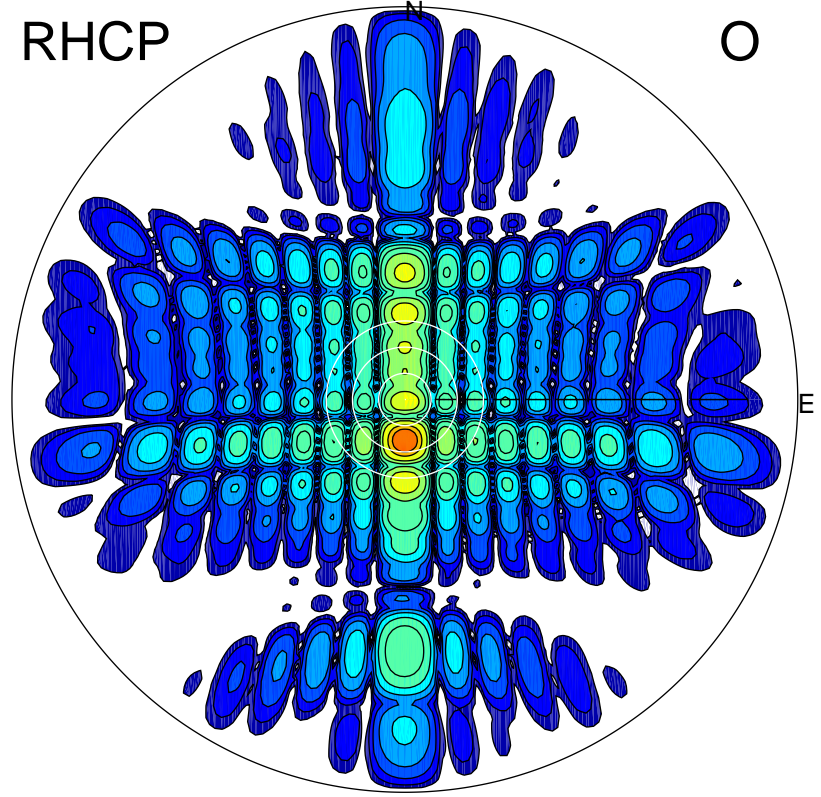
LHCP

X



RHCP

O



ERP 12.1 MW

Peak gain 11.8 dBi at Az 181 Zen 11
RHCP gain 27.4 dBi
N-S peak 11.8 dBi at Zen -10.6
N-S -3 dB beamwidth 7.4 deg.

ERP 556.3 MW

Peak gain 28.4 dBi at Az 180 Zen 9
LHCP gain 11.3 dBi
N-S peak 28.5 dBi at Zen -9.4
N-S -3 dB beamwidth 5.2 deg.