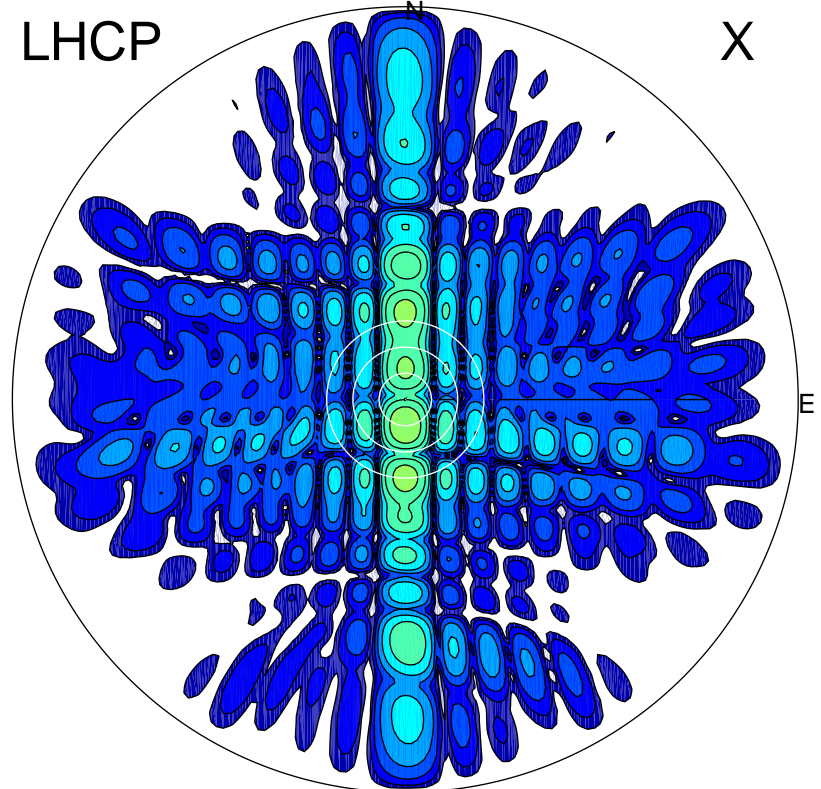


2015-10-23 10:00:05 A1 7.00000000 MHz 724.0 kW

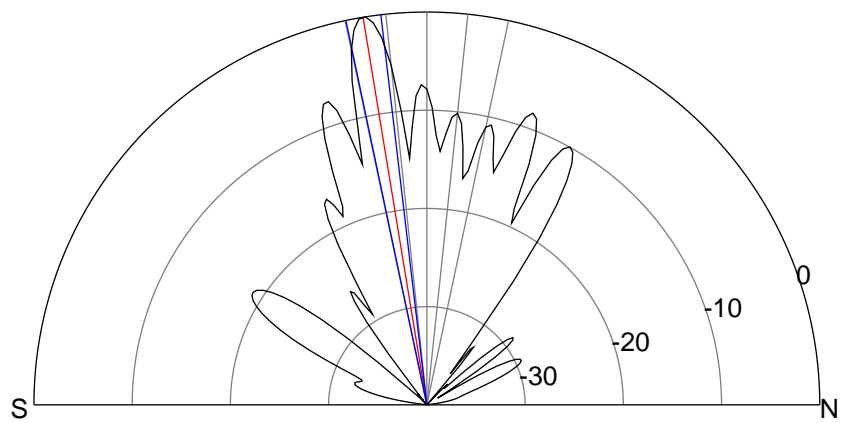
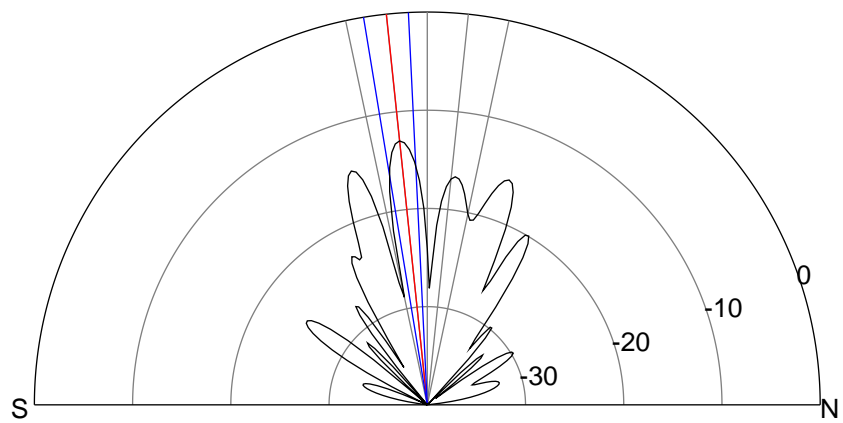
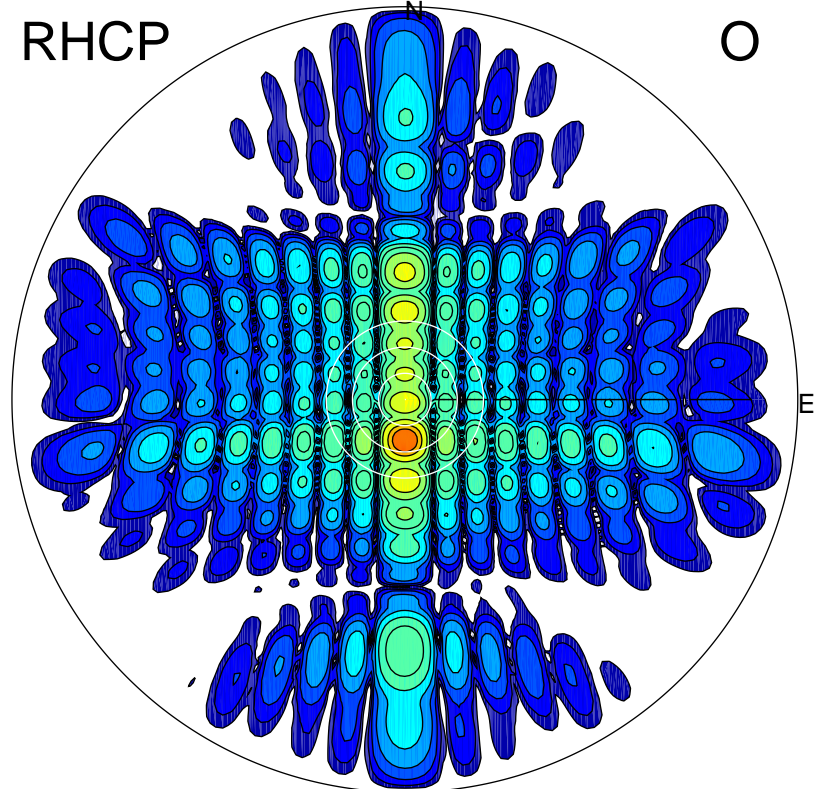
LHCP

X



RHCP

O



### ERP 22.8 MW

Peak gain 15.0 dBi at Az 180 Zen 6  
RHCP gain 22.7 dBi  
N-S peak 15.0 dBi at Zen -6.0  
N-S -3 dB beamwidth 6.6 deg.

### ERP 453.1 MW

Peak gain 28.0 dBi at Az 180 Zen 9  
LHCP gain 12.4 dBi  
N-S peak 28.0 dBi at Zen -9.3  
N-S -3 dB beamwidth 5.2 deg.