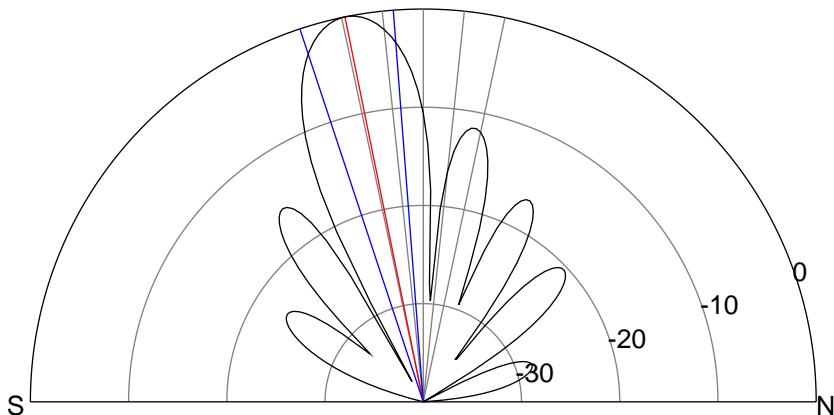
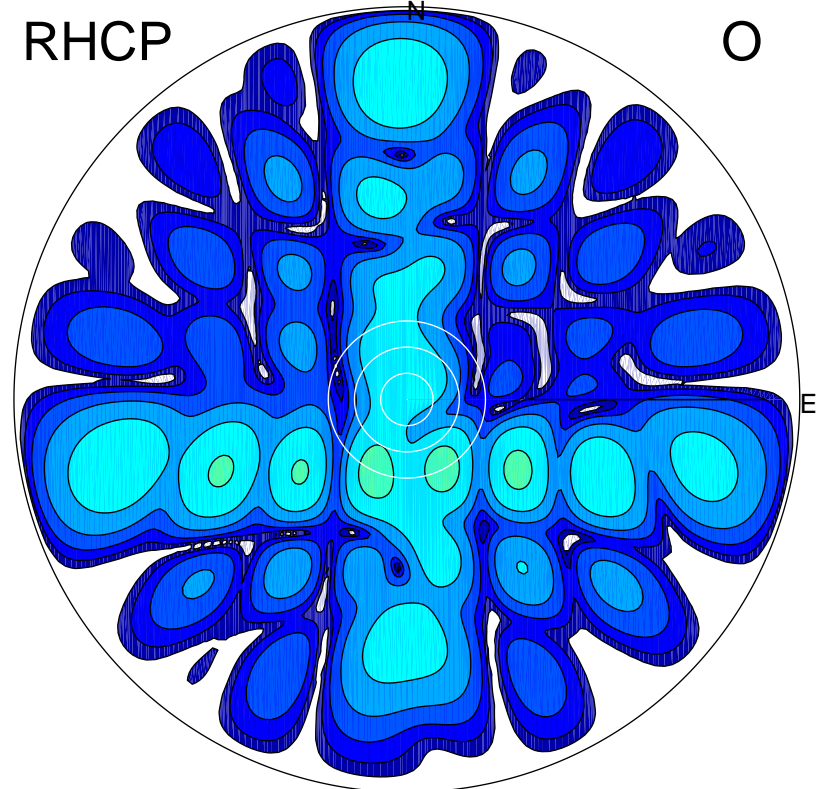
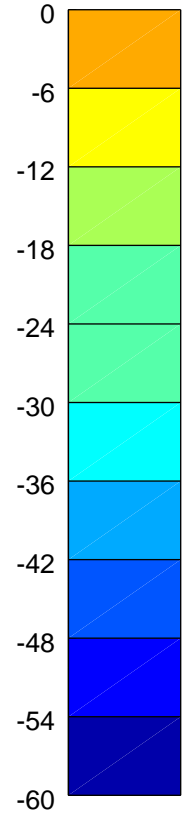
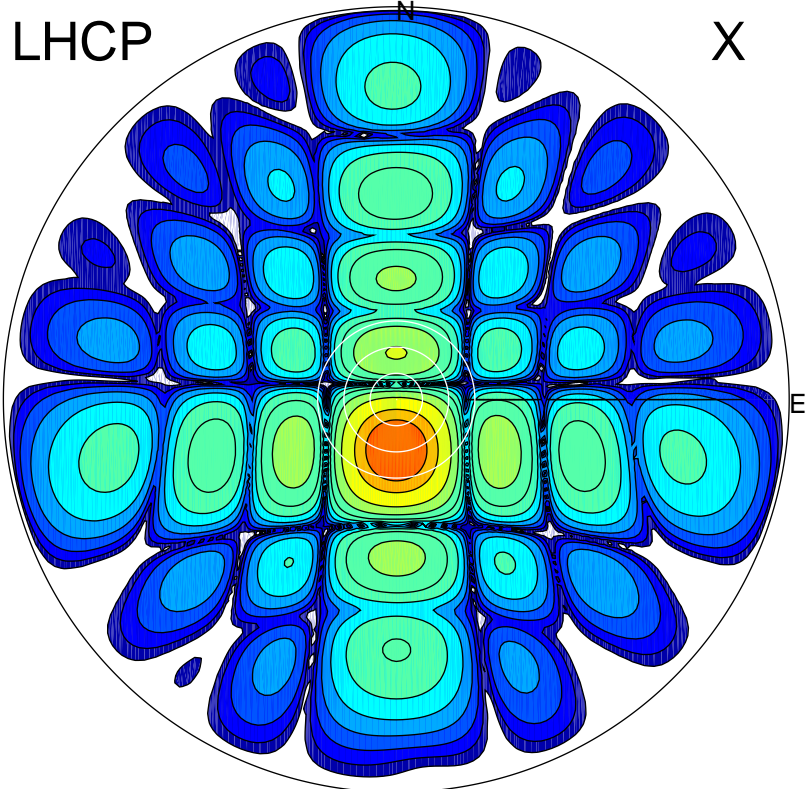
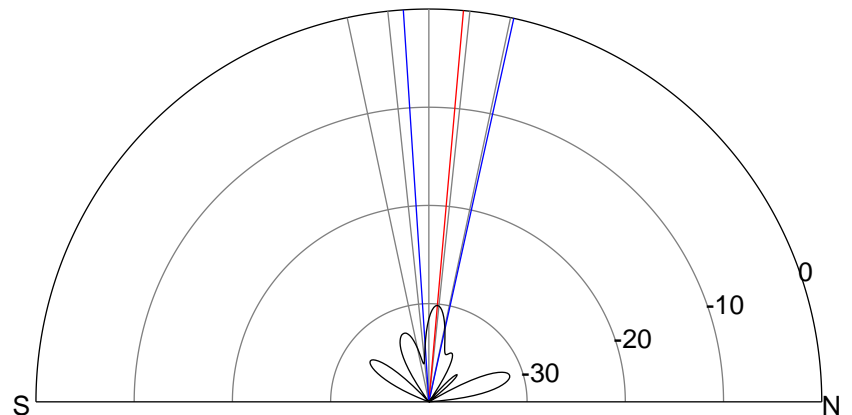


2015-10-14 15:24:55 A2 4.04000000 MHz 833.0 kW



ERP 144.6 MW

Peak gain 22.4 dBi at Az 180 Zen 11
RHCP gain -12.5 dBi
N-S peak 22.4 dBi at Zen -11.5
N-S -3 dB beamwidth 13.9 deg.



ERP 0.2 MW

Peak gain -5.5 dBi at Az 153 Zen 18
LHCP gain 17.1 dBi
N-S peak -7.8 dBi at Zen 5.1
N-S -3 dB beamwidth 16.2 deg.