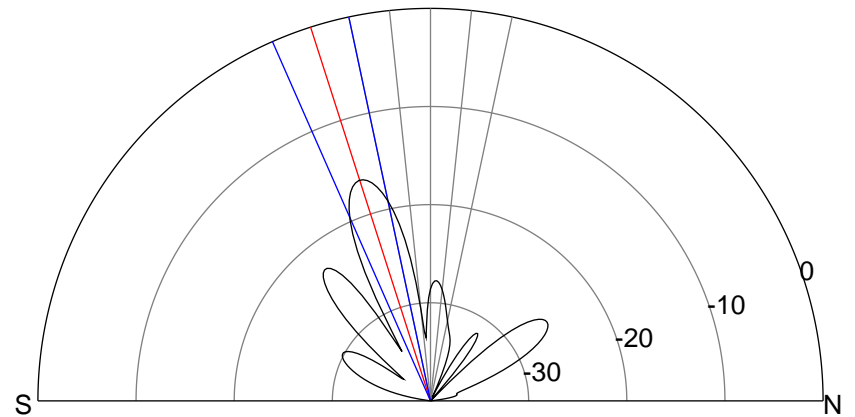
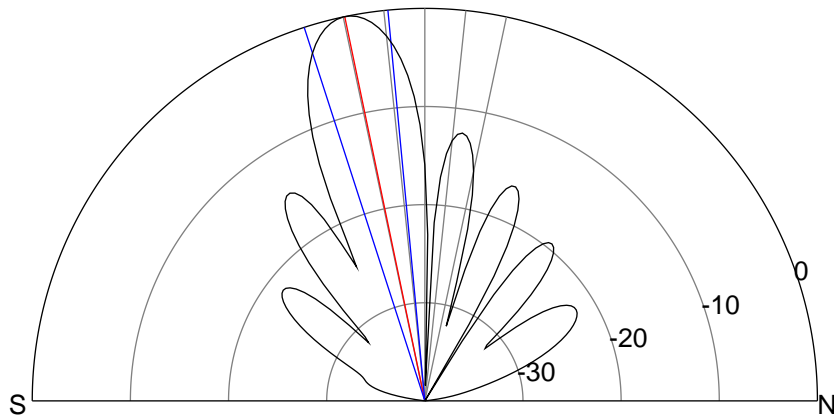
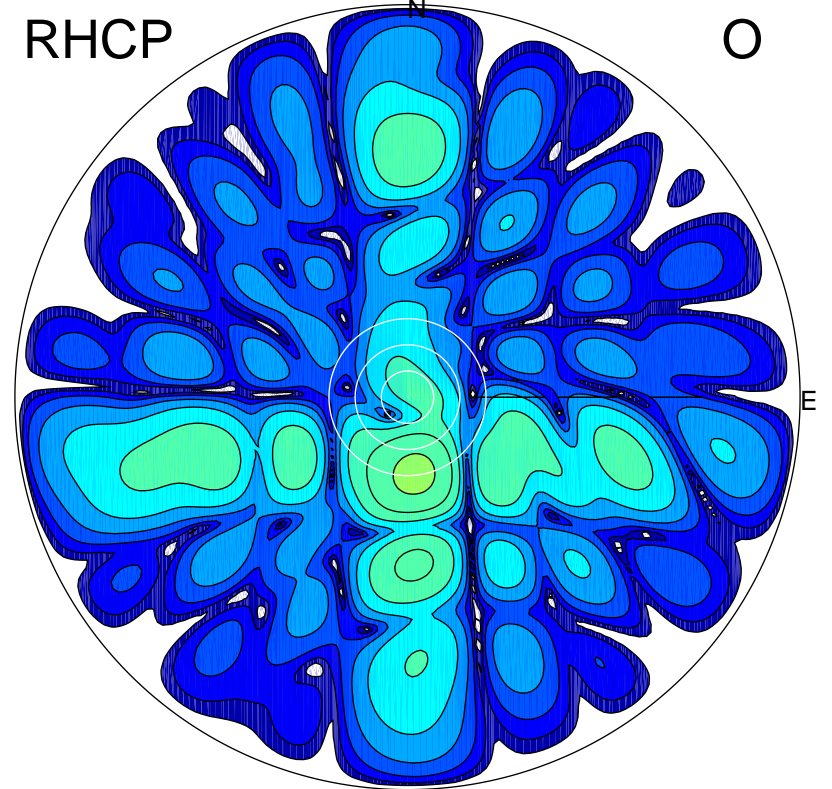
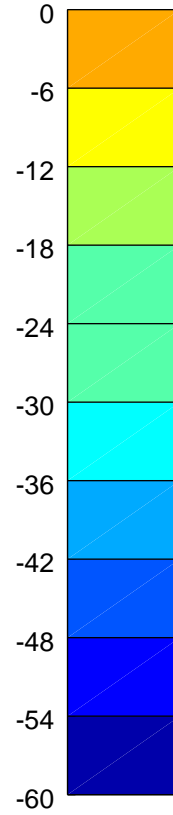
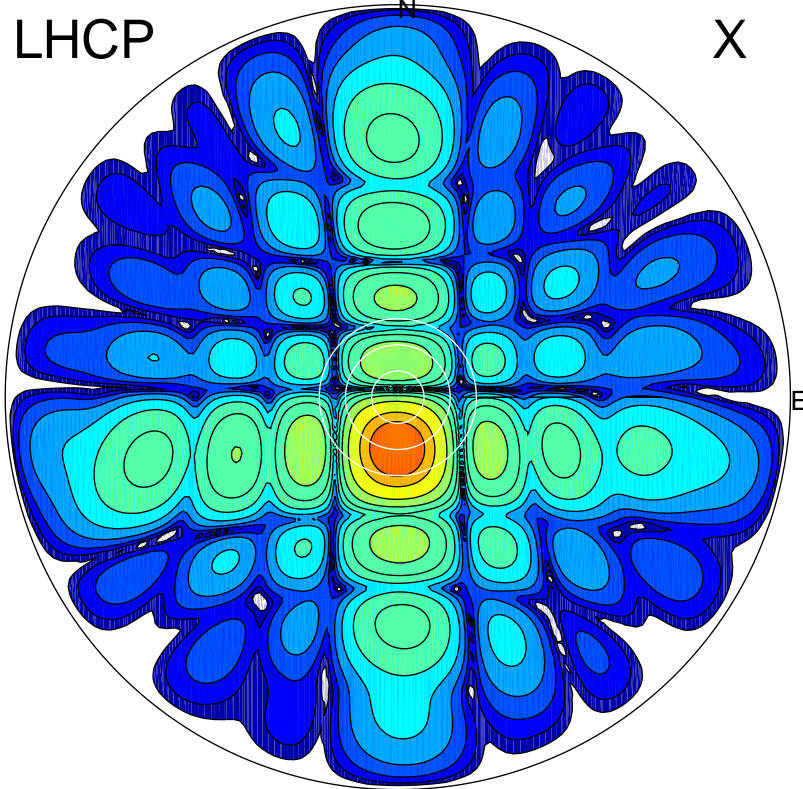


2015-10-14 15:17:00 A2 4.54400000 MHz 887.0 kW



ERP 181.9 MW

Peak gain 23.1 dBi at Az 182 Zen 12
RHCP gain 3.8 dBi
N-S peak 23.1 dBi at Zen -11.8
N-S -3 dB beamwidth 12.5 deg.

ERP 4.4 MW

Peak gain 7.0 dBi at Az 174 Zen 18
LHCP gain 20.1 dBi
N-S peak 6.7 dBi at Zen -17.8
N-S -3 dB beamwidth 11.7 deg.