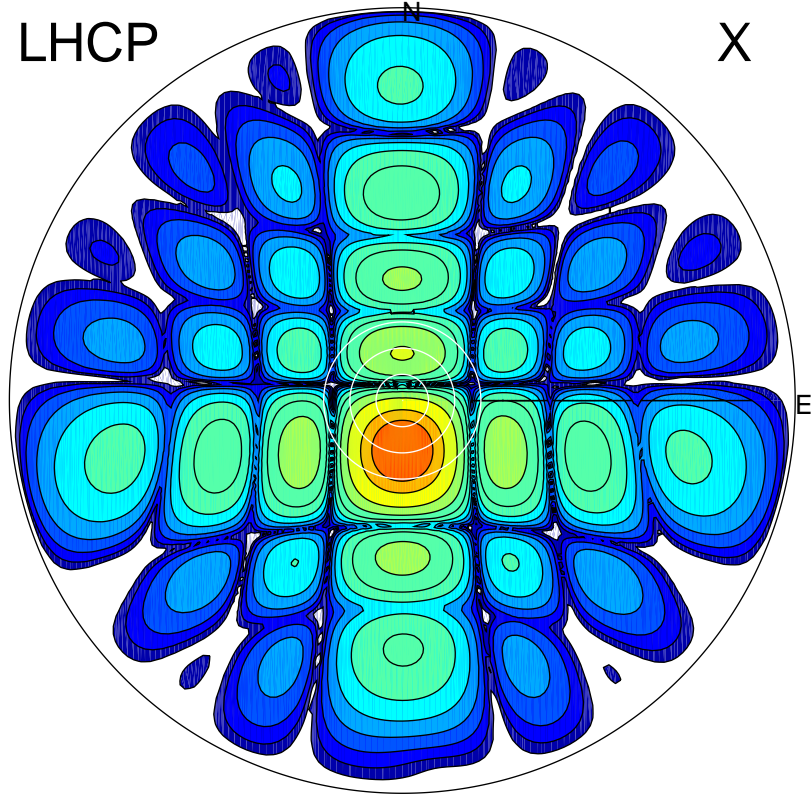
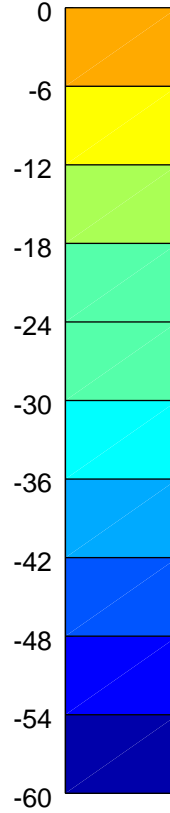


2015-10-13 15:17:00 A2 4.04000000 MHz 854.0 kW

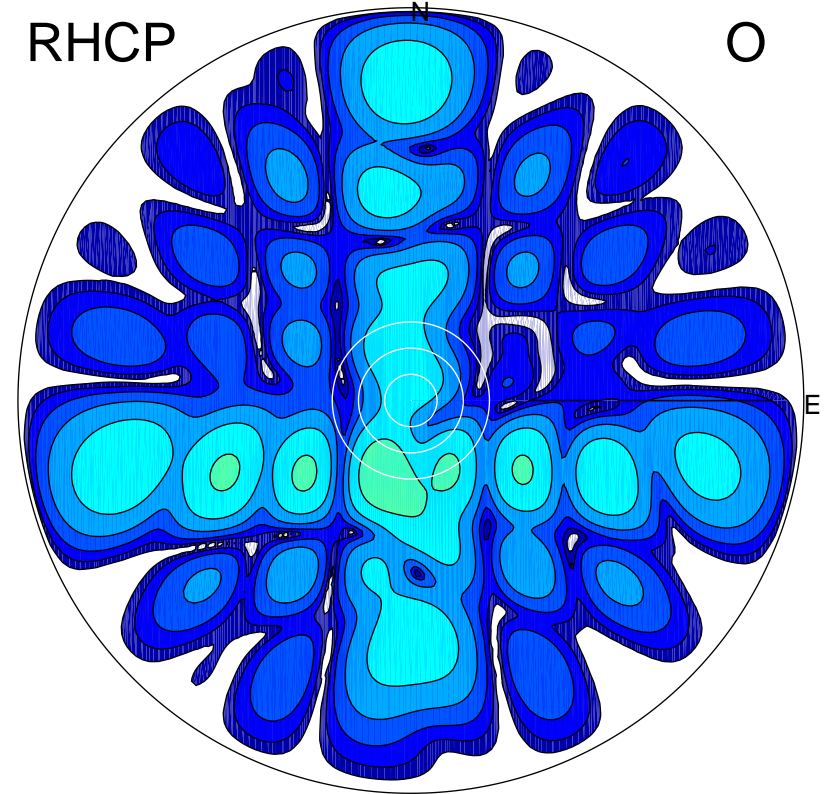
LHCP



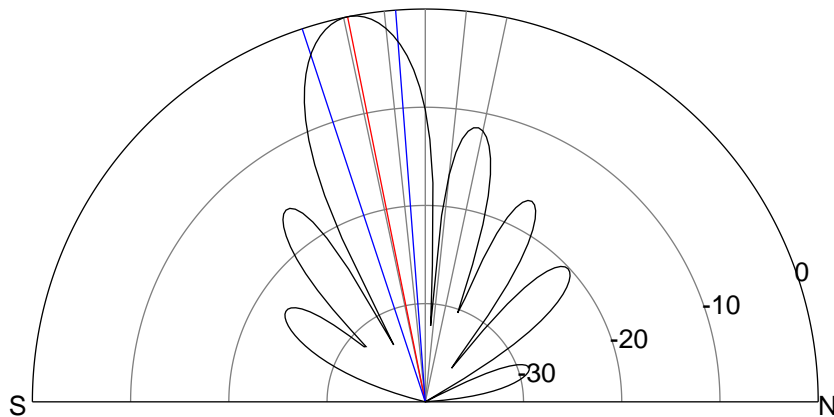
X



RHCP

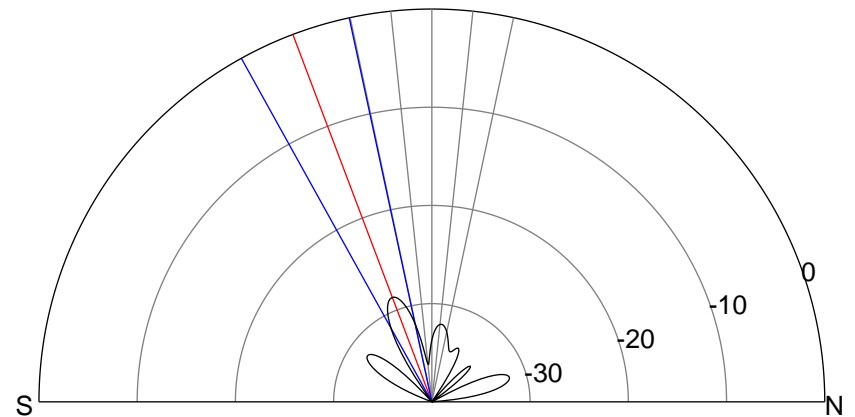


O



ERP 148.3 MW

Peak gain 22.4 dBi at Az 179 Zen 11
RHCP gain -10.6 dBi
N-S peak 22.4 dBi at Zen -11.4
N-S -3 dB beamwidth 13.9 deg.



ERP 0.4 MW

Peak gain -3.4 dBi at Az 200 Zen 18
LHCP gain 18.4 dBi
N-S peak -6.2 dBi at Zen -20.7
N-S -3 dB beamwidth 16.9 deg.